



Hydrologic Briefing Tropical Storm Harvey

4:30 AM CDT
Tuesday, August 29, 2017

Prepared by:
Lara Beal

Situation Overview

Tropical Storm Harvey



Corpus Christi
WEATHER FORECAST OFFICE

- T.S. Harvey is moving slowly east along the Upper Texas Coast, and will remain east of the Port O'Connor area. Northwesterly wind gusts 30 to 40 mph will still be possible across the Coastal Bend, with the highest gusts near Port O'Connor.
- Tropical Storm Warning remains in effect from Mesquite Bay to Intracoastal City.
- The heavy rainfall threat will remain to the east of South Texas.
- Still Forecasting Major Flooding on Guadalupe River.

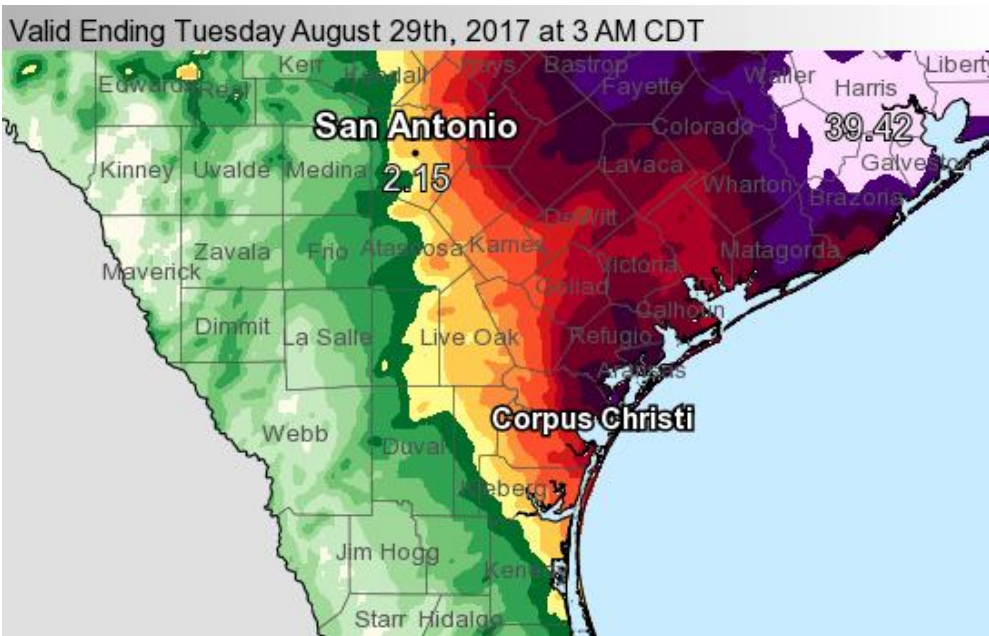
Event Total so far...



Corpus Christi

WEATHER FORECAST OFFICE

Tropical Storm Harvey



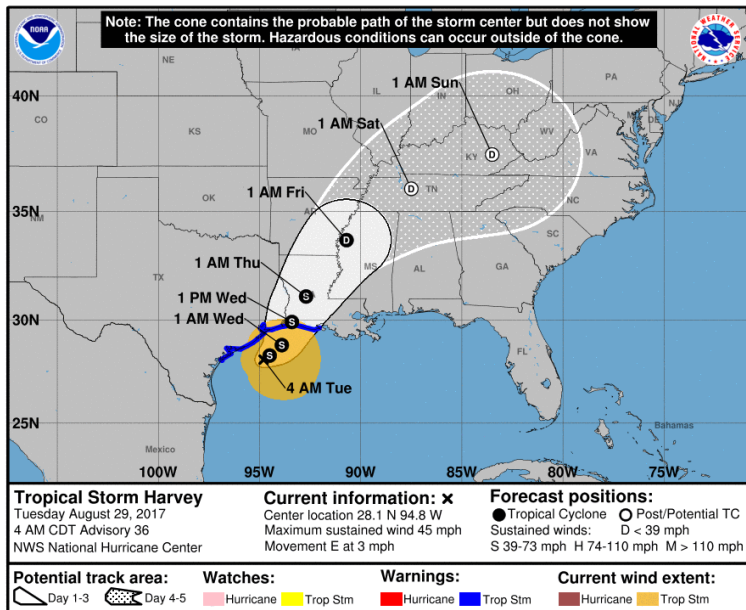
- Up to 0.1 inch
- 0.1 to 0.25 inches
- 0.25 to 0.5 inches
- 0.5 to 1.0 inches
- 1.0 to 1.5 inches
- 1.5 to 2.0 inches
- 2.0 to 3.0 inches
- 3.0 to 4.0 inches
- 4.0 to 6.0 inches
- 6.0 to 8.0 inches
- 8.0 to 10.0 inches
- 10.0 to 15.0 inches
- 15.0 to 20.0 inches
- 20.0 to 30.0 inches
- Greater than 30 inches

Situation Overview

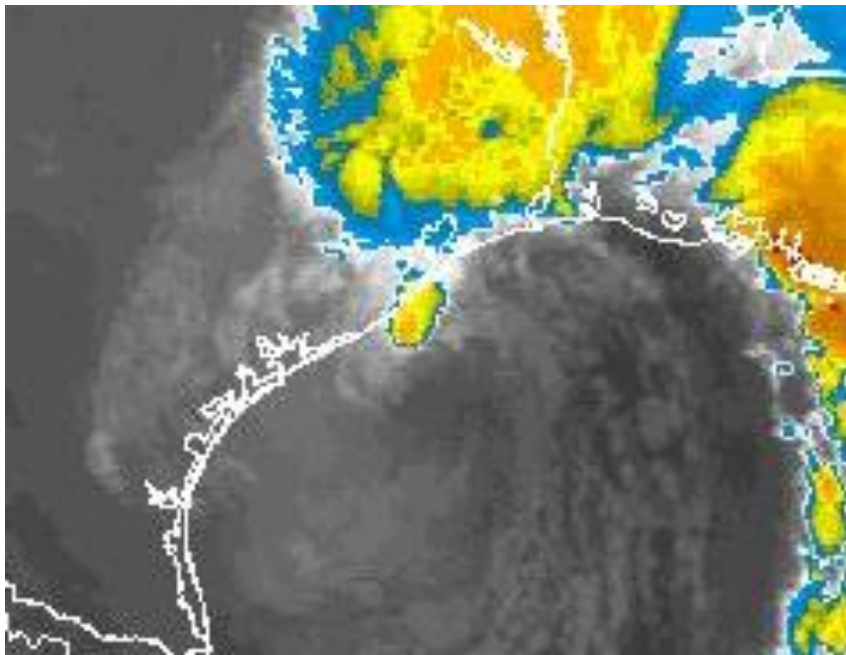


Corpus Christi
WEATHER FORECAST OFFICE

Tropical Storm Harvey



- Harvey is over the Gulf of Mexico and is expected to move further east before turning northeast later today
- Harvey is expected to make a second landfall over the northwestern Gulf coast on Wednesday.
- Tropical storm warnings continue across from Mesquite Bay eastward to Intracoastal City.



- Mostly cloudy skies today becoming partly cloudy this evening. High temperatures in the lower 80s across the northern Coastal Bend, to the upper 80s across the southern Coastal Bend.
- Best chances for isolated to scattered rain showers east of a Goliad to Rockport line.
- Strongest northwest to west winds gusting 30-40 mph around Port O'Connor today.

Current Radar

Tropical Storm Harvey



Corpus Christi
WEATHER FORECAST OFFICE

Valid Tuesday August 29th, 2017 at 5:04 AM CDT



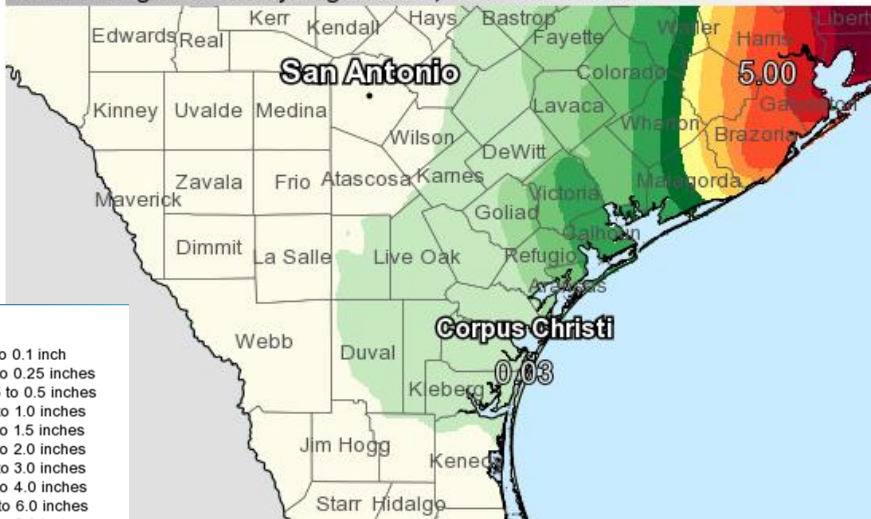
- Majority of rainfall associated with Harvey remains over Southeast Texas and the Upper Texas Coast.
- Streaks of light rain have been occurring east of a Cuero to Corpus Christi line.

Forecast Rainfall Totals thru Wednesday



Corpus Christi
WEATHER FORECAST OFFICE

Valid Ending Wednesday August 30th, 2017 at 7 PM CDT



- Less than an inch of additional rain is expected through mid week across South Texas.
- Heaviest rains will remain east of the Victoria area.

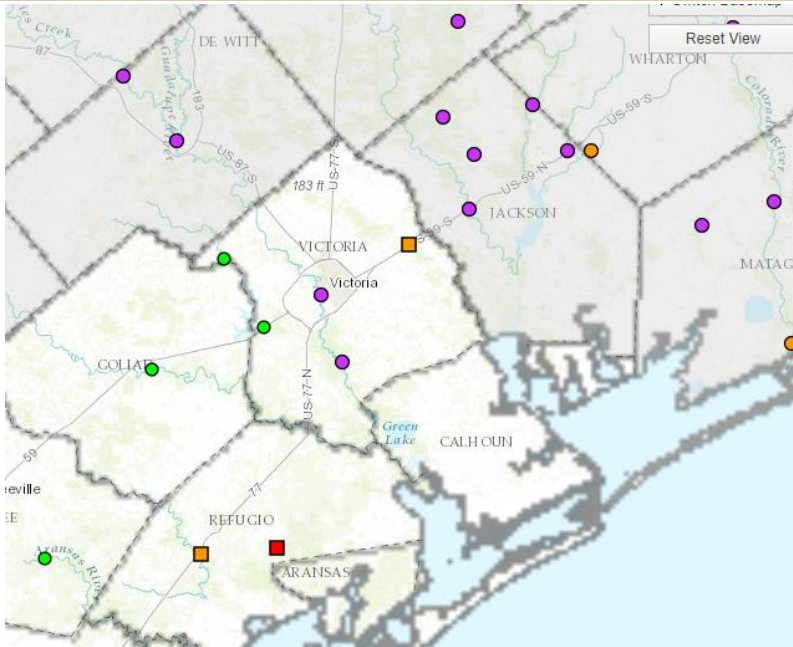


River Flooding

Based on observed and forecast rainfall for next 72 hours



Corpus Christi
WEATHER FORECAST OFFICE



- Still Forecasting Major Flooding on Guadalupe River.
- Changes along the Coleta Creek may be made based on reservoir releases.

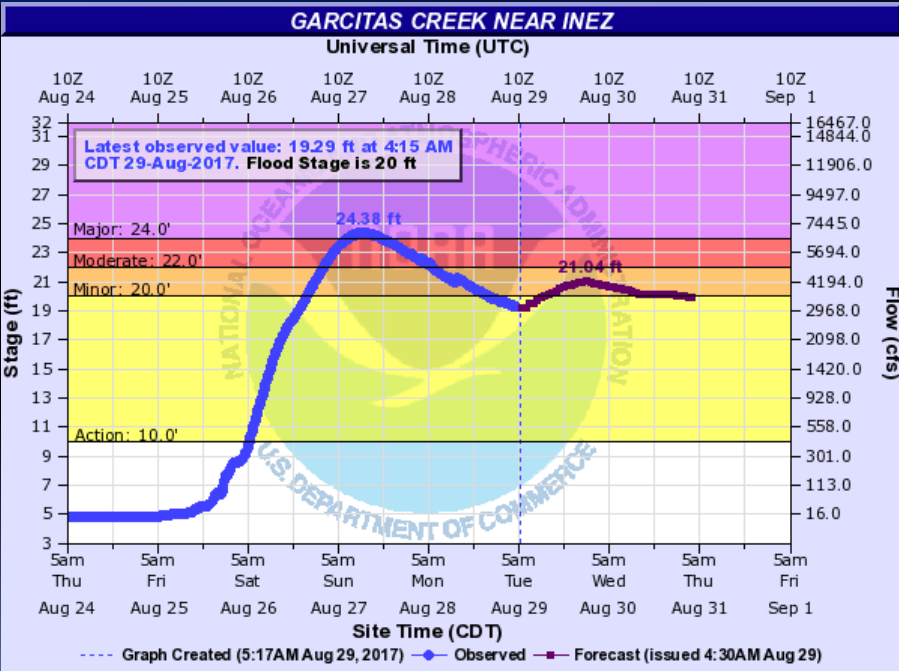
The colored symbols represent the latest forecast river level (not current river level)



Garcitas Creek near Inez

Minor Flooding Expected

Forecast/Impacts:



- ❑ Minor flooding expected.
- ❑ Second crest near 21.04 feet Tuesday night
- ❑ At 22 ft., moderate flooding occurs, causing significant crop damage. Pastureland floods and isolated livestock in cut off areas. Secondary roads and low bridges are flooded.



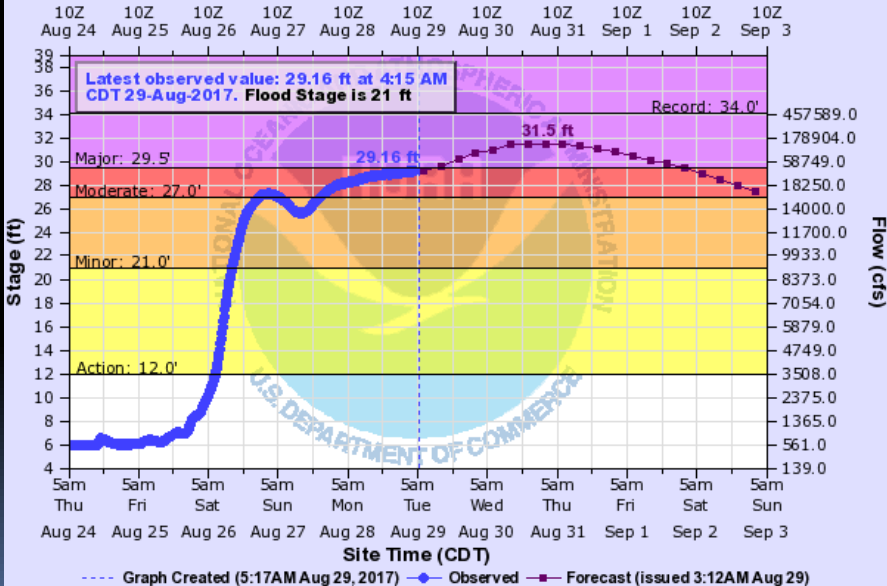
Guadalupe River At Victoria

Major Flooding Expected

Forecast/Impacts:

GUADALUPE RIVER AT VICTORIA

Universal Time (UTC)



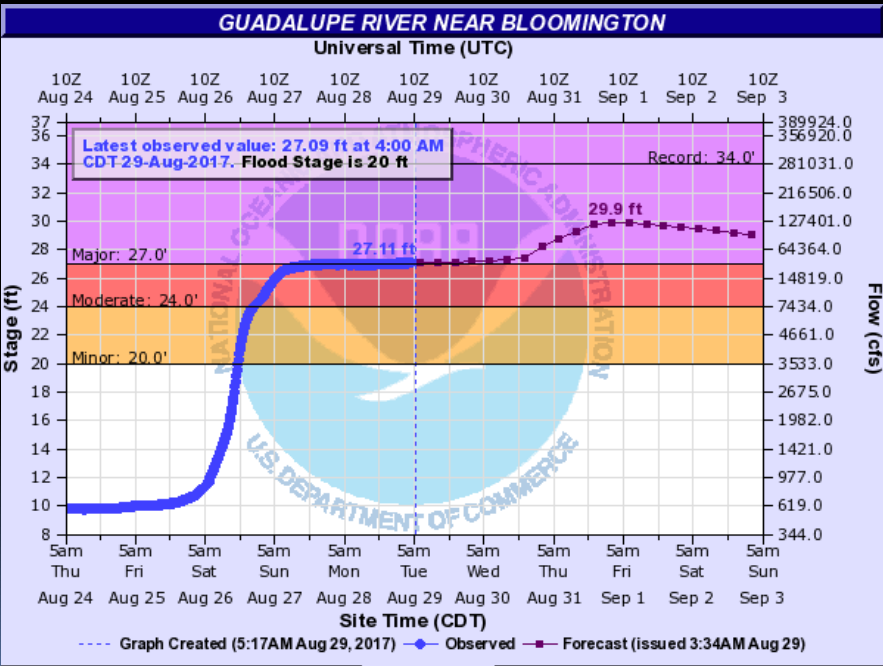
- ❑ Major flooding expected
- ❑ Crest around 31.5 feet starting late Wednesday/early Thursday.
- ❑ At 31 ft, 40 square block of Greens Addition Subdivision are generally flooded. Areas west of Moody Street between Water Street and Constitution Street flood and access may be limited, including homes near Club Westerner. Much of the flood plain below the confluence is flooded several miles wide.



Guadalupe River Near Bloomington

Major Flooding Occurring

Forecast/Impacts:



- ❑ Major flooding expected
- ❑ Continue rising to near 29.9 feet late Thursday.
- ❑ At 28 ft, water approaches the levees near the San Antonio River confluence. Miles of Highway 35 and the flood plain near it flood, cutting off many homes and flooding a fishing camp near Tivoli. Livestock are cut off and may drown.



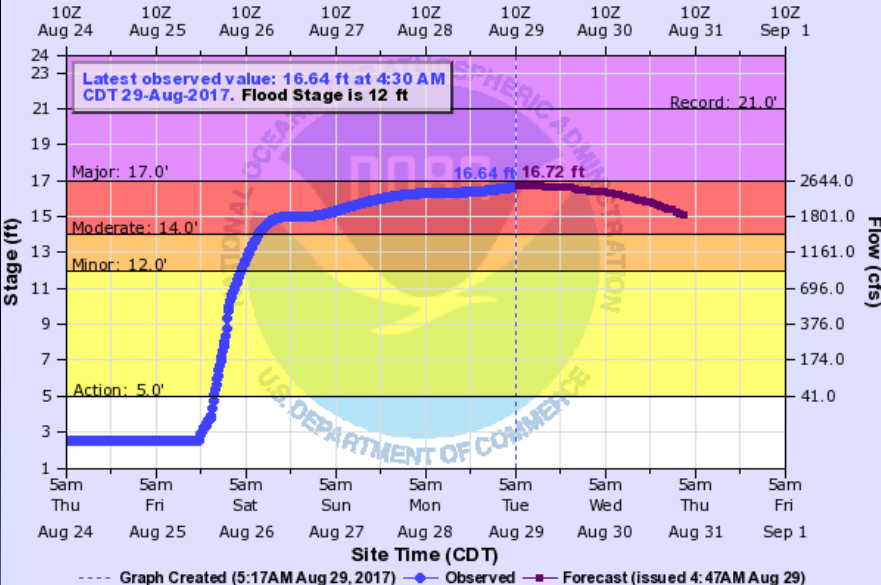
Copano Creek Near Refugio

Moderate Flooding Expected

Forecast/Impacts:

COPANO CREEK NEAR REFUGIO

Universal Time (UTC)



RCCT2(plotting HGIRG) "Gage 0" Datum: 0'

Observations courtesy of US Geological Survey

- ❑ Moderate flooding expected
- ❑ Linger around 16.7 feet for the next day or two before beginning a gradual fall.
- ❑ At 17 feet, the river is 200 yards wide at the Farm to Market 774 bridge.

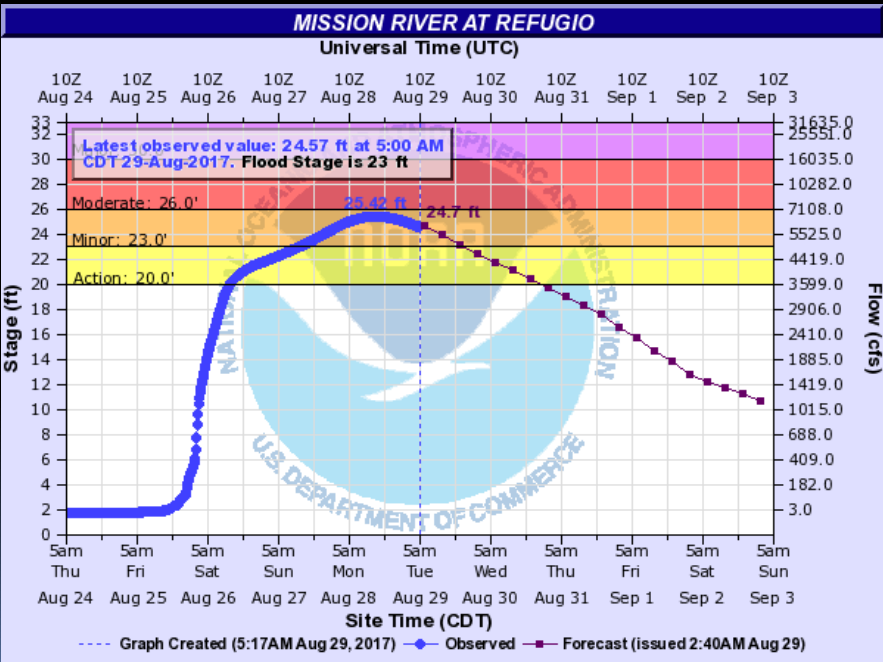


Mission River At Refugio

Minor Flooding Expected

Forecast/Impacts:

- Minor flooding expected.
- The river crested early Monday and will continue a slow fall.
- At 26 ft., flooding occurs in the city park including the pavilion building.



REFT2(plotting HGIRG) "Gage 0" Datum: 1'

Observations courtesy of US Geological Survey



Hydrologic Briefing Tropical Storm Harvey

Next Email Update: 10:30 AM
Tuesday, August 29, 2017