



# Hydrologic Briefing Tropical Storm Harvey

10:30 PM CDT  
Sunday, August 27, 2017

Prepared by:  
Jennifer Dunn/Christina Barron

# Situation Overview

## Tropical Storm Harvey



Corpus Christi  
WEATHER FORECAST OFFICE

- Harvey to remain a minimal Tropical Storm next 3 days with a movement toward the southeast toward the Matagorda coastline through Monday.
  - Tropical Storm Warning expanded to include Mesquite Bay to Port O'Connor and Aransas County
- Main concern is threat of heavy rainfall and flooding, mainly around the Victoria Crossroads area, extending east toward Houston area.
- Still forecasting Major Flood on the Guadalupe river.
- No significant hazards expected Monday in Hurricane impacted areas from Corpus Christi to Rockport

# Situation Overview



Corpus Christi  
WEATHER FORECAST OFFICE

## Tropical Storm Harvey



Harvey will drift slowly toward the Matagorda area through Monday, maintaining threat of heavy rainfall north and east of the center.

Northwest to west winds gusting 30-40 mph possible the rest of tonight and Monday

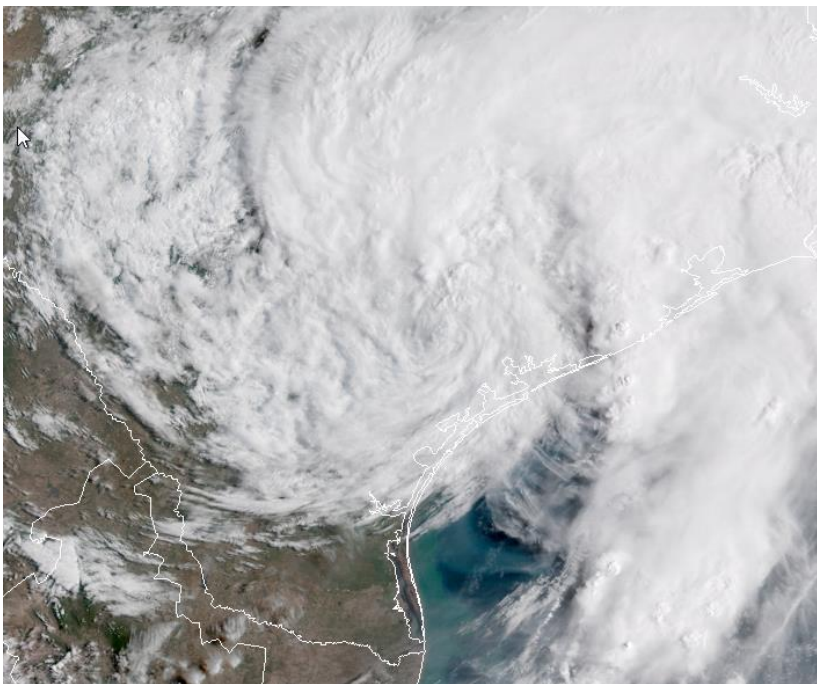
Storm Surge 1 to 3 feet above ground level in Matagorda Bay area. Returning to normal elsewhere.

# Situation Overview

## Tropical Storm Harvey



Corpus Christi  
WEATHER FORECAST OFFICE



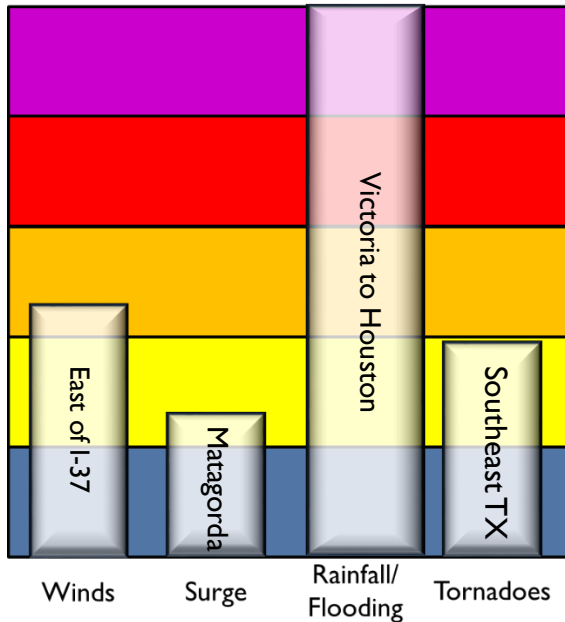
- Cloudy skies tonight through Monday with lows in the low to mid 70s, Highs on Monday in the lower 80s.
- Best chance of rain east of a Goliad to Rockport line tonight through Monday.
- Northwest to west winds gusting 30 to 40 mph.

# Threat Levels

Tropical Storm Harvey



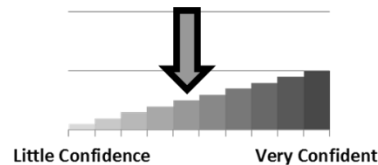
Corpus Christi  
WEATHER FORECAST OFFICE



## Threat Level

- Extreme
- High
- Moderate
- Low
- None

## Forecast Confidence



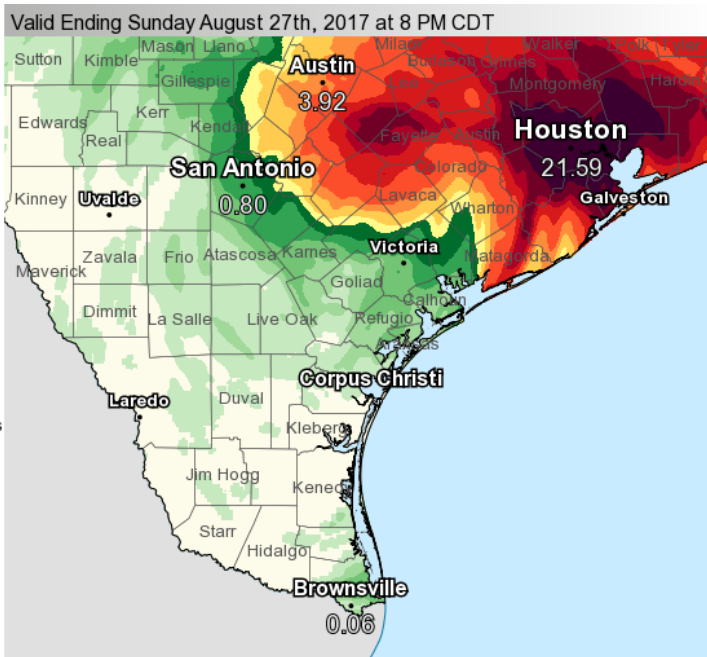
Main concern is threat of heavy rainfall and flooding across the Victoria Crossroads area extending east to Houston

# Observed Rainfall last 24 Hours



Corpus Christi  
WEATHER FORECAST OFFICE

Harvey



Graphic Created  
August 27th, 2017  
9:52 PM CDT

- The heaviest rains continue to fall north to northeast of the area.
- May see increasing rains along and east of a Goliad to Rockport line overnight into Monday as Harvey slowly moves southeast.

# Current Radar



Corpus Christi

WEATHER FORECAST OFFICE

Harvey

Valid Sunday August 27th, 2017 at 9:46 PM CDT



Graphic Created  
August 27th, 2017  
9:50 PM CDT

- Heaviest rains continue impacting Houston area.
- Bands of moderate to heavy rain expected along and east of a Goliad to Refugio line, including the Victoria area.

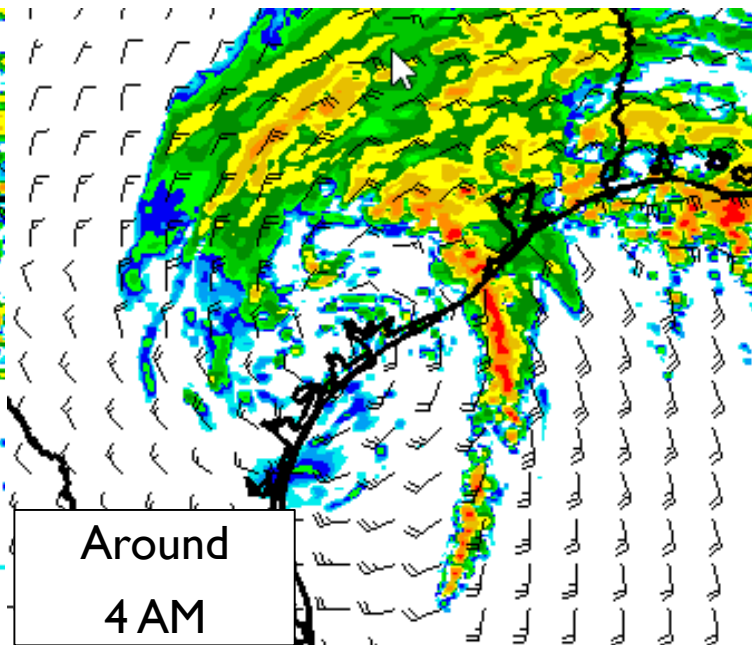
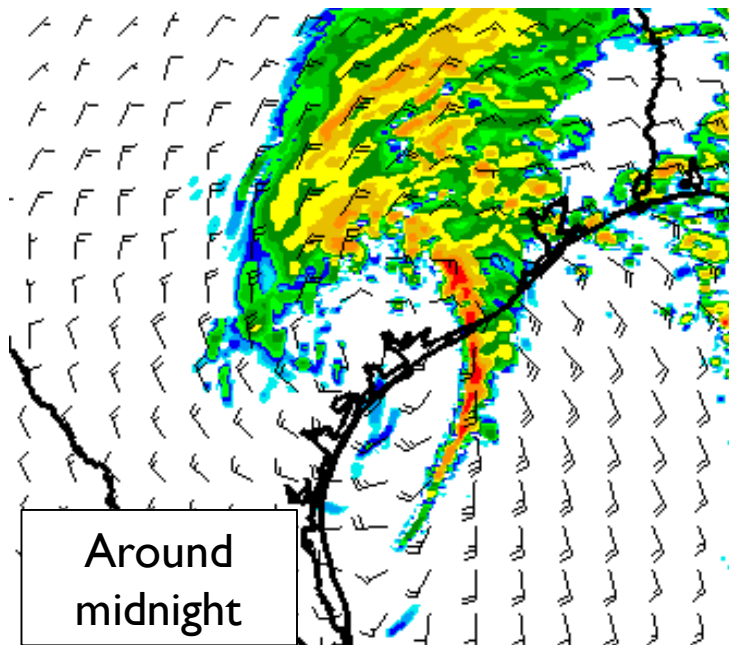
# What Might Be Possible Tonight



Corpus Christi

WEATHER FORECAST OFFICE

Note: This is one model's depiction of what could happen. Exact locations will be different





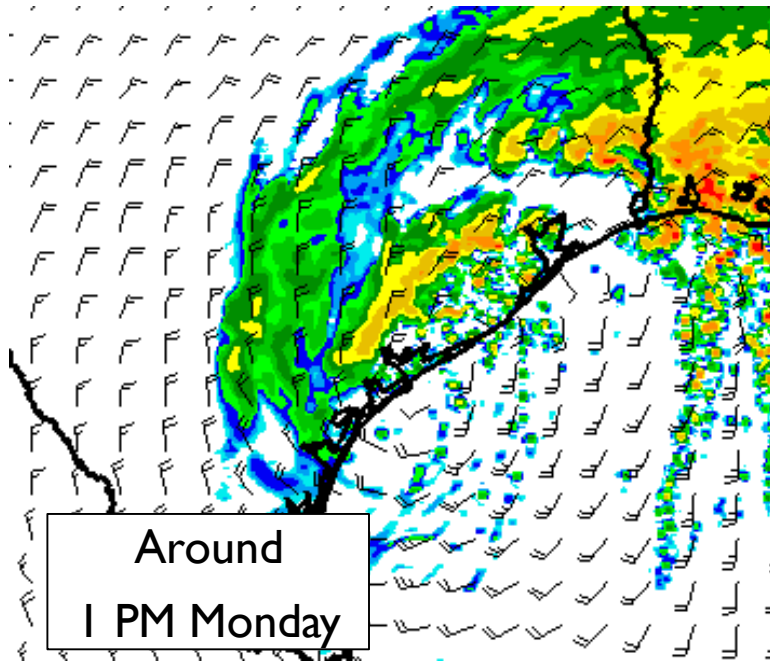
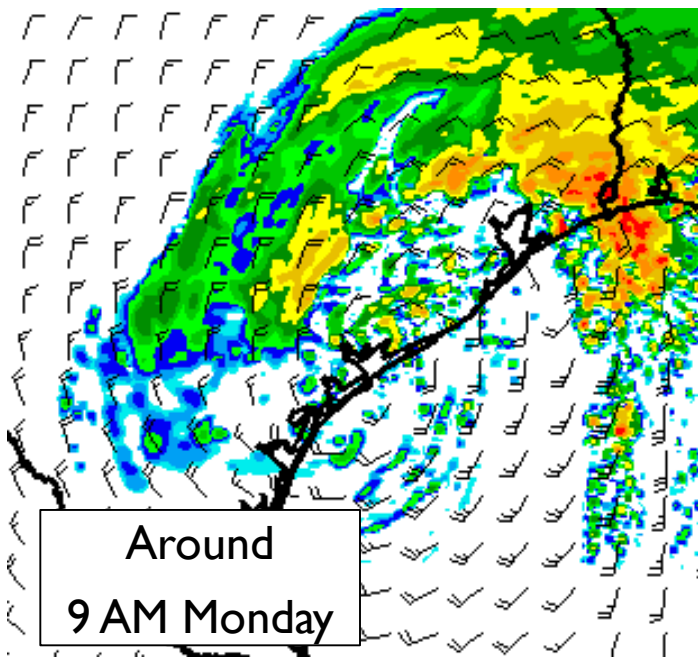
# What Might Be Possible Monday



Corpus Christi

WEATHER FORECAST OFFICE

Note: This is one model's depiction of what could happen. Exact locations will be different



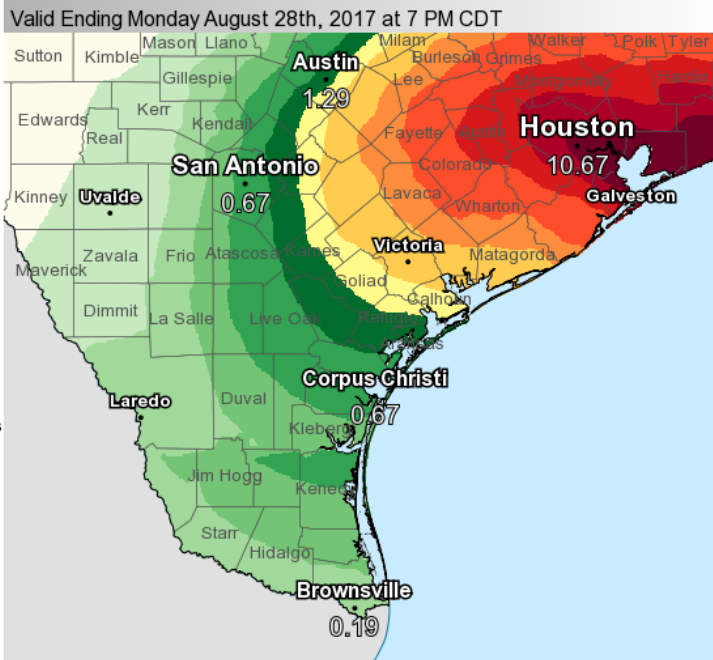
# Forecast Rainfall next 24 hours



Corpus Christi

WEATHER FORECAST OFFICE

Harvey



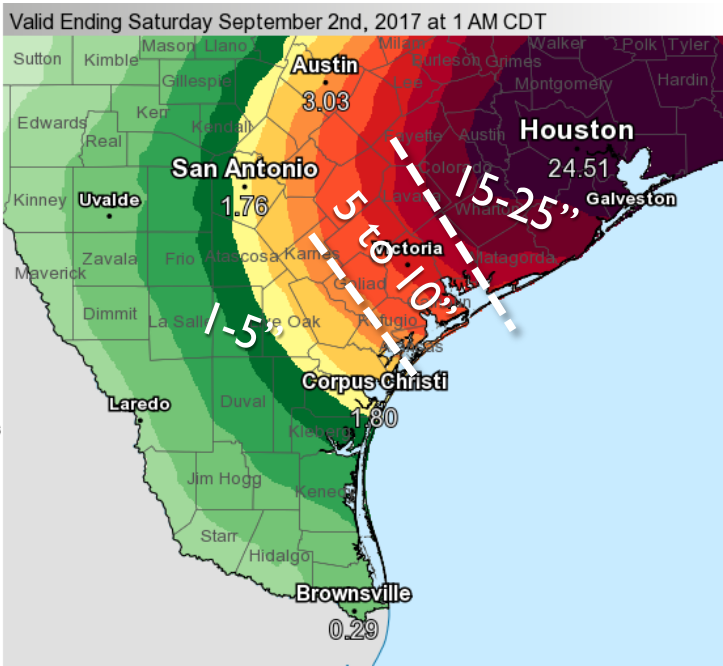
Graphic Created  
August 27th, 2017  
9:47 PM CDT

# Forecast Rainfall Totals thru Friday

Life-Threatening, Catastrophic Flooding is Expected!



Corpus Christi  
WEATHER FORECAST OFFICE



- Rainfall totals of 5-10", isolated higher amounts through the end of the week

- Isolated total amounts of +50" in Houston area



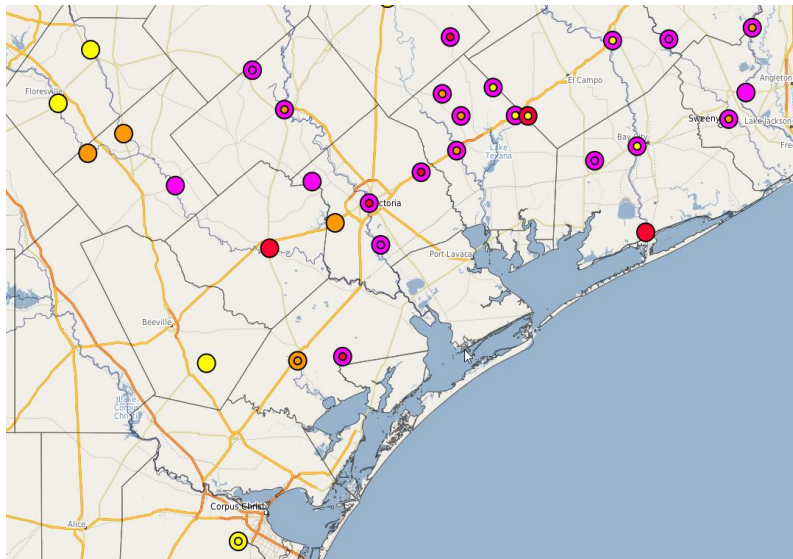
Graphic Created  
August 27th, 2017  
10:19 PM CDT

# River Flooding

Based on observed and forecast rainfall for next 72 hours



Corpus Christi  
WEATHER FORECAST OFFICE



Still Forecasting Major Flooding on Garcitas Creek, Guadalupe River, Coleto & Copano Creek.

**Catastrophic and Life threatening flooding threat still possible for Guadalupe River and Victoria area.**

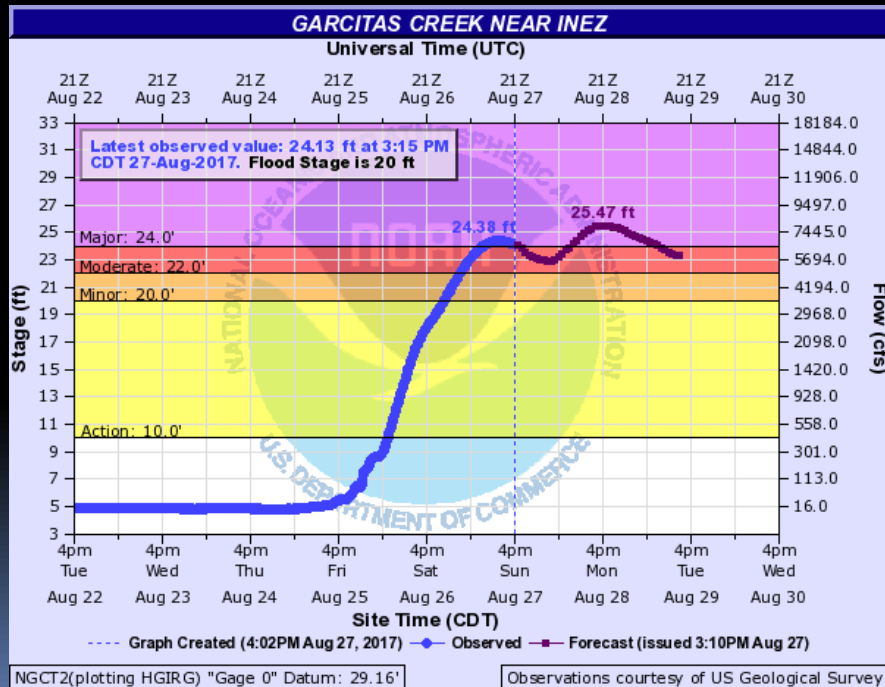
The colored symbols represent the latest forecast river level (not current river level)



# Garcitas Creek near Inez

## Major Flooding Expected

## Forecast/Impacts:



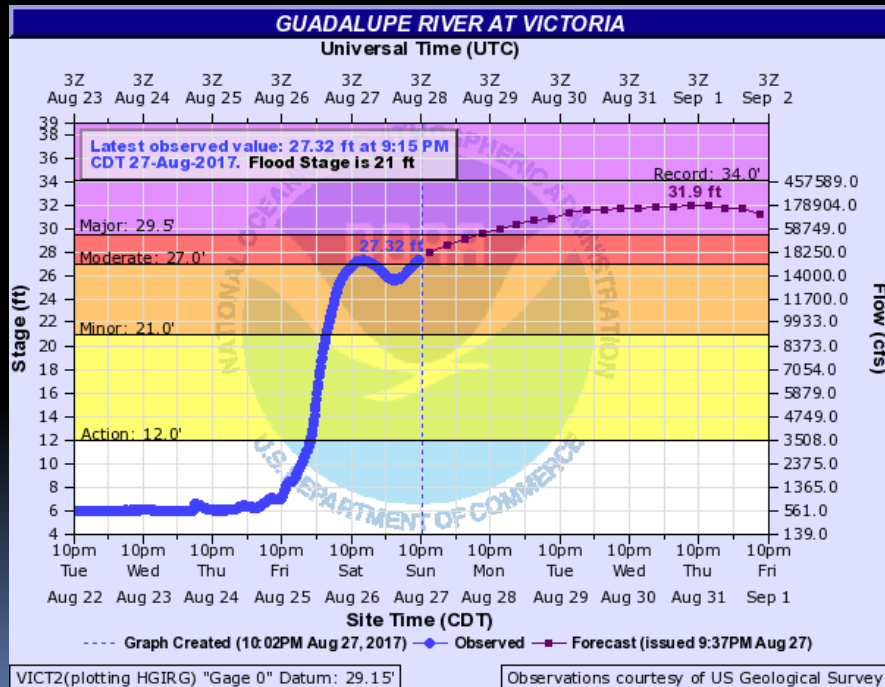
- ❑ Major flooding expected.
- ❑ Crest near 25.5 feet Monday. Additional higher rises possible.
- ❑ At 24 ft., significant crop loss occurs. Areas of pastureland and cattle are cut off. Numerous primary and secondary roads and bridges flood, including the east approach to the Highway 59 access road bridge.



# Guadalupe River At Victoria

## Major Flooding Expected

## Forecast/Impacts:



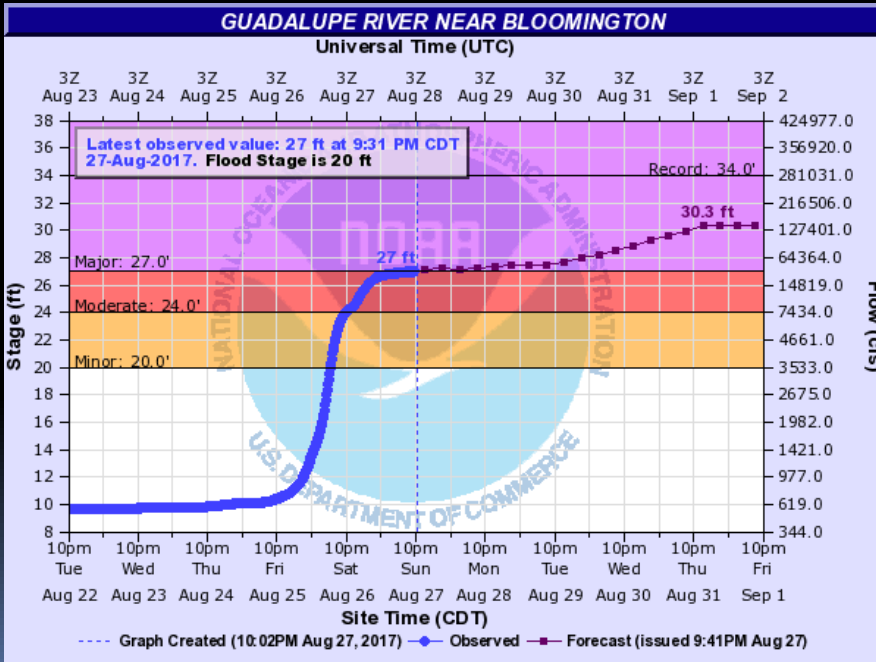
- ❑ Major flooding expected
- ❑ Crest around 32 feet starting late Wednesday/early Thursday.
- ❑ At 31 ft, 40 square block of Greens Addition Subdivision are generally flooded. Areas west of Moody Street between Water Street and Constitution Street flood and access may be limited, including homes near Club Westerner. Much of the flood plain below the confluence is flooded several miles wide.



# Guadalupe River Near Bloomington

## Major Flooding Expected

## Forecast/Impacts:



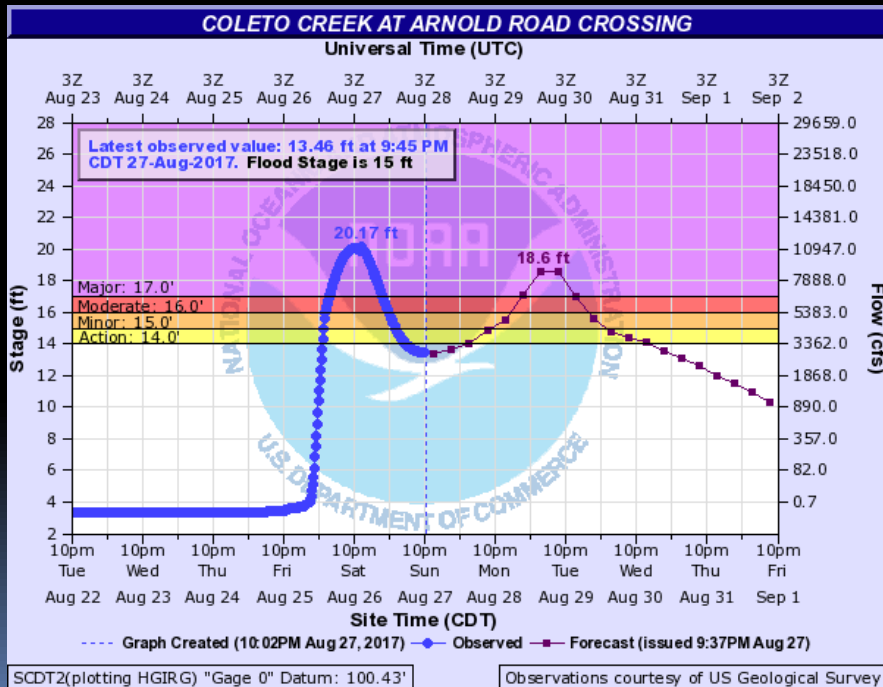
- ❑ Major flooding expected
- ❑ Continue rising to near 30 feet by Friday. Higher rises possible!
- ❑ At 28 ft, water approaches the levees near the San Antonio River confluence. Miles of Highway 35 and the flood plain near it flood, cutting off many homes and flooding a fishing camp near Tivoli. Livestock are cut off and may drown.



# Coletto Creek at Arnold Road Crossing

## Major Flooding Occurring

## Forecast/Impacts:



- ❑ Major flooding occurring with another rise starting tonight.
- ❑ Crest around 18.5 feet late Monday/early Tuesday.
- ❑ At 17 feet, livestock are cut off. Roads and bridges near the river are flooded and dangerous

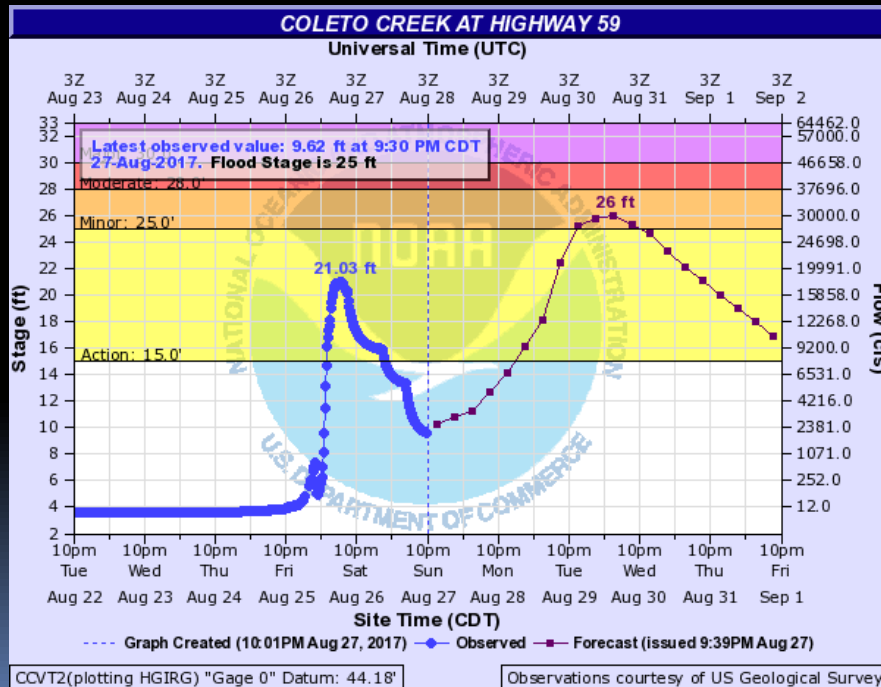




# Coleta Creek at Highway 59

## Moderate Flooding Expected

### Forecast/Impacts:



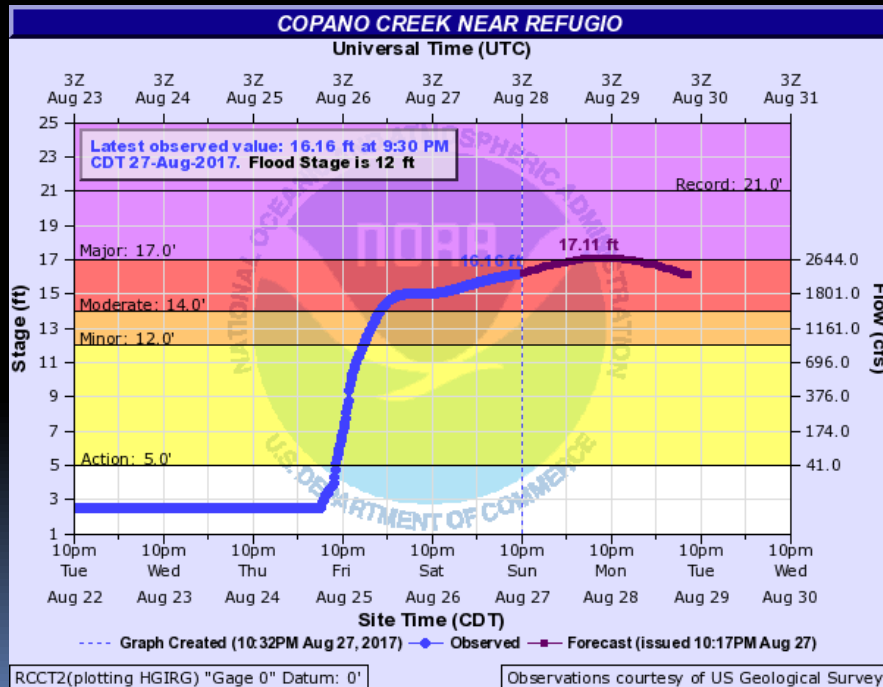
- ❑ Moderate flooding expected (based on anticipated releases from Coleta Creek AND basin rainfall)
- ❑ Crest near 26 feet Wednesday
- ❑ At 25 ft, Camino Drive is inundated. Livestock below Highway 59 to the Guadalupe River confluence are cut off.



# Copano Creek Near Refugio

## Major Flooding Expected

## Forecast/Impacts:



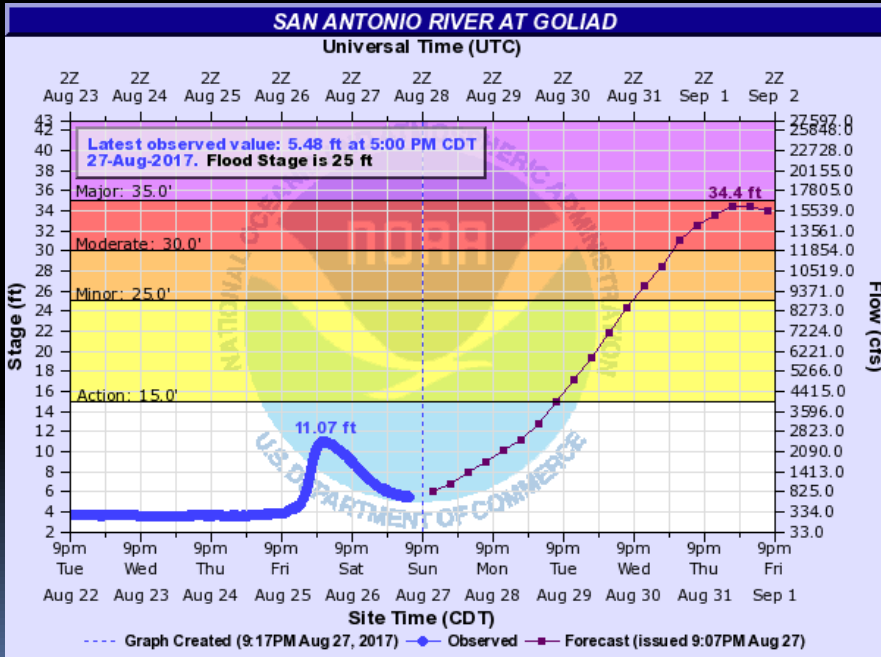
- ❑ Major flooding expected
- ❑ Crest around 17 feet starting Monday morning. Additional higher rises possible, depending on Harvey's track.
- ❑ At 17 feet, the river is 200 yards wide at the Farm to Market 774 bridge.



# San Antonio River At Goliad

## Moderate Flooding Expected

## Forecast/Impacts:



- ❑ Moderate flooding expected
- ❑ Crest near 34.5 feet Thursday.
- ❑ At 33-35 ft, roads, many camp sites, RV and temporary shelter sites in Goliad State Park flood. Hundreds of livestock downstream of the flood plain are cut off and may drown.



# Hydrologic Briefing Tropical Storm Harvey

Next Update: 5:00 am  
Monday, August 28, 2017