



# Hydrologic Briefing Tropical Storm Harvey

10:30 AM CDT  
Sunday, August 27, 2017

Prepared by:  
John Metz

# Situation Overview

## Tropical Storm Harvey



Corpus Christi  
WEATHER FORECAST OFFICE

- Harvey to remain a minimal Tropical Storm next 3 days with a drift toward the southeast toward the Matagorda coastline through Tuesday.
- Main concern is for threat of heavy rainfall and flooding, mainly across the northeast Coastal Bend near Victoria extending east toward Houston Area.
- Still forecasting Major Flood on the Guadalupe river.
- No significant hazards expected Today in Hurricane impacted areas from Corpus Christi to Rockport.

# Situation Overview



Corpus Christi  
WEATHER FORECAST OFFICE

## Tropical Storm Harvey



Harvey will drift slowly toward the Matagorda area through Tuesday maintaining threat of tropical storm heavy rainfall north and east of the center.

Northwest to west winds gusting 35 to 45 mph possible Today

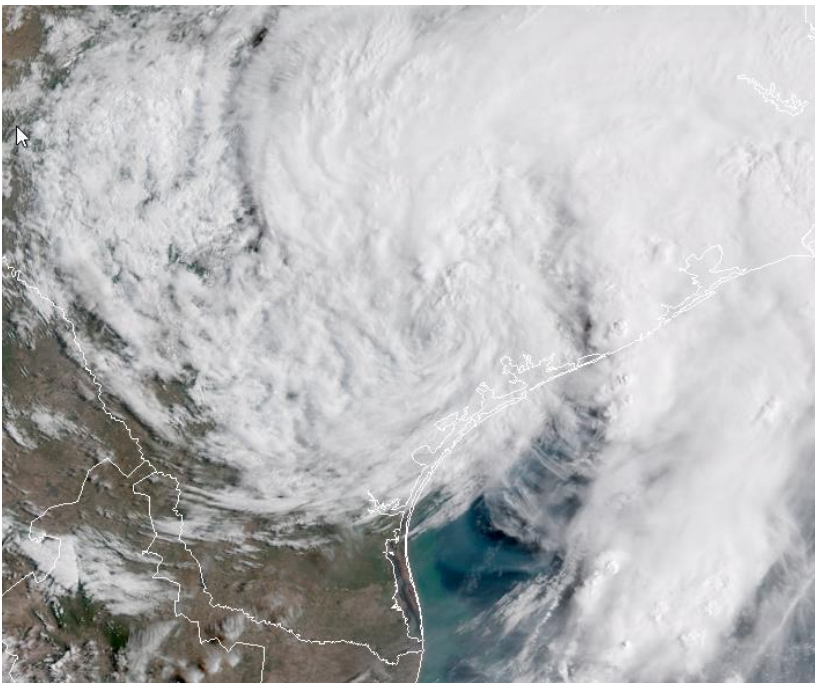
Storm Surge 1 to 3 feet above Ground level in Matagorda Bay area.  
Returning to normal elsewhere.

# Situation Overview

## Tropical Storm Harvey



Corpus Christi  
WEATHER FORECAST OFFICE



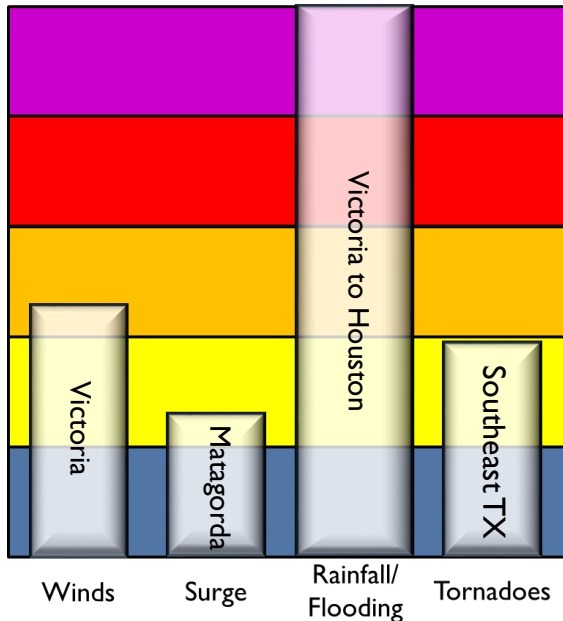
- Cloudy skies today with High Temperatures in the lower 80s east to upper 80s along the Rio Grande.
- Best chance of rain across the Victoria area this afternoon.
- Northwest to west winds gusting 35 to 45 mph.

# Threat Levels

Tropical Storm Harvey



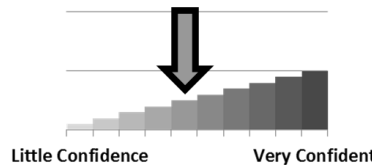
Corpus Christi  
WEATHER FORECAST OFFICE



## Threat Level

- Extreme
- High
- Moderate
- Low
- None

## Forecast Confidence



Main concern is threat of heavy rainfall and flooding across the Northeast Coastal Bend near Victoria extending east to Houston

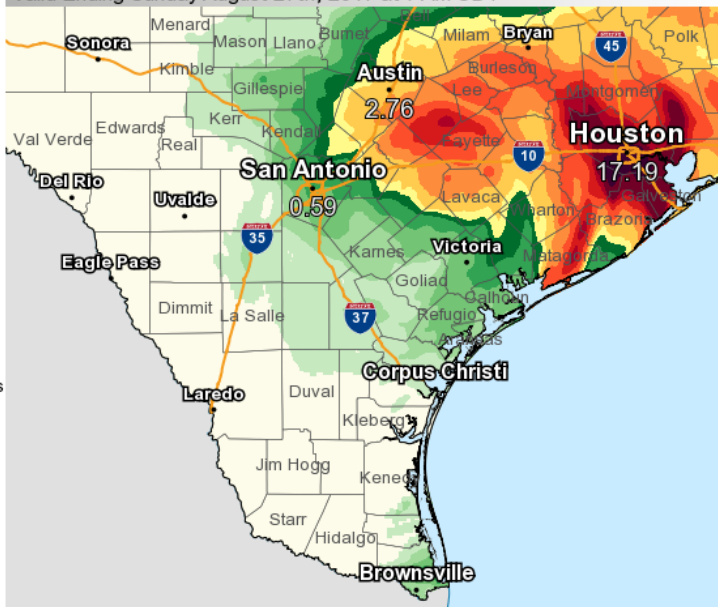
# Observed Rainfall last 12 Hours



Corpus Christi  
WEATHER FORECAST OFFICE

Harvey

Valid Ending Sunday August 27th, 2017 at 7 AM CDT



- Heaviest rains fell to the northeast of Victoria overnight.
- Guadalupe River basin upstream from Victoria observed an additional 1-2 inches of rainfall.

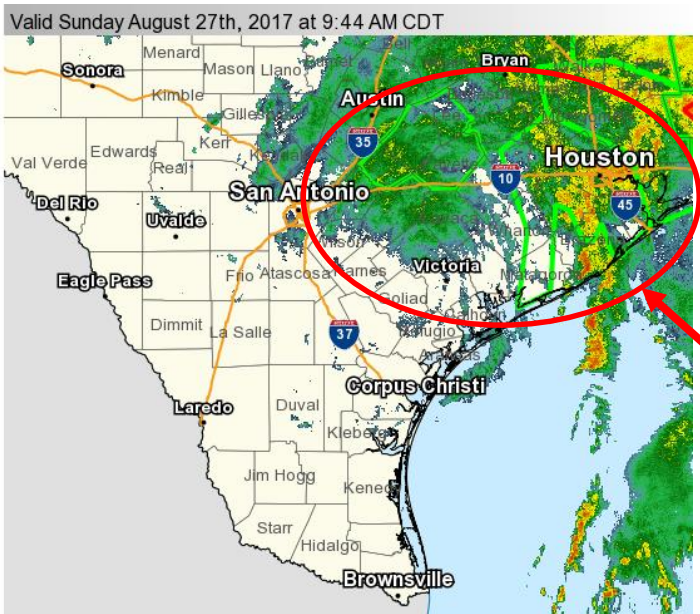
Graphic Created  
August 27th, 2017  
8:46 AM CDT

# Current Radar

Harvey



Corpus Christi  
WEATHER FORECAST OFFICE



- Heaviest rains currently impacting Houston area.
- Bands of heavy rain expected to redevelop across Victoria Area and locations north and east of Victoria this afternoon through Tonight.

Graphic Created  
August 27th, 2017  
9:47 AM CDT

# What Might Be Possible Today

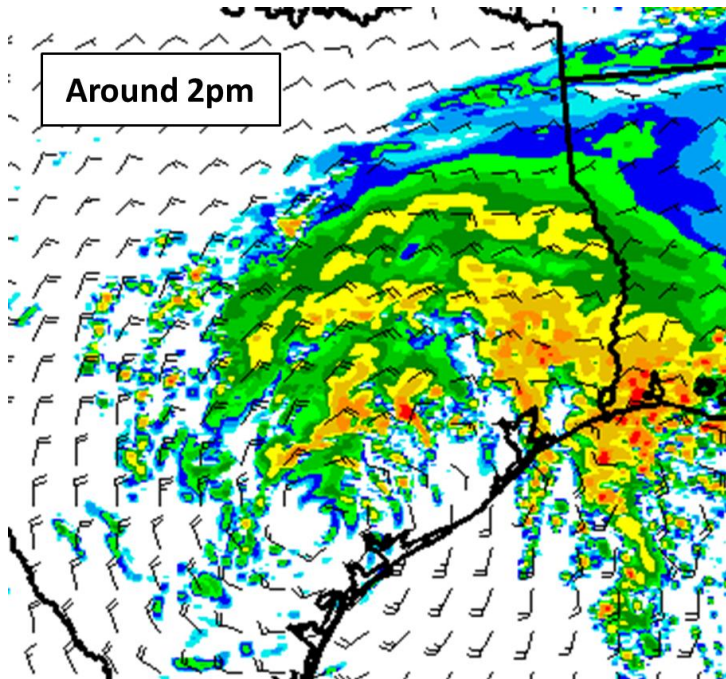


Corpus Christi

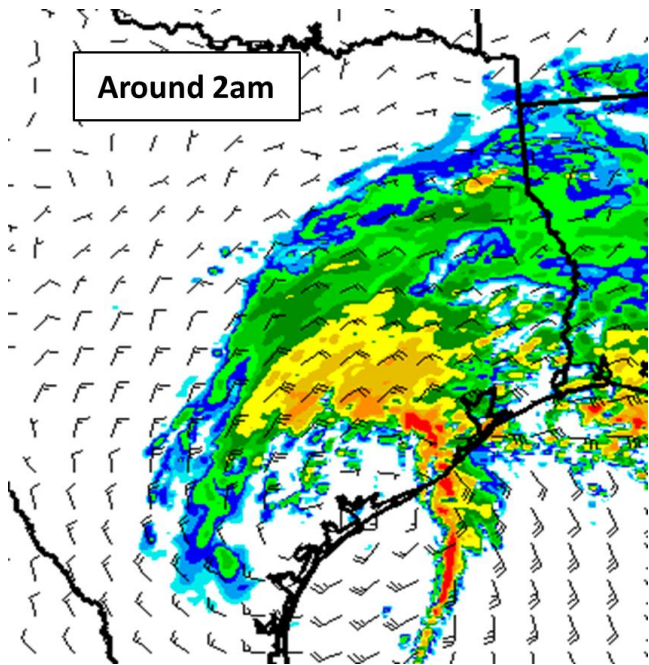
WEATHER FORECAST OFFICE

Note: This is one model's depiction of what could happen. Exact locations will be different

Around 2pm



Around 2am





# What Might Be Possible Monday

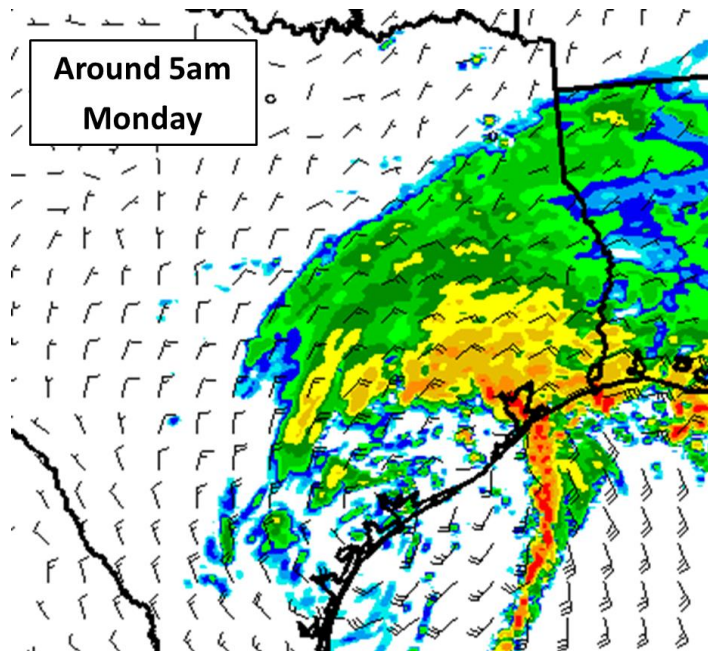


Corpus Christi

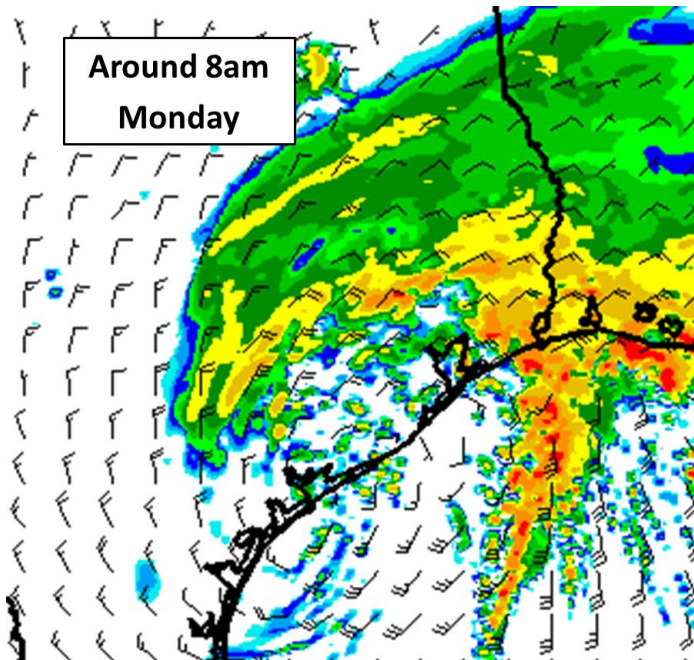
WEATHER FORECAST OFFICE

Note: This is one model's depiction of what could happen. Exact locations will be different

Around 5am  
Monday



Around 8am  
Monday



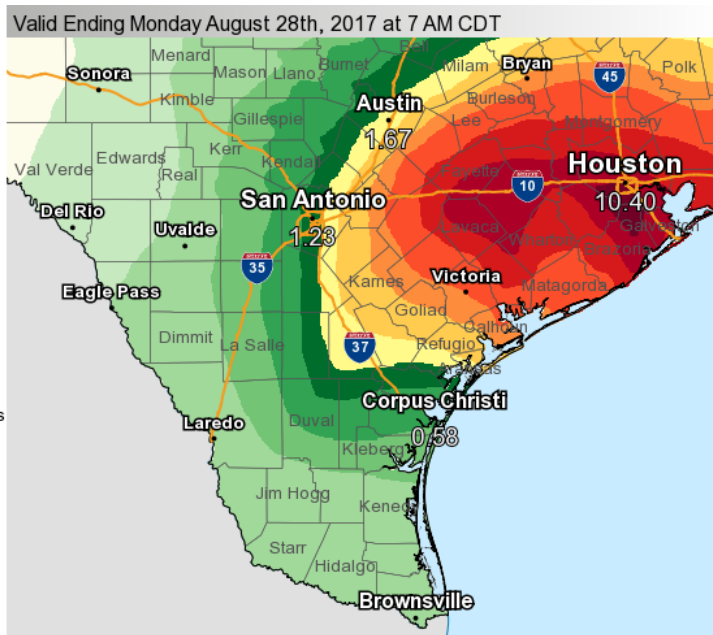
# Forecast Rainfall next 24 hours



Corpus Christi

WEATHER FORECAST OFFICE

Harvey



Graphic Created  
August 27th, 2017  
8:37 AM CDT

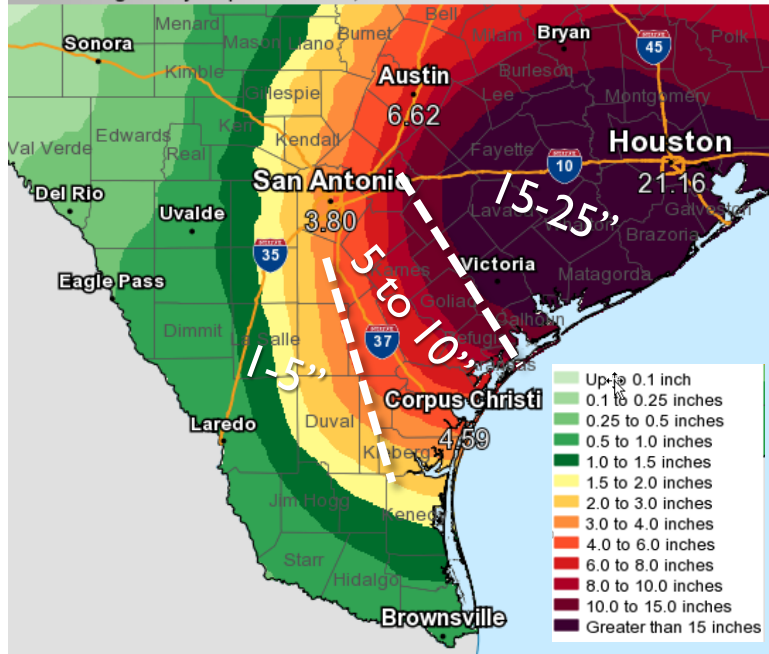
# Forecast Rainfall Totals thru Friday



Corpus Christi  
WEATHER FORECAST OFFICE

Life-Threatening, Catastrophic Flooding is Expected!

Valid Ending Friday September 1st, 2017 at 7 PM CDT



- Rainfall totals of 15-25" through the end of the week
- Isolated +50" amounts (mainly Houston area)

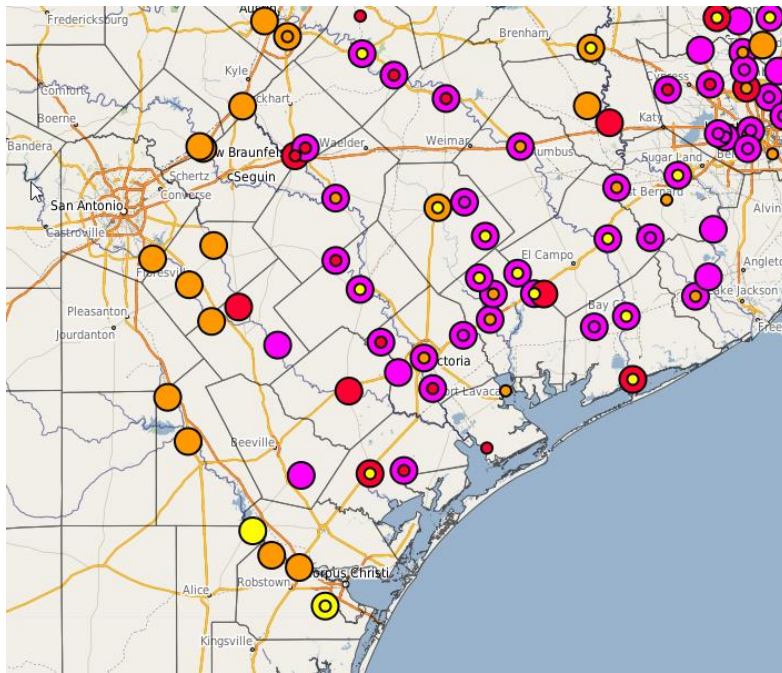


# River Flooding

Based on observed and forecast rainfall for next 72 hours



Corpus Christi  
WEATHER FORECAST OFFICE



Still Forecasting Major Flooding on Garcitas Creek, Guadalupe River, Coleta Creek, Aransas River, and Copano Creek.

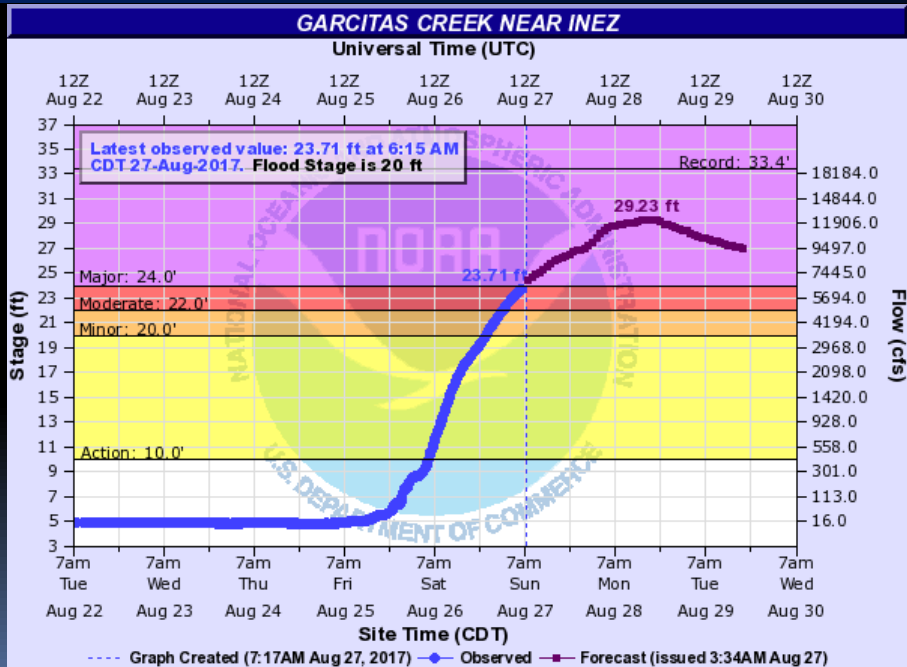
**Catastrophic and Life threatening flooding threat still possible for Guadalupe River and Victoria area.**



# Garcitas Creek near Inez

## Major Flooding Expected

### Forecast/Impacts:



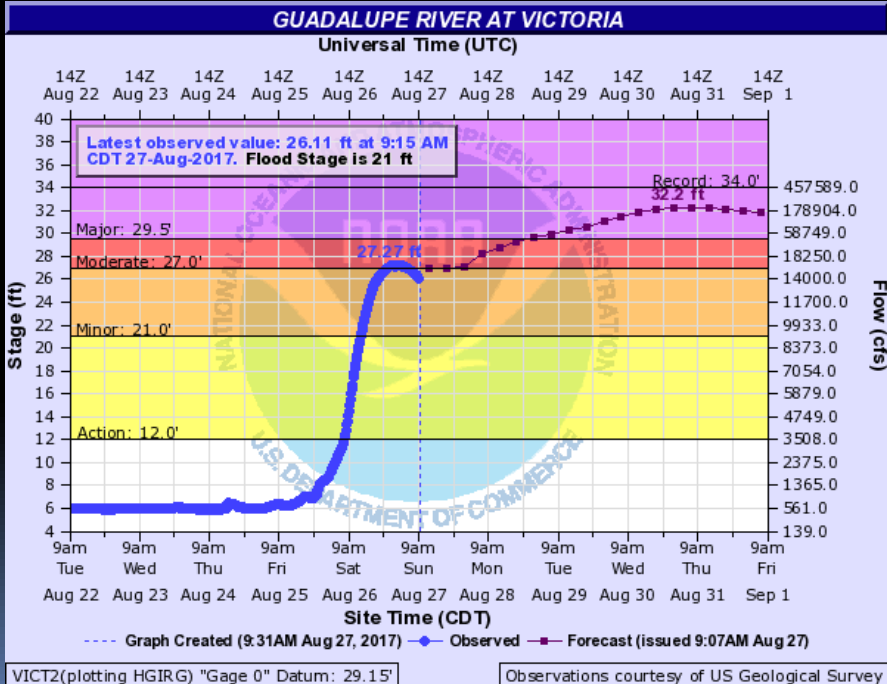
- ❑ Major flooding expected (based on rainfall forecasts through Sunday evening).
- ❑ Crest near 29.2 feet Monday. Additional higher rises possible.
- ❑ At 24 ft., significant crop loss occurs. Areas of pastureland and cattle are cut off. Numerous primary and secondary roads and bridges flood, including the east approach to the Highway 59 access road bridge.



# Guadalupe River At Victoria

## Major Flooding Expected

## Forecast/Impacts:



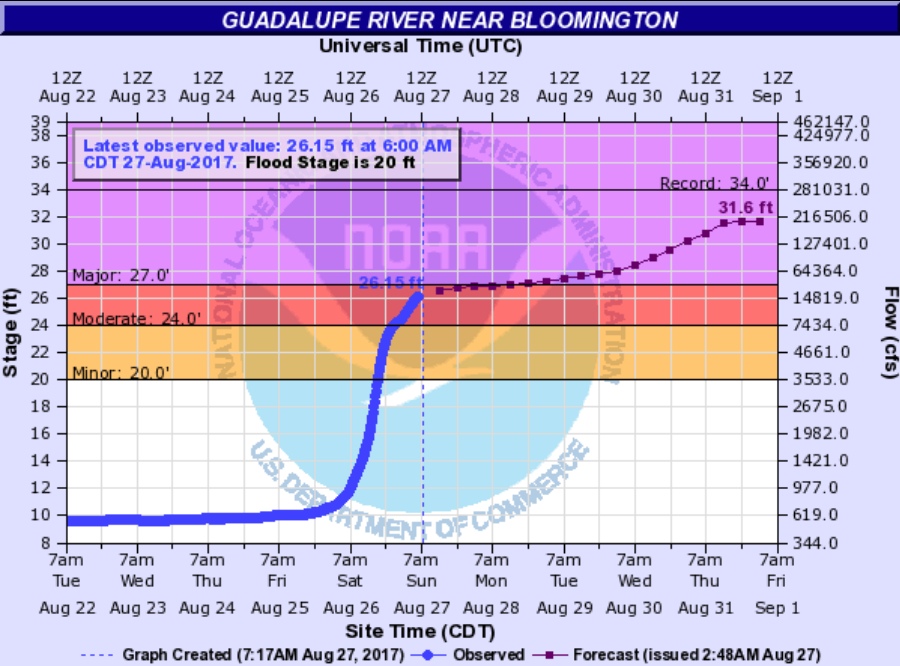
- ❑ Major flooding expected
- ❑ Crest around 32.2 feet late Wednesday/early Thursday.
- ❑ At 32.2 ft, at least 40 square block of Greens Addition Subdivision are flooded. Areas west of Moody Street between Water Street and Constitution Street flood. Flooding increases in Riverside Park, including much of the golf course, and Texas Zoo. Much of the flood plain below the confluence is flooded several miles wide.
- ❑ 32.2 ft is the 100 year flood!



# Guadalupe River Near Bloomington

## Major Flooding Expected

## Forecast/Impacts:



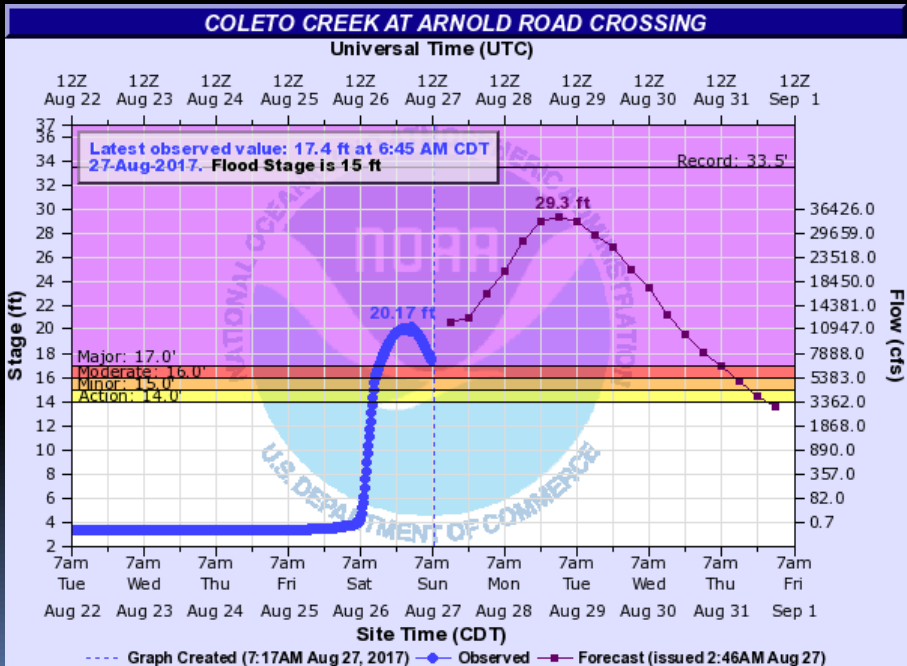
- ❑ Major flooding expected
- ❑ Continue rising to near 31.6 feet on Thursday night. Higher rises possible!
- ❑ At 28 ft, water approaches the levees near the San Antonio River confluence. Miles of Highway 35 and the flood plain near it flood, cutting off many homes and flooding a fishing camp near Tivoli. Livestock are cut off and may drown.
- ❑ 34.0 ft. is the flood or record.



# Coletto Creek at Arnold Road Crossing

## Major Flooding Occurring

## Forecast/Impacts:



- ❑ Major flooding occurring with higher rises expected.
- ❑ Crest around 29.3 feet late Monday/early Tuesday.
- ❑ At 28 feet, water is to the lowest portion of the new bridge. Low water crossings are inundated with several feet of water which may cut off residents.

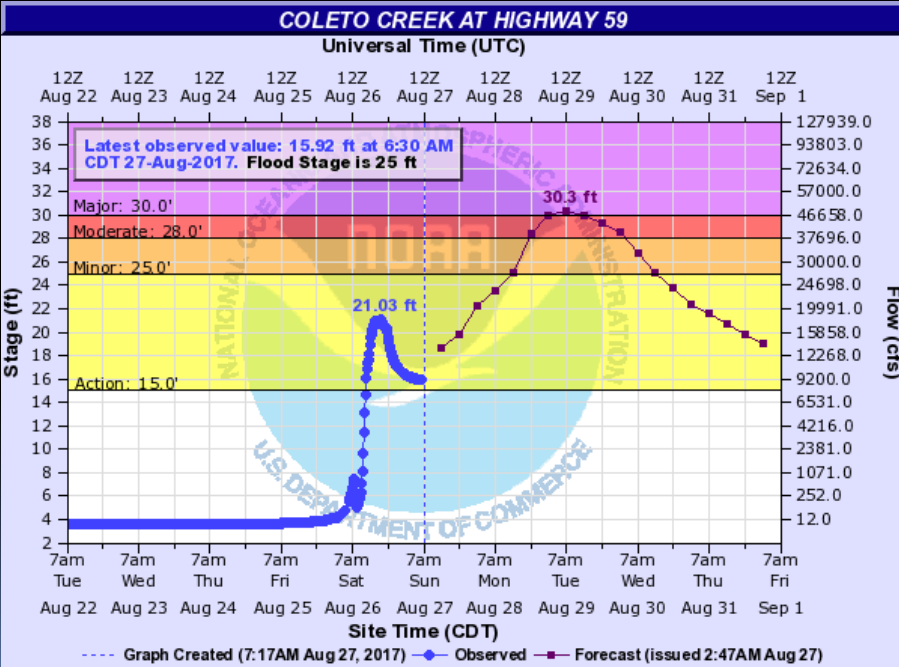




# Coletto Creek at Highway 59

## Major Flooding Expected

## Forecast/Impacts:



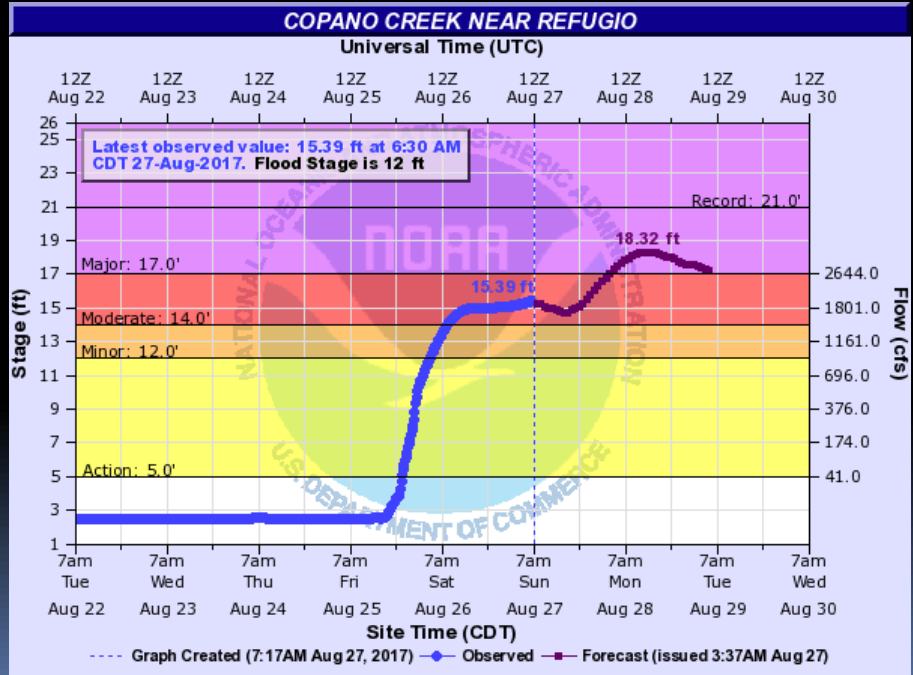
- ❑ Major flooding expected (based on anticipated releases from Coletto Creek AND basin rainfall)
  - ❑ Crest near 30.3 feet late Monday/early Tuesday
  - ❑ At 31 ft., the lowest homes near Highway 59 flood. Many livestock are cut off and potentially drown below Highway 59 and the Guadalupe River confluence.
  - ❑ At 30 ft., flow approaches the lowest homes below Hwy 59.
- Issued at 8:32 AM - August 27, 2017



# Copano Creek Near Refugio

## Major Flooding Expected

## Forecast/Impacts:



- Major flooding expected (based on 48 hour rainfall amounts).
- Crest around 18.3 feet Monday morning. Additional higher rises possible, depending on Harvey's track.
- At 18.6 feet, water reaches the FM 774 bridge floor.
- At 17 feet, The river is 200 yards wide at the Farm to Market 774 bridge.



# San Antonio River At Goliad

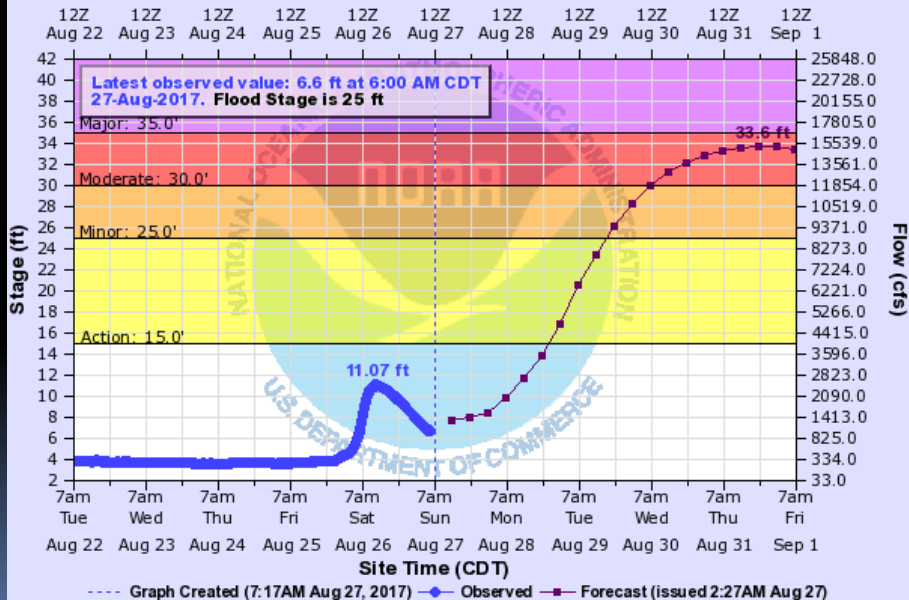
## Moderate Flooding Expected

## Forecast/Impacts:

- Moderate flooding expected
- Crest near 33.6 feet Thursday.
- At 35 ft, roads, many camp sites, RV and temporary shelter sites in Goliad State Park flood. Hundreds of livestock downstream of the flood plain are cut off and may drown.
- At 40 ft, nearly all of Goliad State Park floods except the HQ area and mission. Many secondary and primary roads and low bridges flood. Flow approaches the lowest residences in the south edge of Goliad and Highway 183. Livestock are cut off and may drown in the flood plains below Falls City to the confluence.

### SAN ANTONIO RIVER AT GOLIAD

Universal Time (UTC)





# Hydrologic Briefing Tropical Storm Harvey

Next Update 4:30pm  
Sunday, August 27, 2017