



Hydrologic Briefing Tropical Storm Harvey

5:00 PM CDT
Sunday, August 27, 2017

Prepared by:
Jennifer Dunn/Christina Barron

Situation Overview

Tropical Storm Harvey



Corpus Christi
WEATHER FORECAST OFFICE

- Harvey to remain a minimal Tropical Storm next 3 days with a drift toward the southeast toward the Matagorda coastline through Monday.
- Main concern is threat of heavy rainfall and flooding, mainly across the around the Victoria Crossroads area, extending east toward Houston area.
- Still forecasting Major Flood on the Guadalupe river.
- No significant hazards expected Today in Hurricane impacted areas from Corpus Christi to Rockport.

Situation Overview



Corpus Christi
WEATHER FORECAST OFFICE

Tropical Storm Harvey



Harvey will drift slowly toward the Matagorda area through Monday maintaining threat of heavy rainfall north and east of the center.

Northwest to west winds gusting 30-40 mph possible the rest of day and tonight

Storm Surge 1 to 3 feet above ground level in Matagorda Bay area.

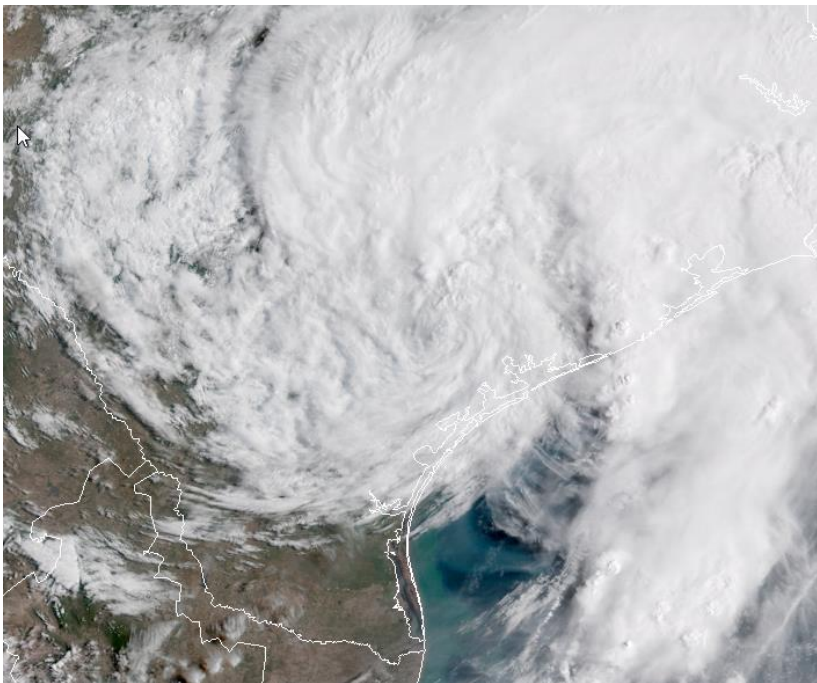
Returning to normal elsewhere.

Situation Overview

Tropical Storm Harvey



Corpus Christi
WEATHER FORECAST OFFICE



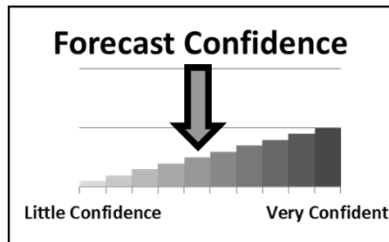
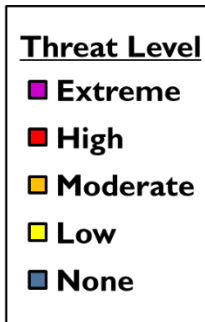
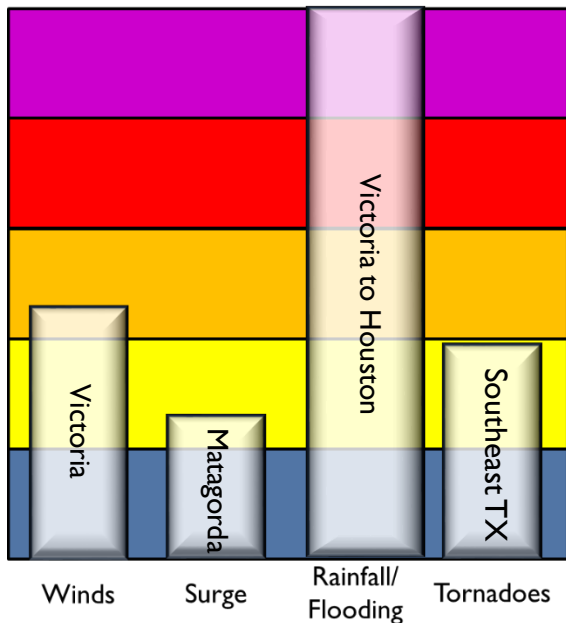
- Cloudy skies tonight with lows in the low to mid 70s.
- Best chance of rain across the Victoria area this afternoon and tonight.
- Northwest to west winds gusting 30 to 40 mph.

Threat Levels

Tropical Storm Harvey



Corpus Christi
WEATHER FORECAST OFFICE



Main concern is threat of heavy rainfall and flooding across the Victoria Crossroads area extending east to Houston

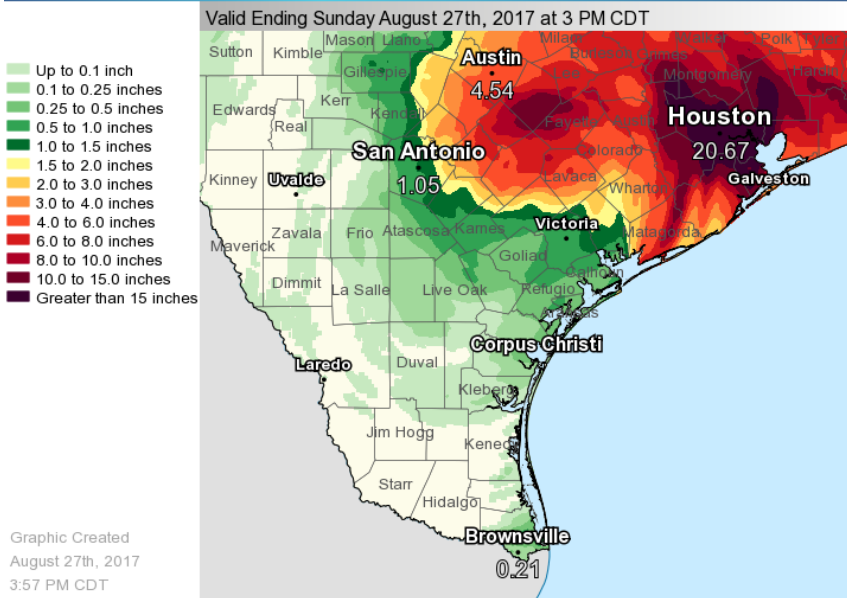
Observed Rainfall last 24 Hours



Corpus Christi
WEATHER FORECAST OFFICE

Harvey

Observed Precipitation



- Over the past 6-12 hours, 0.50" – 1.0" inches of rain has fallen in the Goliad to Victoria areas.
- The heaviest rains continue to fall just north to northeast of the area.
- May see increasing rains overnight as Harvey starts to slowly shift south.

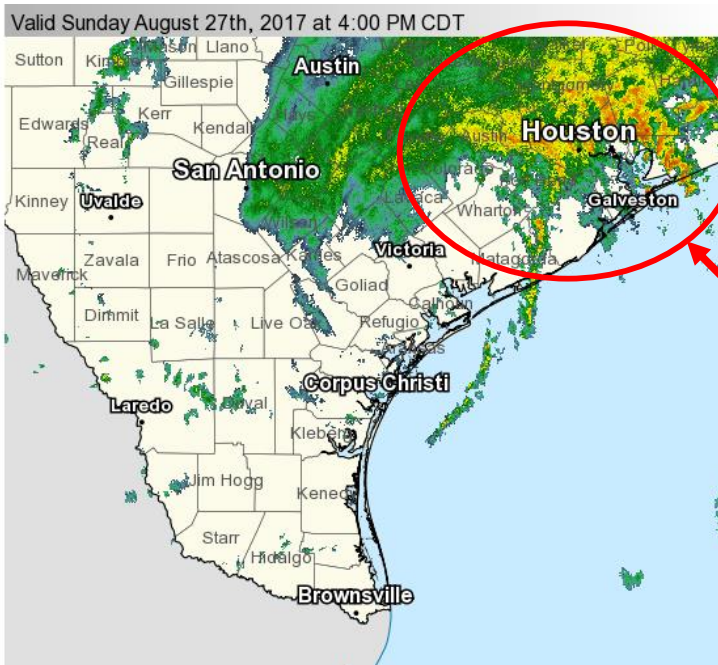
Current Radar



Corpus Christi

WEATHER FORECAST OFFICE

Harvey



- Heaviest rains continue impacting Houston area.
- Bands of heavy rain expected to redevelop across Victoria Area and locations north and east of Victoria tonight into tomorrow.

Graphic Created
August 27th, 2017
4:03 PM CDT

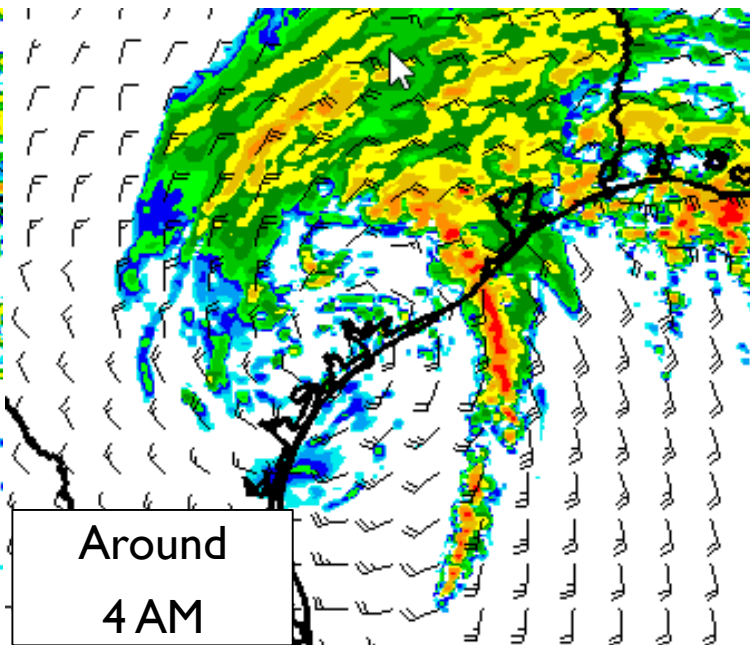
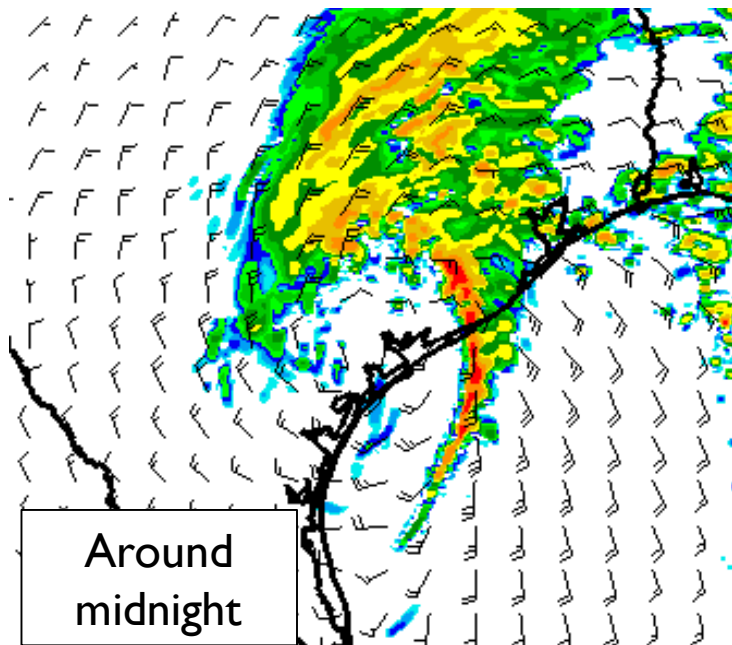
What Might Be Possible Tonight



Corpus Christi

WEATHER FORECAST OFFICE

Note: This is one model's depiction of what could happen. Exact locations will be different



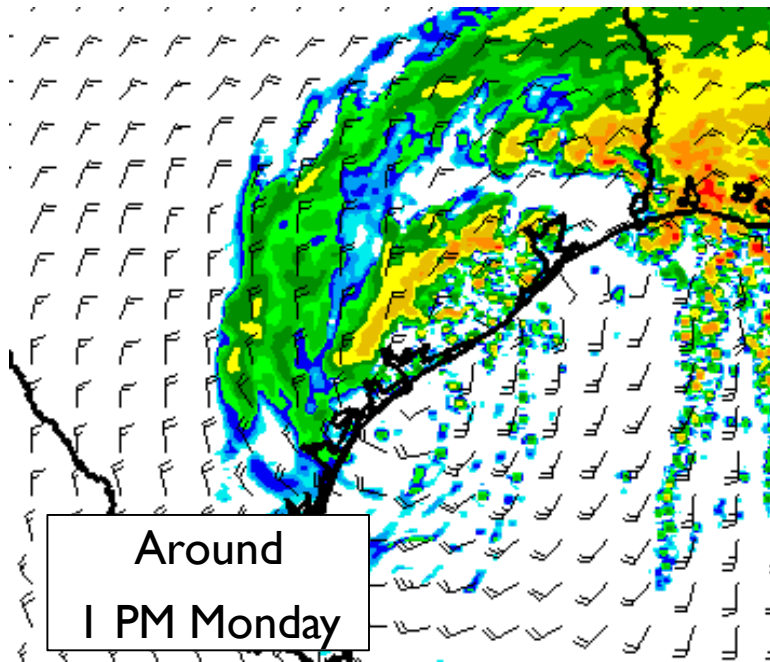
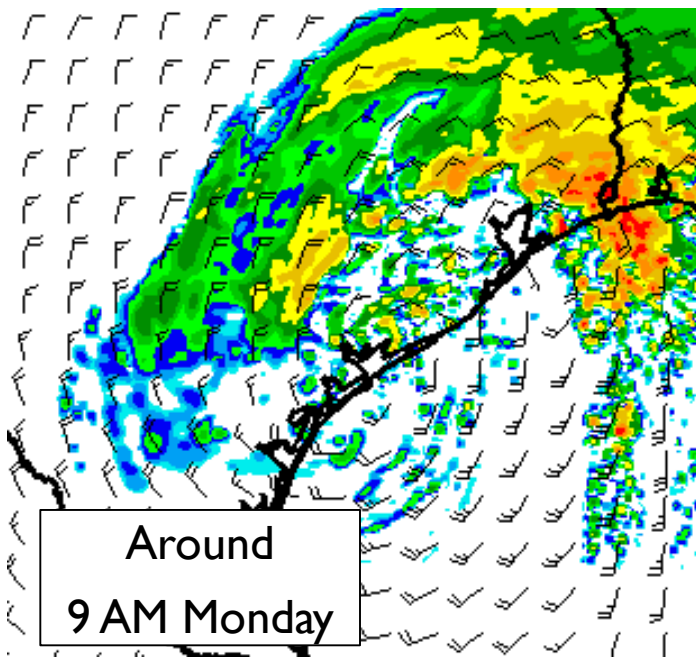
What Might Be Possible Monday



Corpus Christi

WEATHER FORECAST OFFICE

Note: This is one model's depiction of what could happen. Exact locations will be different



Forecast Rainfall next 24 hours

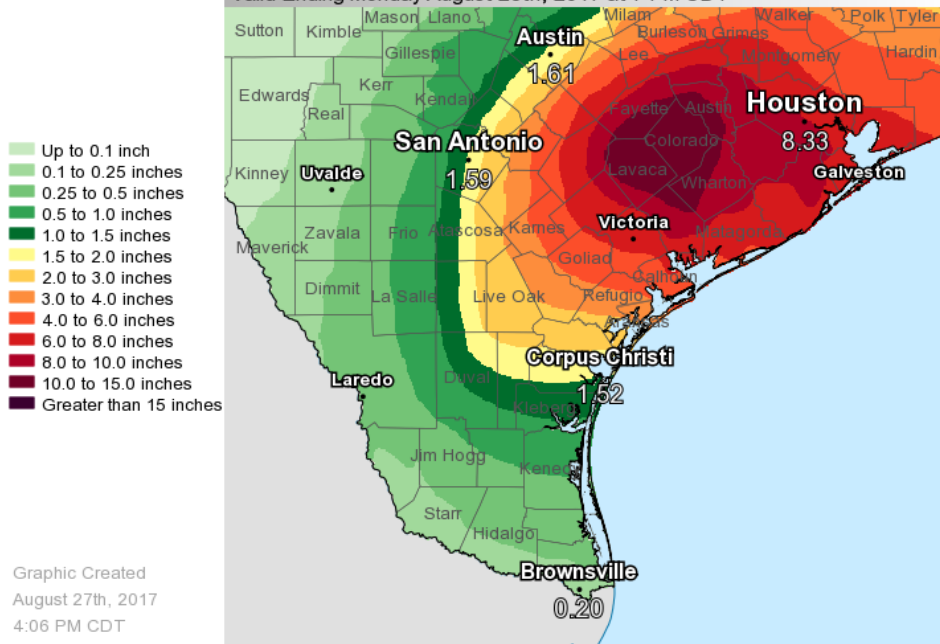


Corpus Christi

WEATHER FORECAST OFFICE

Harvey

Valid Ending Monday August 28th, 2017 at 7 PM CDT



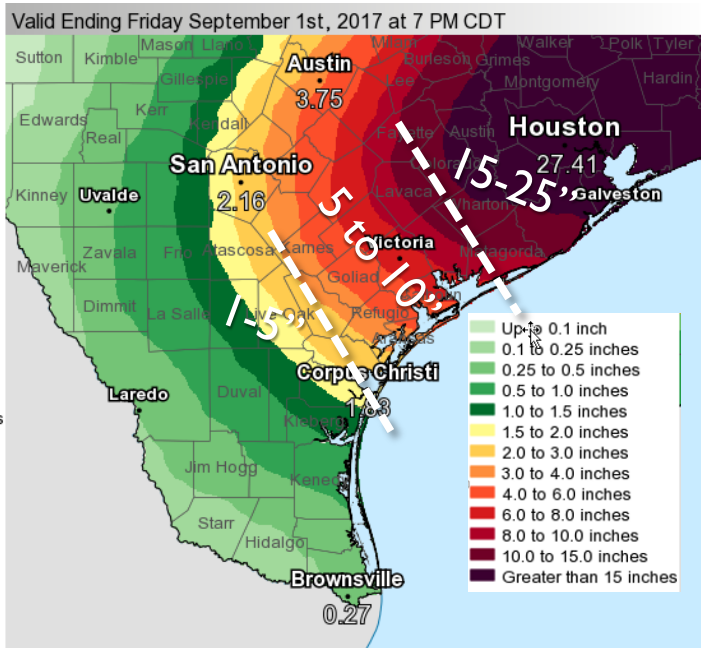
Graphic Created
August 27th, 2017
4:06 PM CDT

Forecast Rainfall Totals thru Friday

Life-Threatening, Catastrophic Flooding is Expected!



Corpus Christi
WEATHER FORECAST OFFICE



Graphic Created
August 27th, 2017
4:08 PM CDT

- Rainfall totals of 5-10", isolated higher amounts through the end of the week
- Isolated +50" amounts (mainly Houston area)

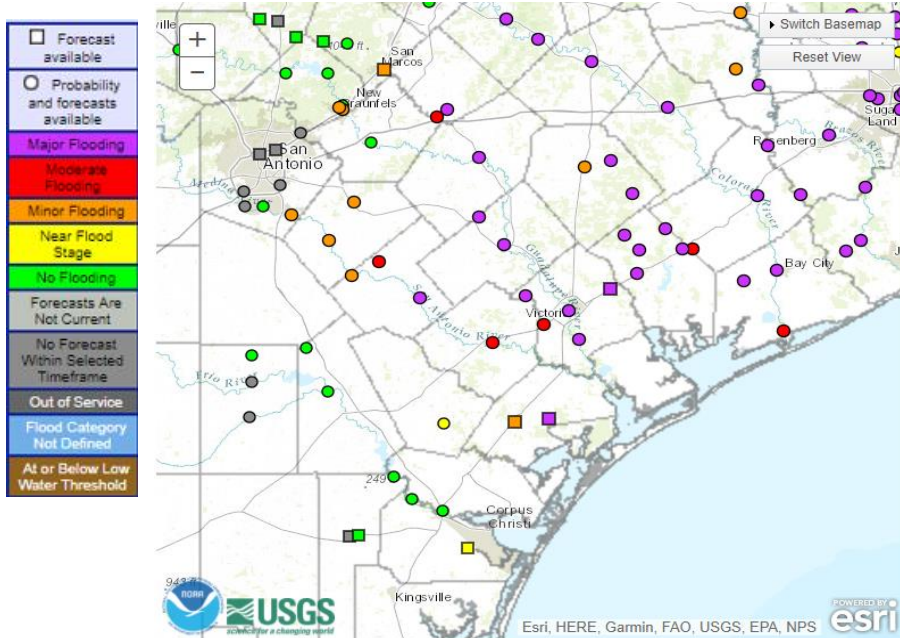


River Flooding

Based on observed and forecast rainfall for next 72 hours



Corpus Christi
WEATHER FORECAST OFFICE



Still Forecasting Major Flooding on Garcitas Creek, Guadalupe River, Coleto & Copano Creek.

Catastrophic and Life threatening flooding threat still possible for Guadalupe River and Victoria area.

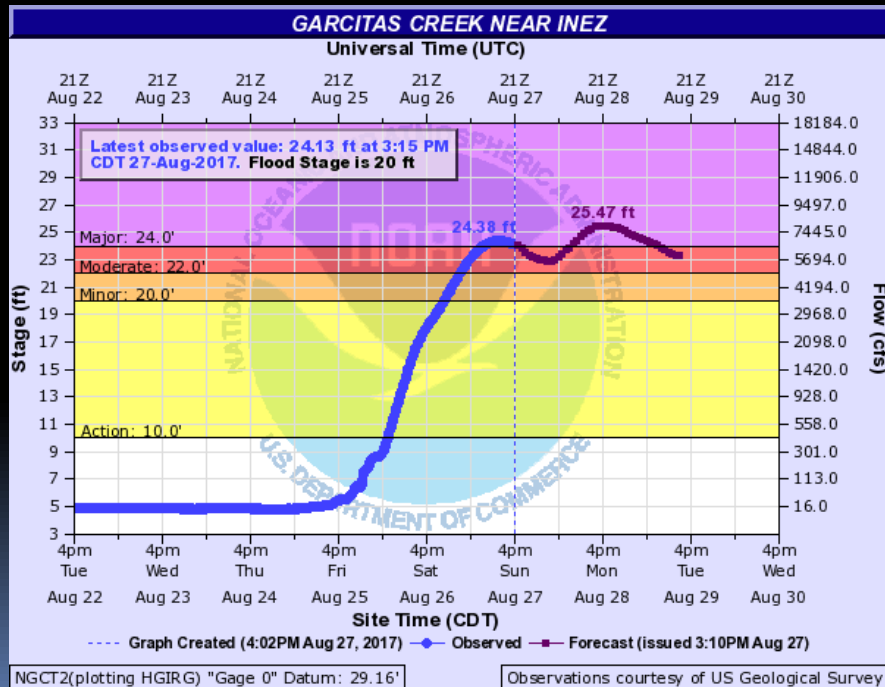
The colored symbols represent the latest forecast river level (not current river level)



Garcitas Creek near Inez

Major Flooding Expected

Forecast/Impacts:



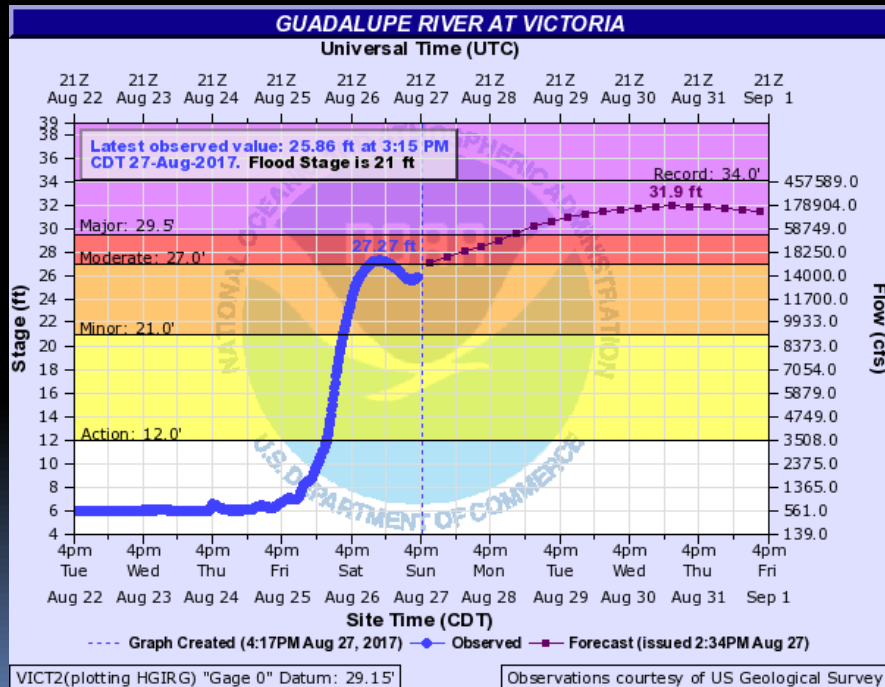
- ❑ Major flooding expected.
- ❑ Crest near 25.5 feet Monday. Additional higher rises possible.
- ❑ At 24 ft., significant crop loss occurs. Areas of pastureland and cattle are cut off. Numerous primary and secondary roads and bridges flood, including the east approach to the Highway 59 access road bridge.



Guadalupe River At Victoria

Major Flooding Expected

Forecast/Impacts:



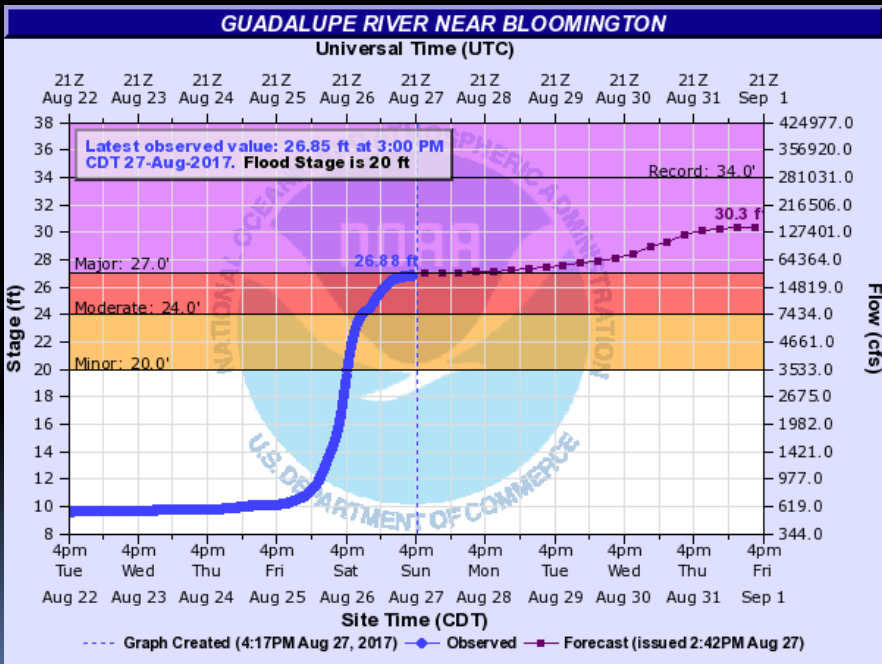
- ❑ Major flooding expected
- ❑ Crest around 32 feet starting late Wednesday/early Thursday.
- ❑ At 31 ft, 40 square block of Greens Addition Subdivision are generally flooded. Areas west of Moody Street between Water Street and Constitution Street flood and access may be limited, including homes near Club Westerner. Much of the flood plain below the confluence is flooded several miles wide.



Guadalupe River Near Bloomington

Major Flooding Expected

Forecast/Impacts:



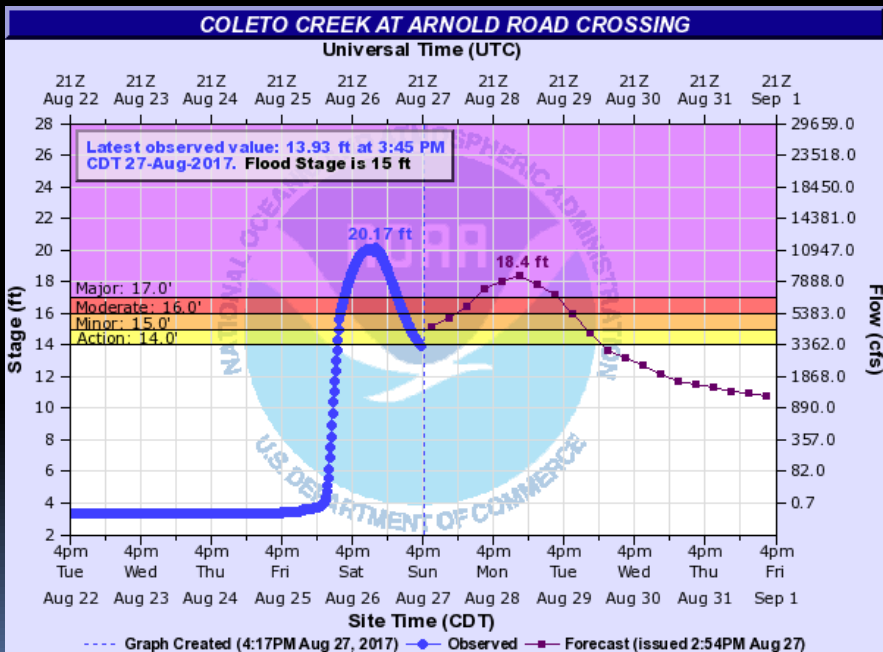
- Major flooding expected
- Continue rising to near 30 feet by Friday. Higher rises possible!
- At 28 ft, water approaches the levees near the San Antonio River confluence. Miles of Highway 35 and the flood plain near it flood, cutting off many homes and flooding a fishing camp near Tivoli. Livestock are cut off and may drown.



Coletto Creek at Arnold Road Crossing

Major Flooding Occurring

Forecast/Impacts:



- ❑ Major flooding occurring with another rise starting tonight.
- ❑ Crest around 18.5 feet late Monday/early Tuesday.
- ❑ At 17 feet, livestock are cut off. Roads and bridges near the river are flooded and dangerous

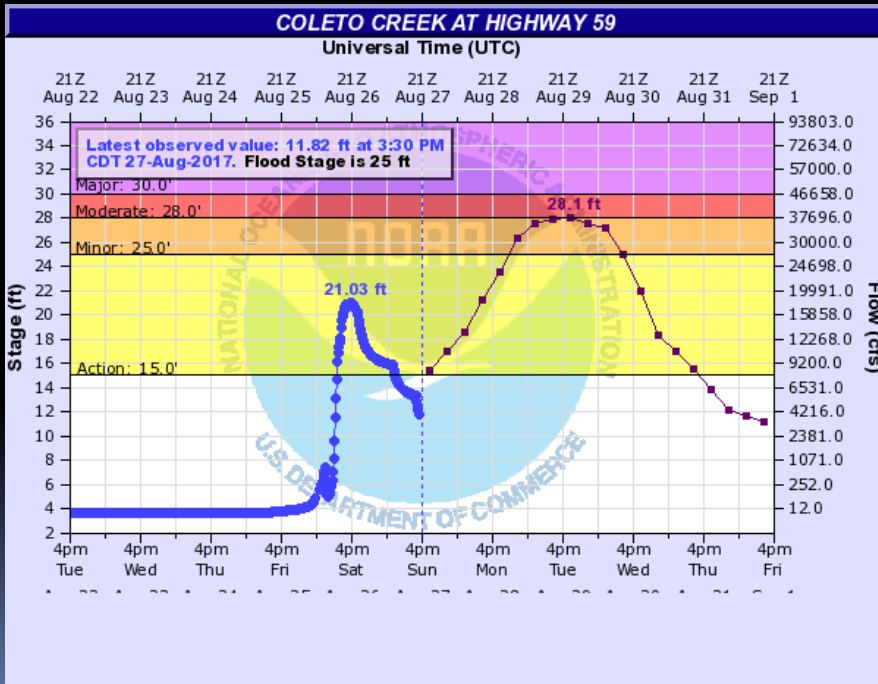


Coletto Creek at Highway 59

Moderate Flooding Expected

Forecast/Impacts:

- ❑ Moderate flooding expected (based on anticipated releases from Coletto Creek AND basin rainfall)
- ❑ Crest near 28 feet Tuesday
- ❑ At 28 ft, flooding of secondary roads and low bridges occurs. Livestock in the flood plain are threatened.

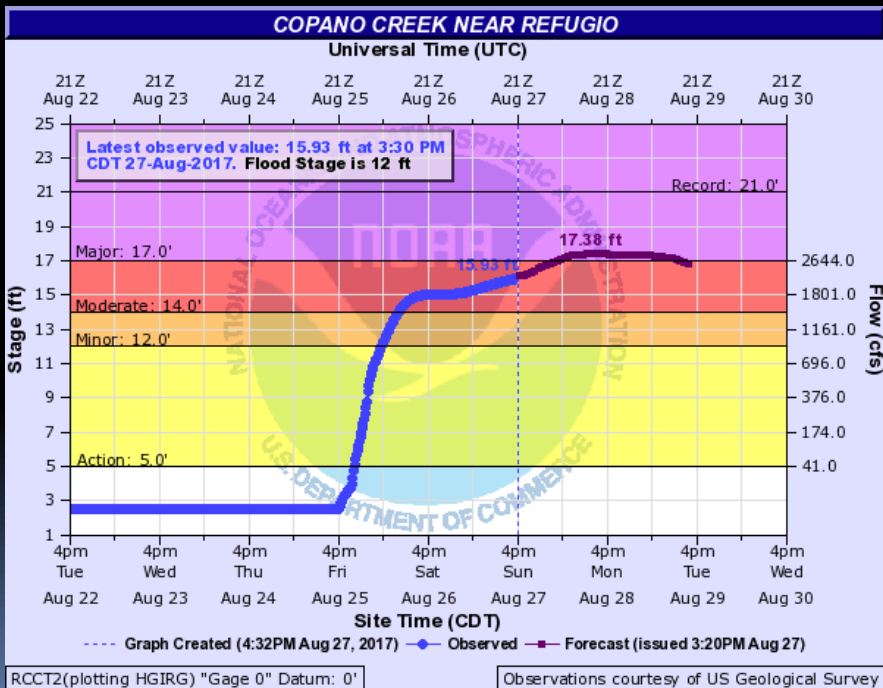




Copano Creek Near Refugio

Major Flooding Expected

Forecast/Impacts:



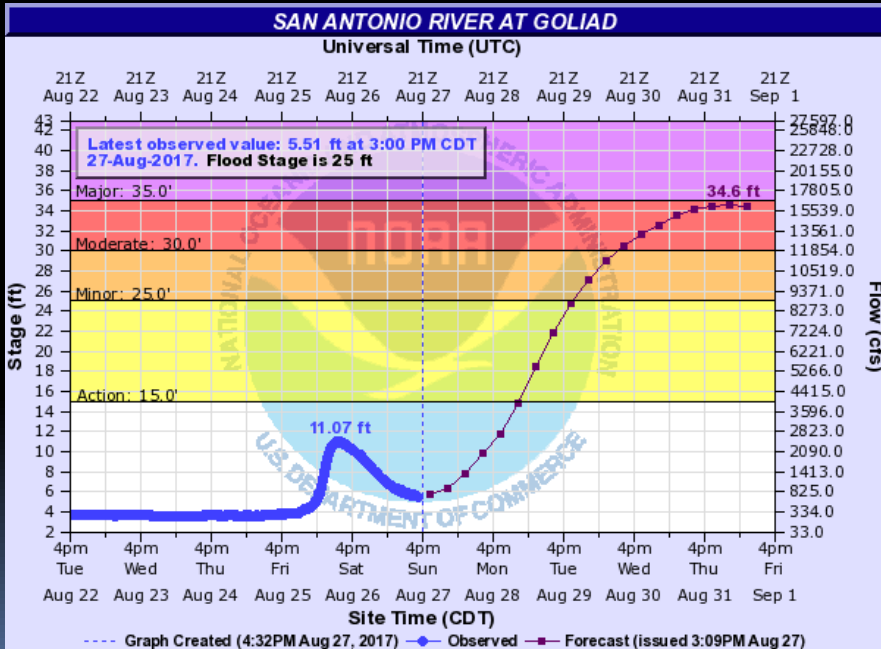
- ❑ Major flooding expected
- ❑ Crest around 17 feet starting Monday morning. Additional higher rises possible, depending on Harvey's track.
- ❑ At 17 feet, the river is 200 yards wide at the Farm to Market 774 bridge.



San Antonio River At Goliad

Moderate Flooding Expected

Forecast/Impacts:



- ❑ Moderate flooding expected
- ❑ Crest near 34.6 feet Thursday.
- ❑ At 33-35 ft, roads, many camp sites, RV and temporary shelter sites in Goliad State Park flood. Hundreds of livestock downstream of the flood plain are cut off and may drown.



Hydrologic Briefing Tropical Storm Harvey

Next Update: 10:30 pm
Sunday, August 27, 2017