



# HURRICANE HARVEY BRIEFING

7:30 AM CDT  
Friday, August 25, 2017

Prepared by:  
Lara Beal





- Life-threatening conditions continue.
- Harvey is slowly weakening and is now a Category 1 hurricane with max sustained winds of 80 mph. Hurricane warnings are still in effect.
- Peak Storm Surge inundation is has peaked or is peaking now, but still remains across portions of the region, and the Storm Surge Warning remains in effect.



- Transitioning to a prolonged, heavy rainfall event over next several days.
- Catastrophic & life-threatening flooding with 20-30” w/isolate 40” totals east of Rockport to Goliad line. Lesser but still significant and dangerous amounts SW of the line.
- Rises to major flood stage anticipated along rivers.

# Current Radar View



Corpus Christi  
WEATHER FORECAST OFFICE

Hurricane Harvey

## Current Conditions

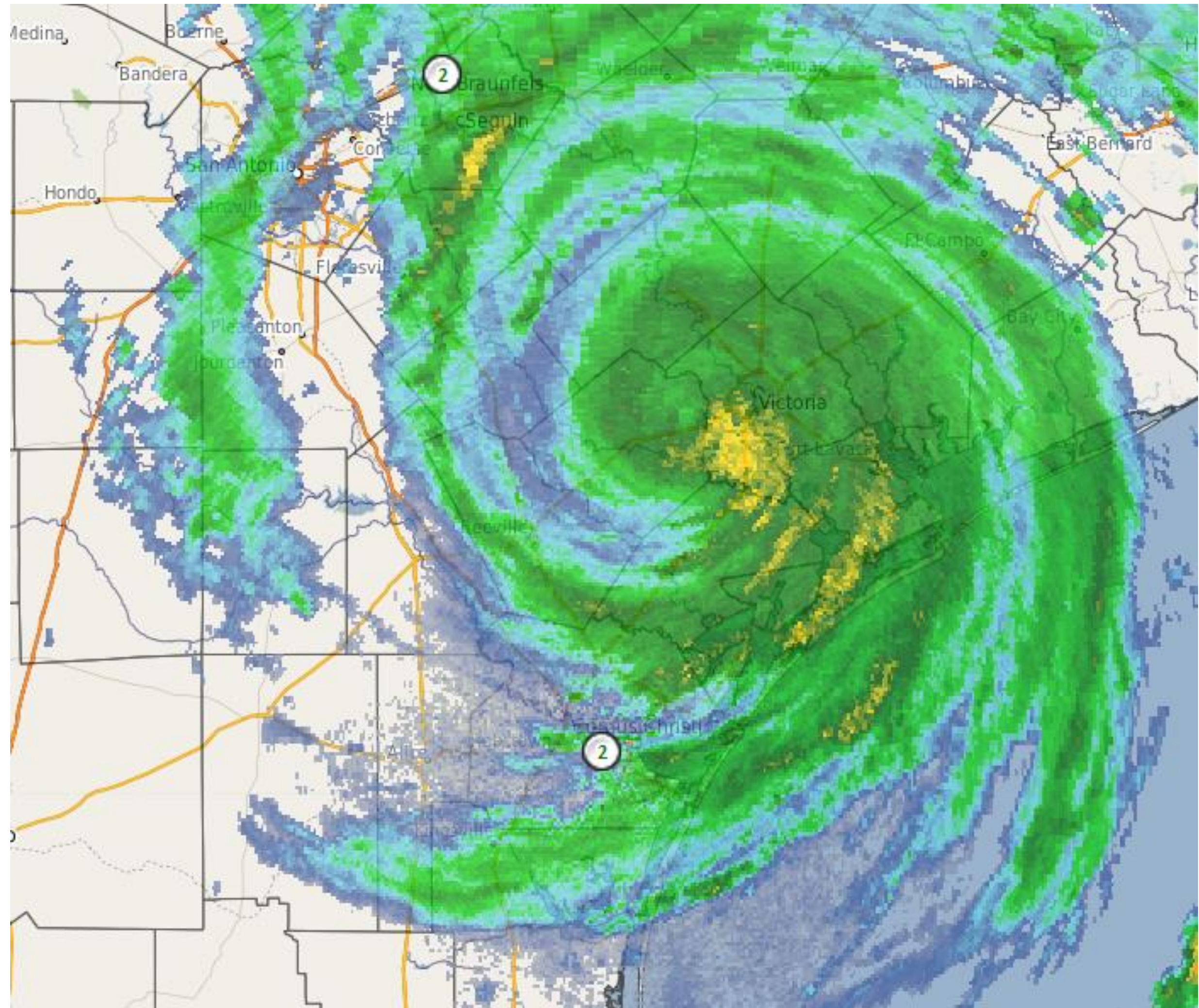
Winds: 80 mph

Motion: NNW at 6  
mph

Pressure: 975

Category: I

Center Position: 20  
miles SW of Victoria





# Overview

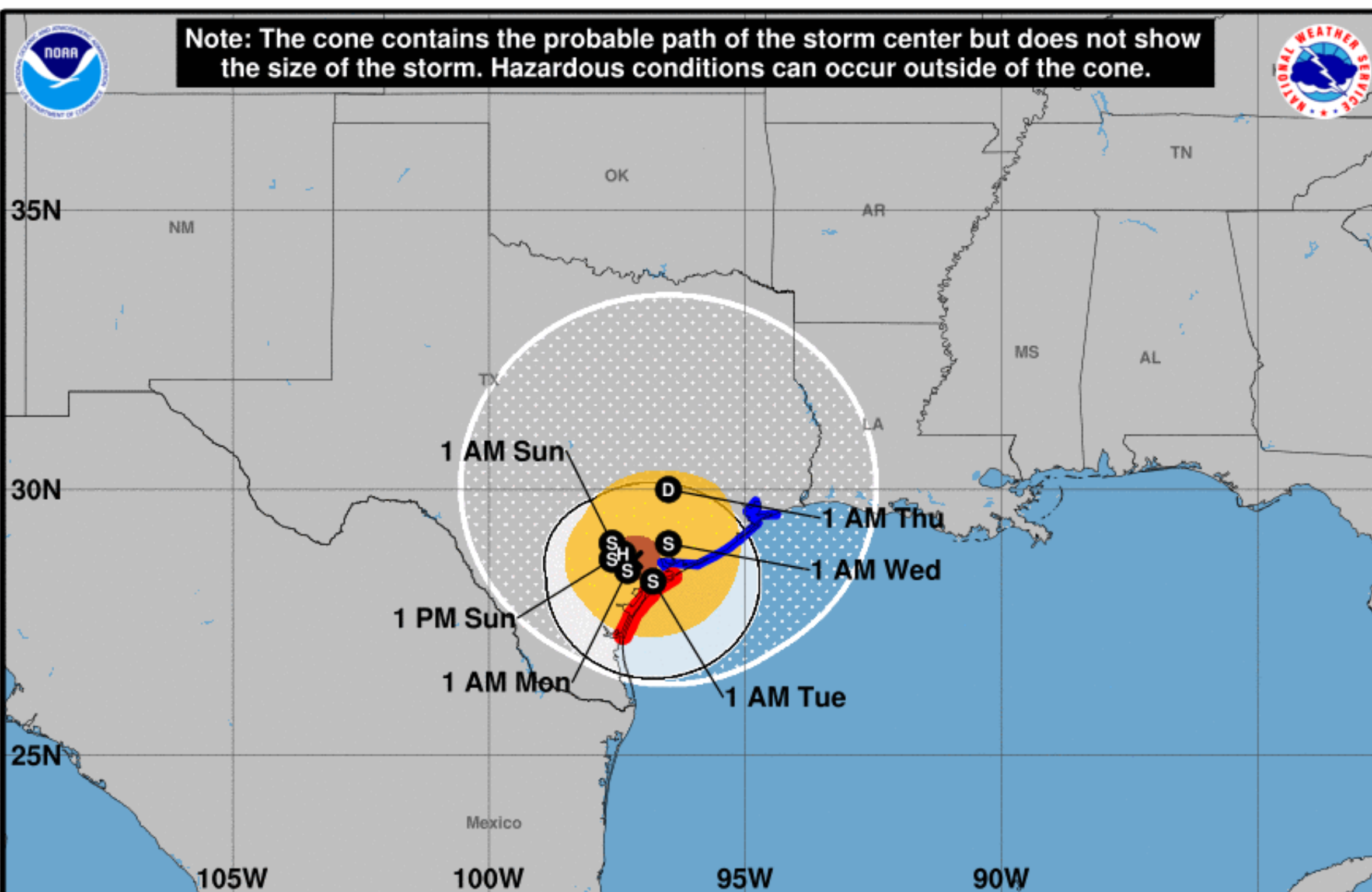


Corpus Christi

WEATHER FORECAST OFFICE

## Hurricane Harvey

Note: The cone contains the probable path of the storm center but does not show the size of the storm. Hazardous conditions can occur outside of the cone.



<b>Hurricane Harvey</b> Saturday August 26, 2017 7 AM CDT Intermediate Advisory 24A NWS National Hurricane Center	<b>Current information: x</b> Center location 28.7 N 97.2 W Maximum sustained wind 80 mph Movement NNW at 6 mph	<b>Forecast positions:</b> ● Tropical Cyclone ○ Post/Potential TC Sustained winds: D < 39 mph S 39-73 mph H 74-110 mph M > 110 mph	
<b>Potential track area:</b> Day 1-3 (solid line) Day 4-5 (dotted line)	<b>Watches:</b> Hurricane (pink) Trop Stm (yellow)	<b>Warnings:</b> Hurricane (red) Trop Stm (blue)	<b>Current wind extent:</b> Hurricane (red) Trop Stm (yellow)

- Harvey now a Cat. 1 hurricane with max sustained winds of 80 mph
- Winds will continue to weaken, and Harvey is likely to become a tropical storm later today.
- Harvey is forecast to meander over the region, maintaining tropical storm winds along portions of the region through at least Sunday.

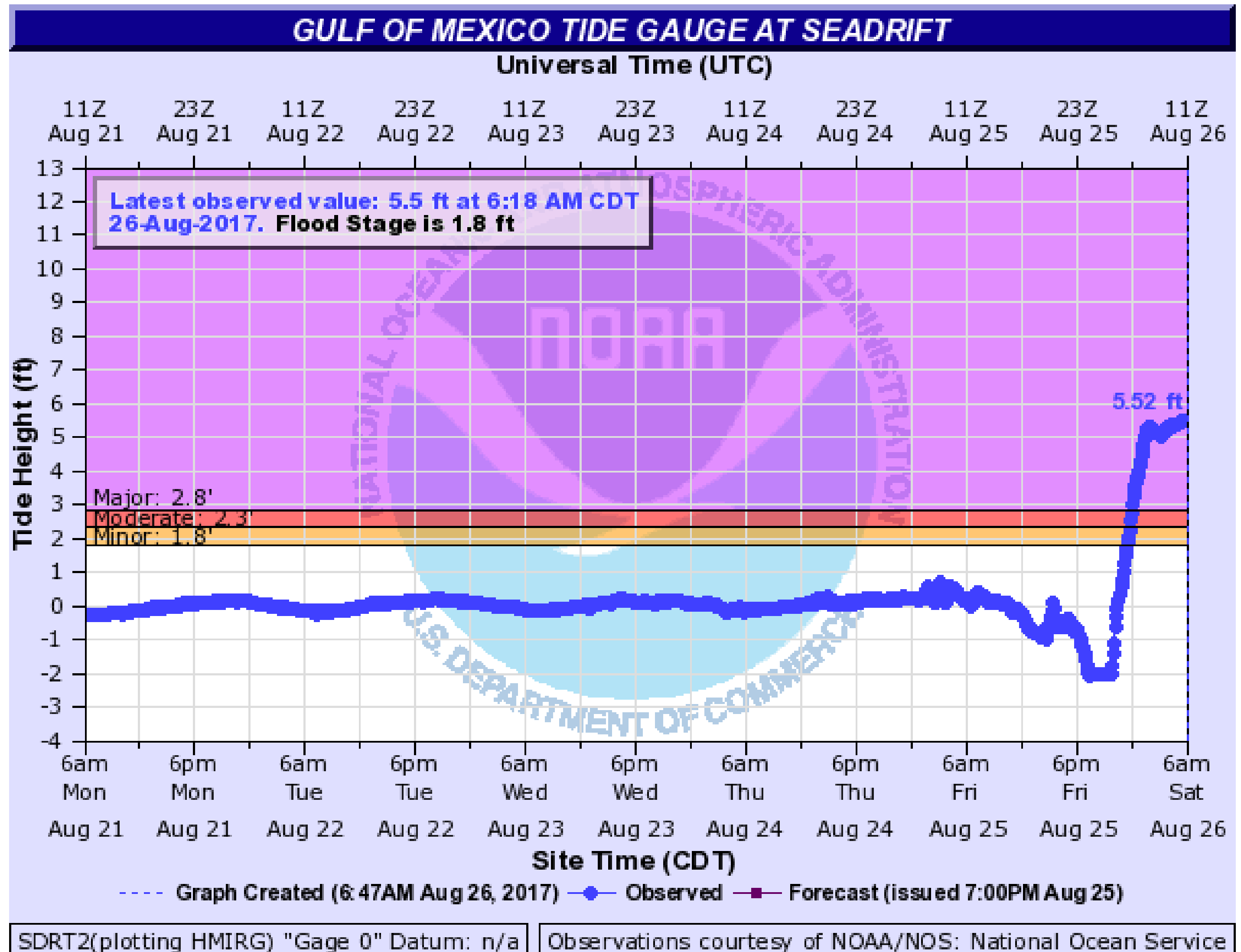
# Storm Surge Observations



Corpus Christi  
WEATHER FORECAST OFFICE

Hurricane Harvey

## Seadrift



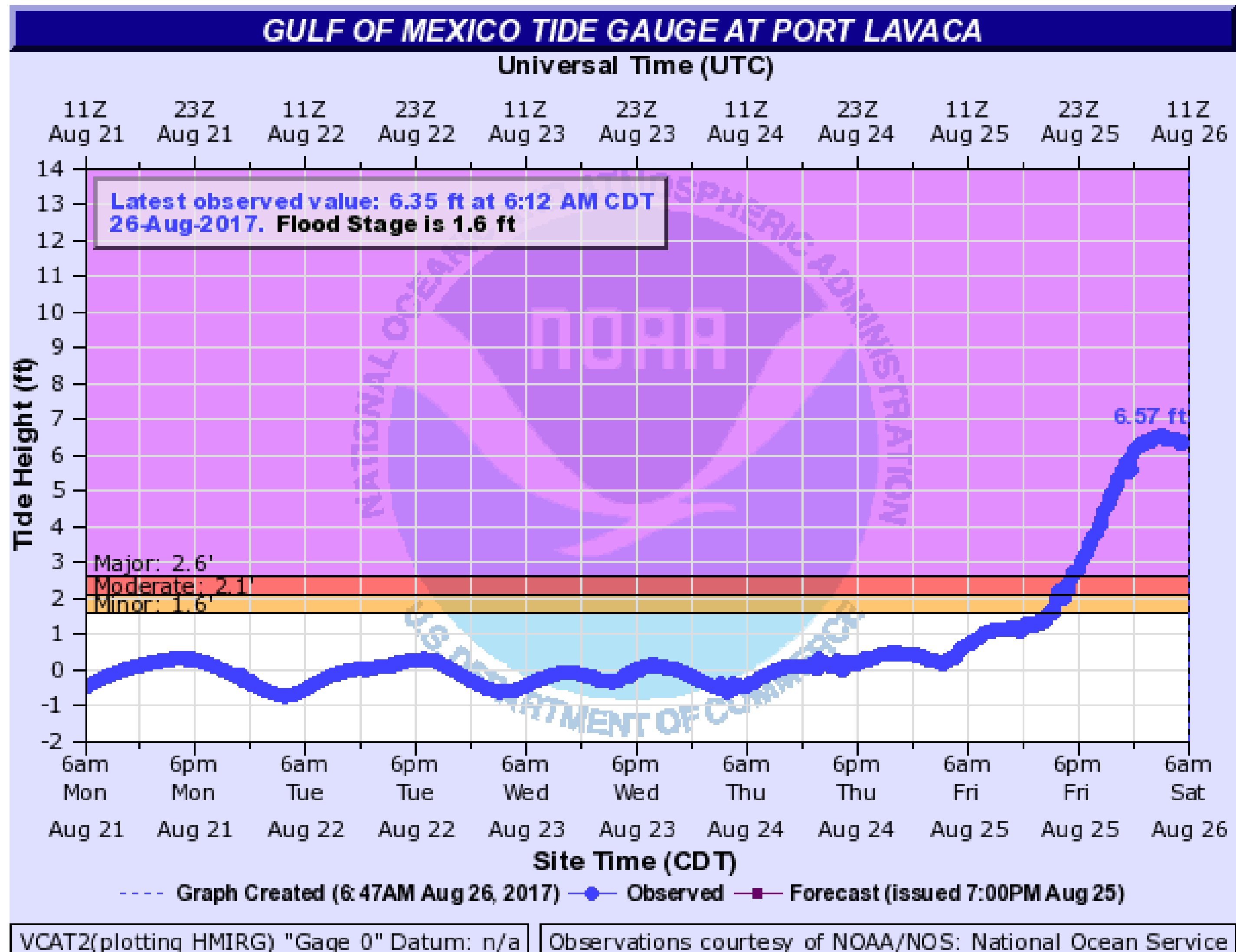
# Storm Surge Observations



Corpus Christi  
WEATHER FORECAST OFFICE

Hurricane Harvey

## Port Lavaca





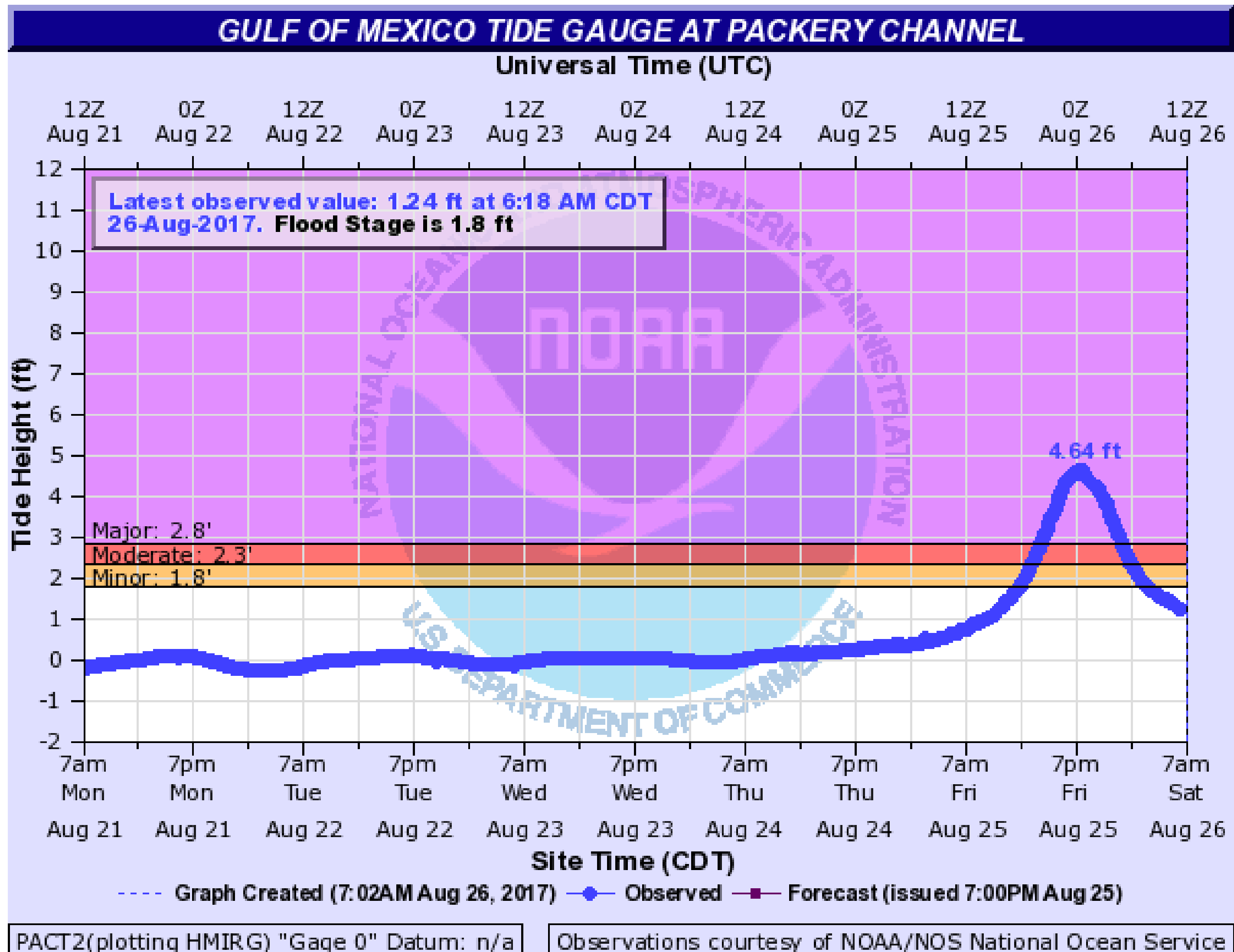
# Storm Surge Observations



Corpus Christi  
WEATHER FORECAST OFFICE

Hurricane Harvey

## Packery Channel



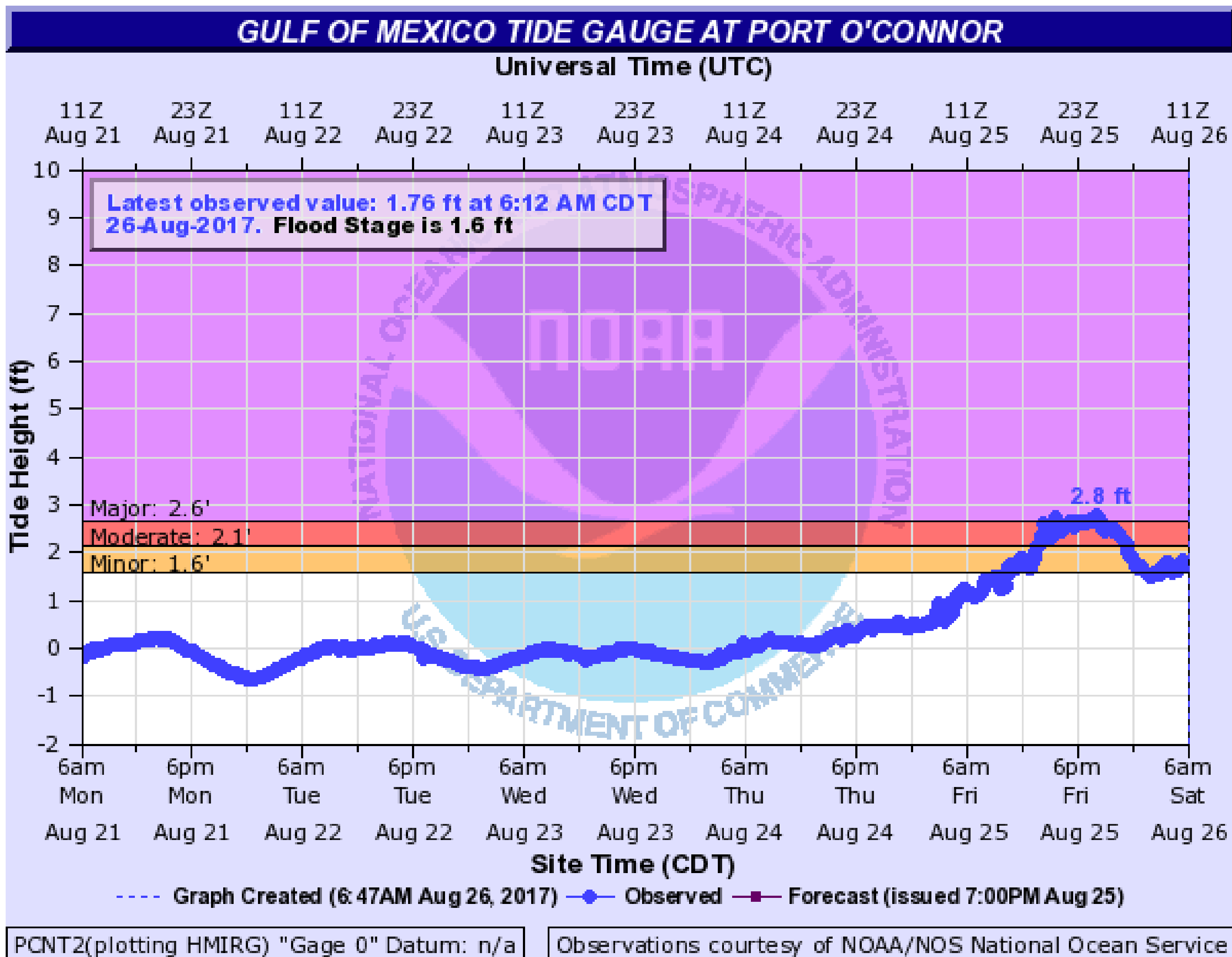
# Storm Surge Observations



Corpus Christi  
WEATHER FORECAST OFFICE

Hurricane Harvey

## Port O'Connor

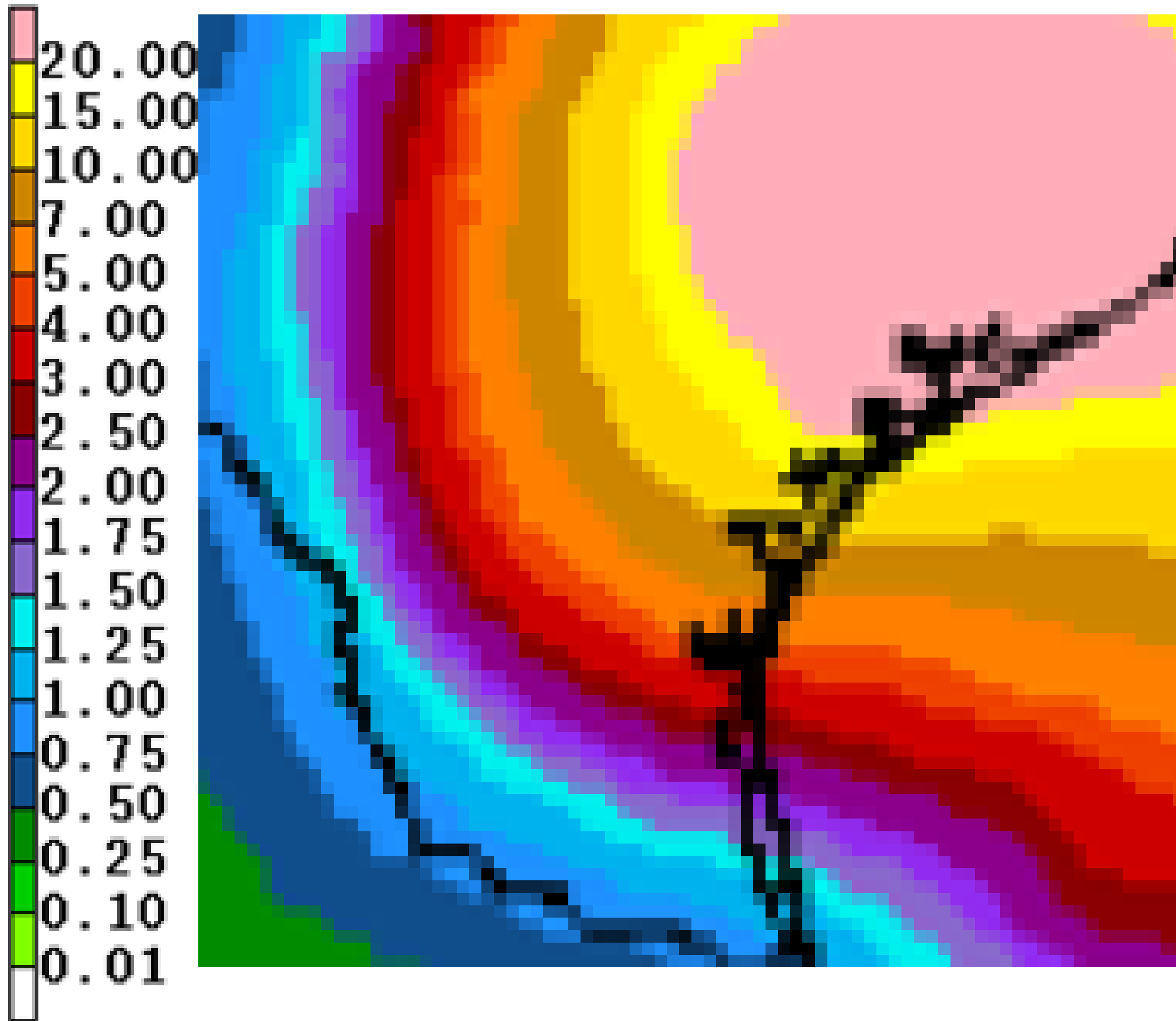


# Forecast Rainfall Totals



Corpus Christi  
WEATHER FORECAST OFFICE

Hurricane Harvey



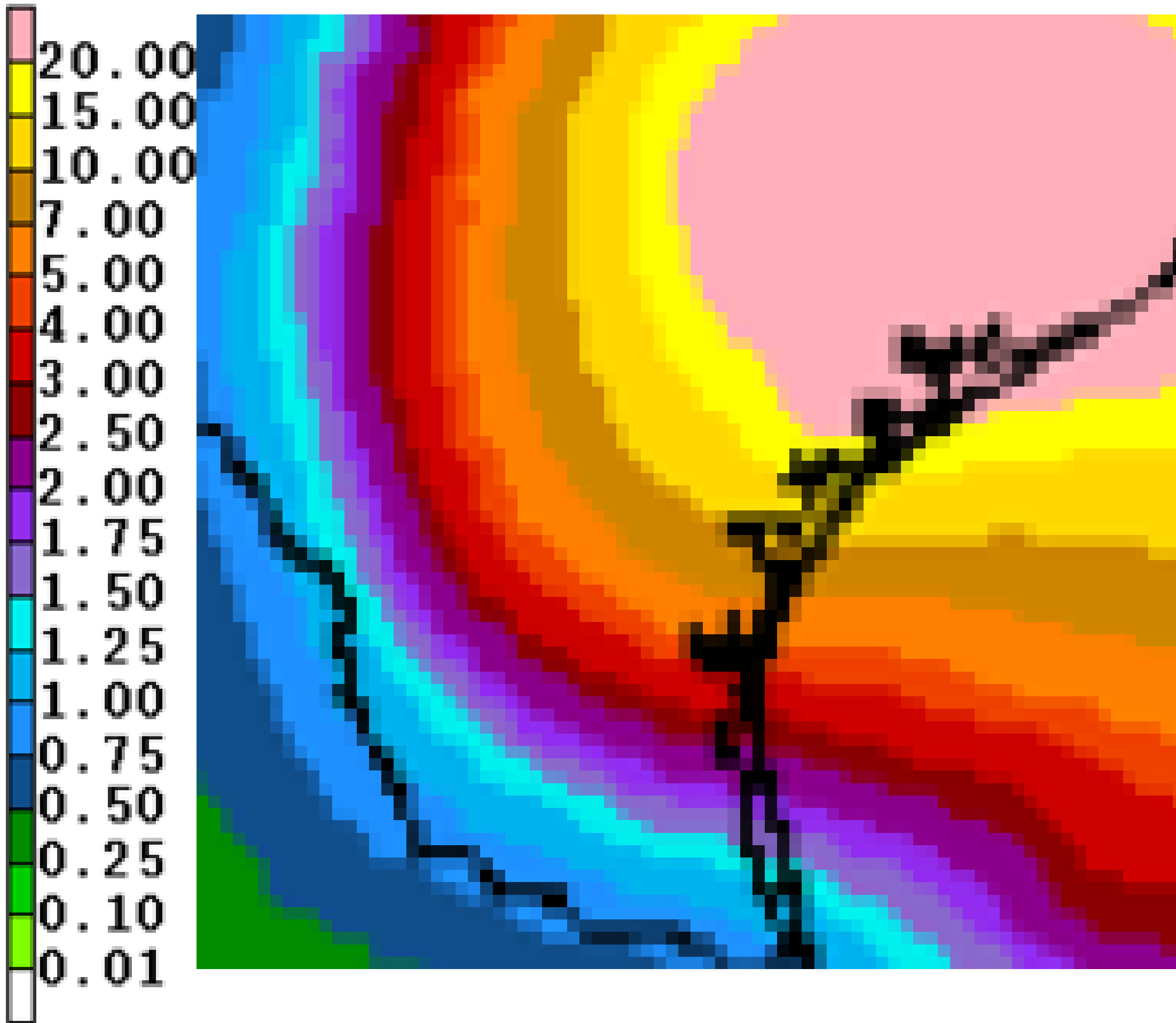
- A prolonged, heavy rainfall event is forecast to unfold as Harvey meanders around South Texas over the next several days. **Life-threatening, catastrophic flooding expected through Tuesday.**
- Storm total rainfall amounts of 20-30" with isolated 40" amounts will be possible NE of a line from Rockport to Goliad. This includes the city of Victoria.

# Forecast Rainfall Totals



Corpus Christi  
WEATHER FORECAST OFFICE

Hurricane Harvey



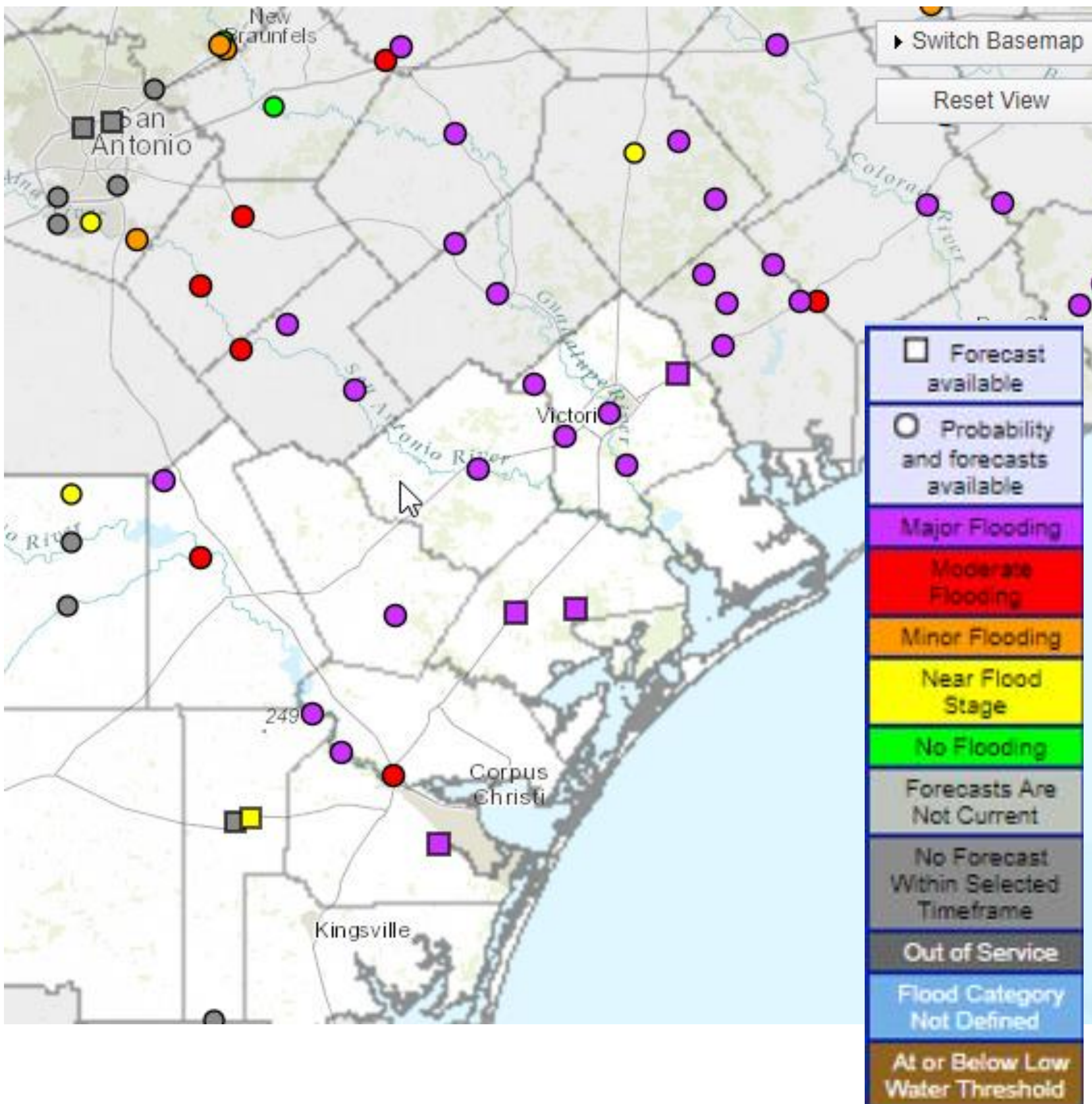
- To the SW of the Rockport to Goliad line, 5 to 15 inches of rain will be possible. This includes the city of Corpus Christi.
- Locally higher amounts will be possible across the region.
- Rainfall amounts will drop off significantly west of HWY 15, generally less than 5 inches.
- **Flash Flood Watch in Effect**

# River Flooding

Continued Rains from Harvey



Corpus Christi  
WEATHER FORECAST OFFICE



- Most rivers across the Victoria Crossroads and Coastal Bend forecast to reach Major flood stage within the next several days
- Catastrophic & life threatening flooding expected



- Harvey is now a Category I hurricane. Hurricane warnings are still in effect.
- Peak Storm Surge inundation is has peaked or is peaking now, but still remains across portions of the region, and the Storm Surge Warning remains in effect.
- Transitioning to a prolonged, heavy rainfall event over next several days.
- Catastrophic & life-threatening flooding with 20-30” w/isolate 40” totals east of Rockport to Goliad line. Lesser but still significant and dangerous amounts SW of the line.
- Rises to major flood stage anticipated along rivers.



# HURRICANE HARVEY BRIEFING

*Next update 10:15 AM Saturday*

*You can get the latest graphics and information on this storm at [www.hurricanes.gov](http://www.hurricanes.gov)*



NWSCorpus

[www.weather.gov/CorpusChristi](http://www.weather.gov/CorpusChristi)