



HURRICANE HARVEY BRIEFING

5 AM CDT
Friday, August 25, 2017

Prepared by:
Lara Beal





- Life-threatening conditions continue.
- Harvey is slowly weakening and is now a Category 1 hurricane with max sustained winds of 90 mph
- Peak Storm Surge inundation 6-12 feet above ground level Port Aransas to Port O'Connor
- Transitioning to a prolonged, heavy rainfall event over next several days.
- Catastrophic & life-threatening flooding with 20-30" w/isolate 40" totals east of Rockport to Goliad line. Lesser but still significant and dangerous amounts SW of the line.

Current Radar View



Corpus Christi
WEATHER FORECAST OFFICE

Hurricane Harvey

Current Conditions

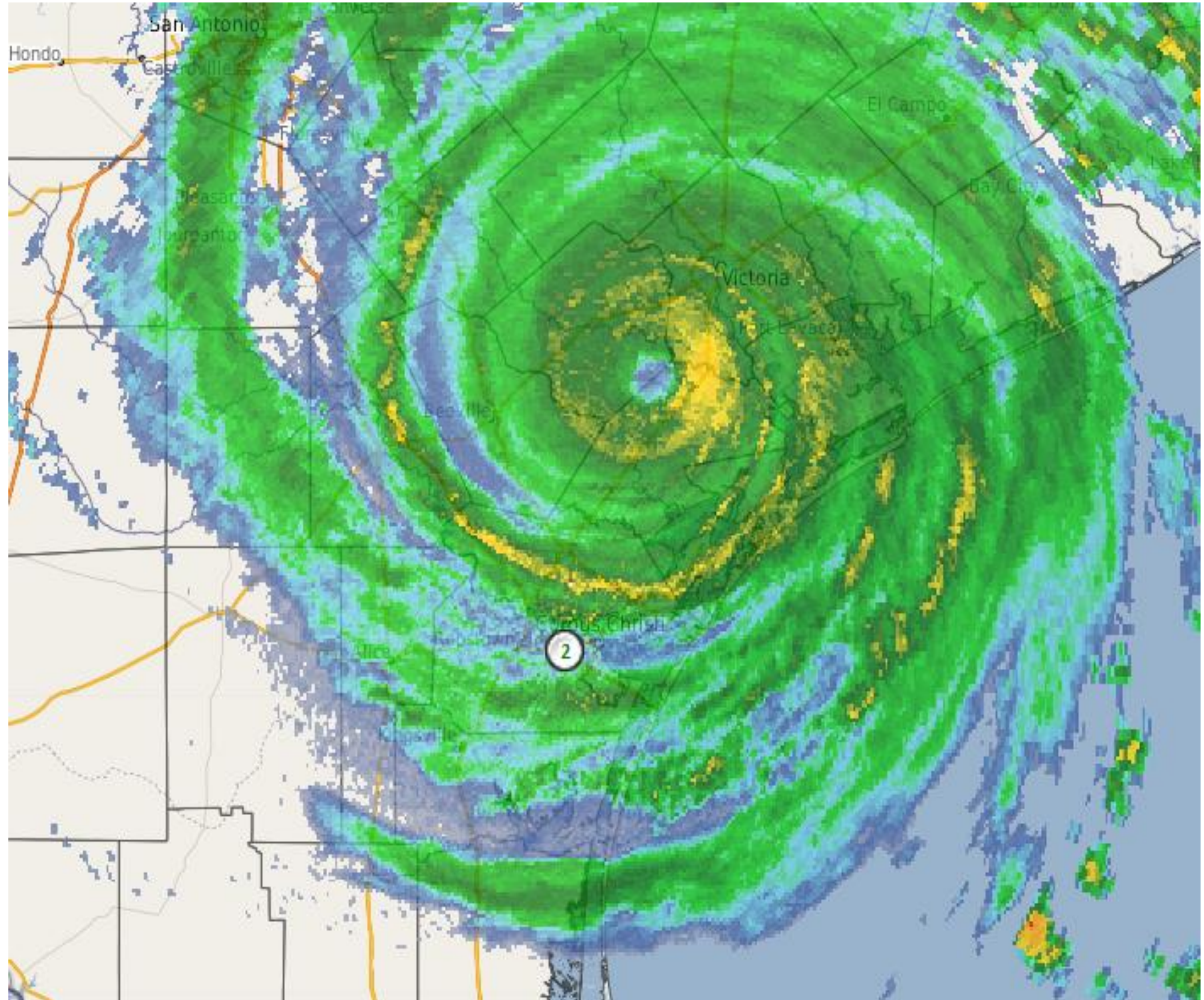
Winds: 90 mph

Motion: NW at 6
mph

Pressure: 967

Category: I

Center Position: 30
miles SW of Victoria



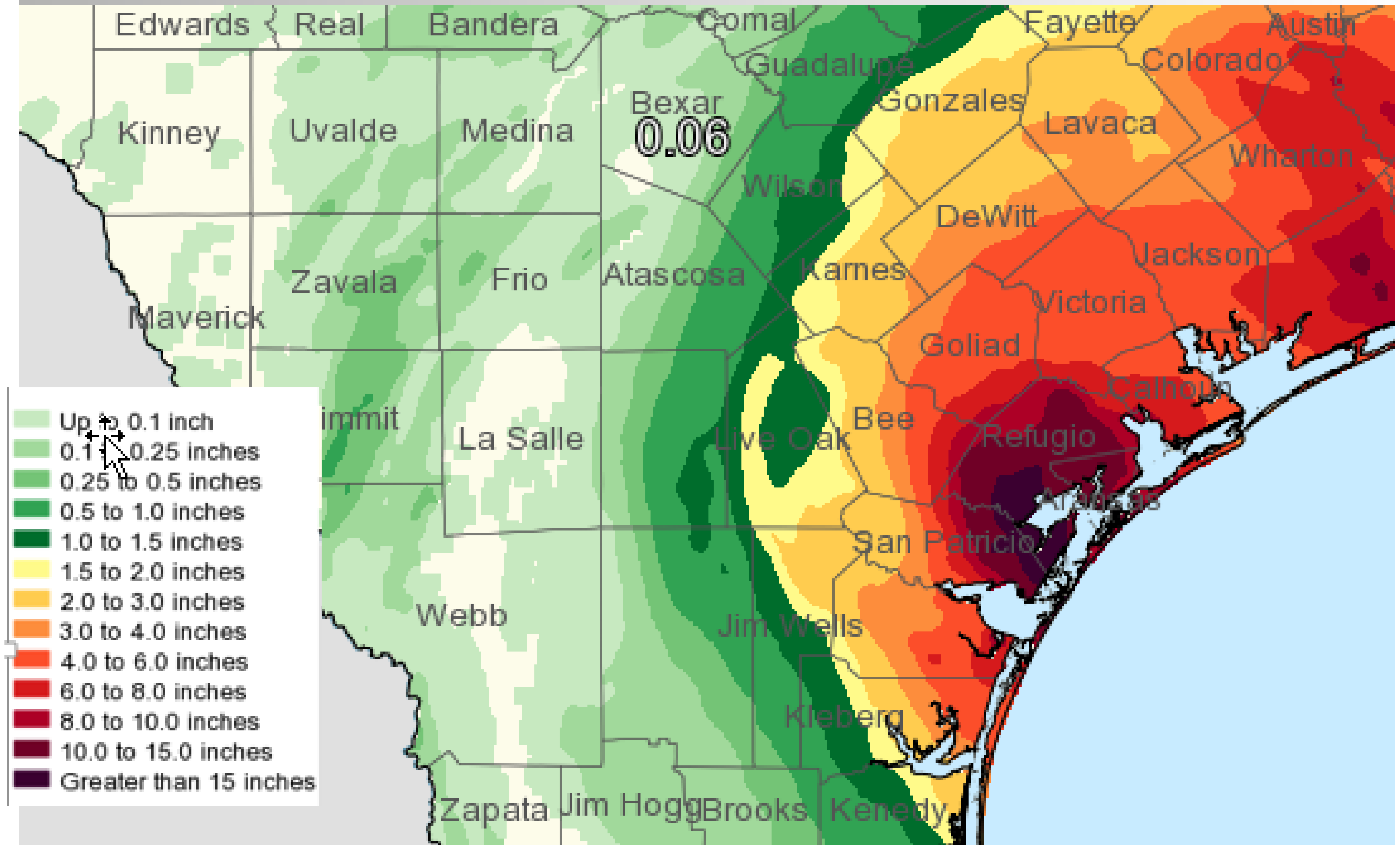
24hr Rainfall Totals through 4 AM



Corpus Christi
WEATHER FORECAST OFFICE

Hurricane Harvey

Valid Ending Saturday August 26th, 2017 at 4 AM CDT

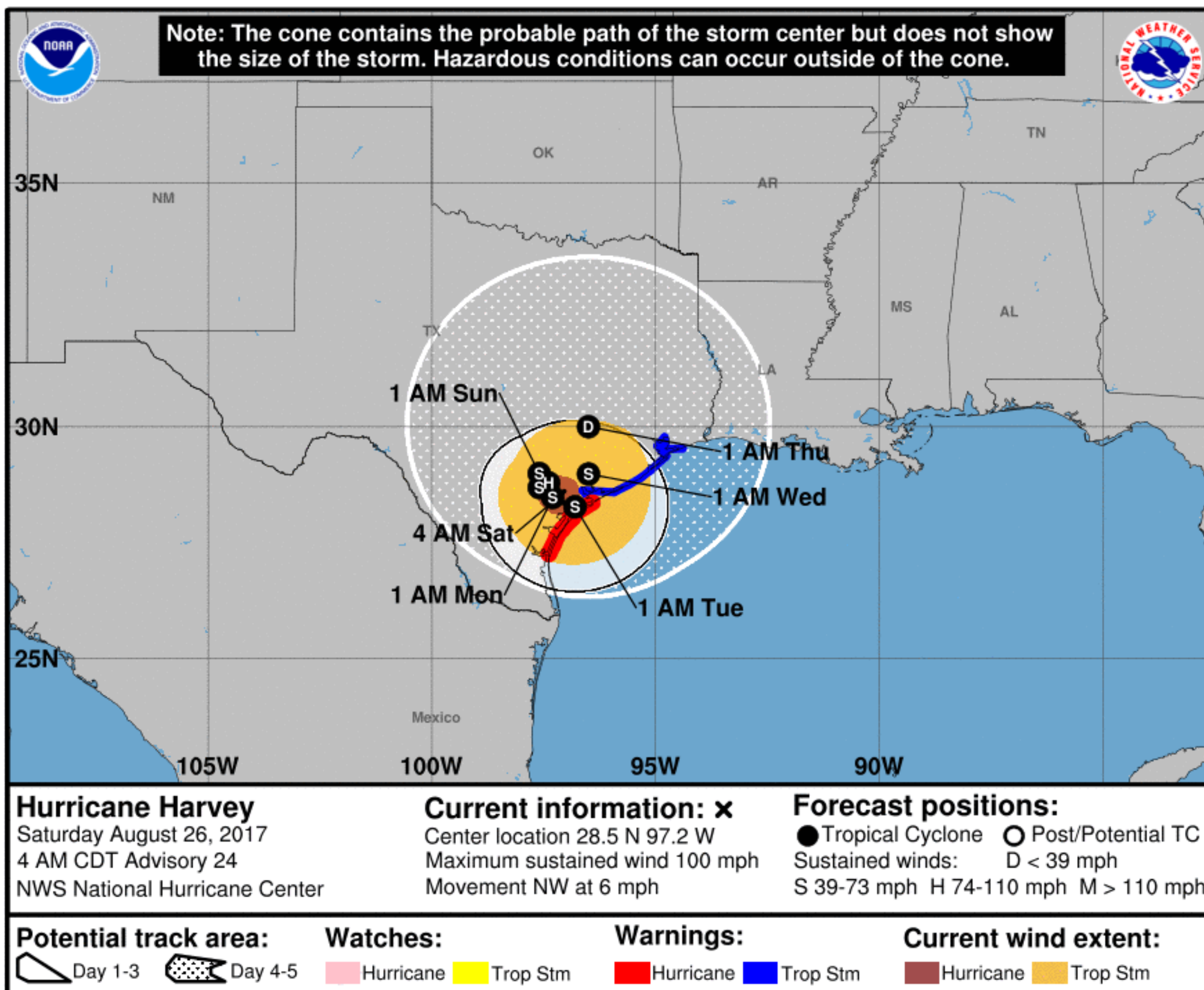


Situation Overview



Corpus Christi
WEATHER FORECAST OFFICE

Hurricane Harvey



- Harvey now a Cat. 1 hurricane with max sustained winds of 90 mph
- Winds will continue to weaken, and Harvey is likely to become a tropical storm later today.
- Harvey is forecast to meander over the region, maintaining tropical storm winds along portions of the region through at least Sunday.

Potential Storm Surge

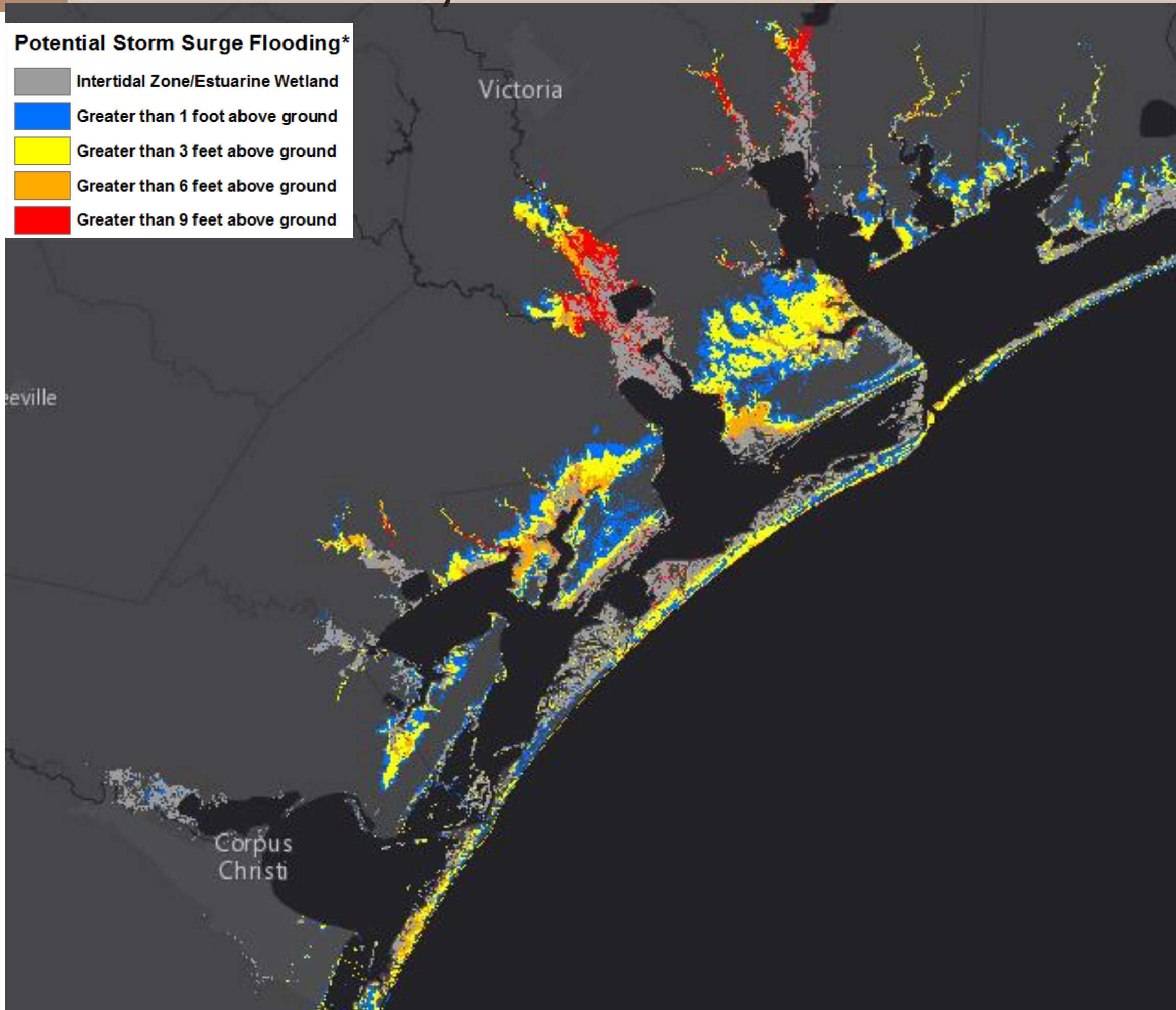


Corpus Christi
WEATHER FORECAST OFFICE

Hurricane Harvey

Potential Storm Surge Flooding*

Grey	Intertidal Zone/Estuarine Wetland
Blue	Greater than 1 foot above ground
Yellow	Greater than 3 feet above ground
Orange	Greater than 6 feet above ground
Red	Greater than 9 feet above ground



Potential storm surge inundation above ground level:

- Port Aransas to Port O'Connor 6 to 12 feet above ground level
- Baffin Bay to Port Aransas 3 to 6 feet above ground level

Reasonable Worst Case Scenario Map

Storm Surge Observations

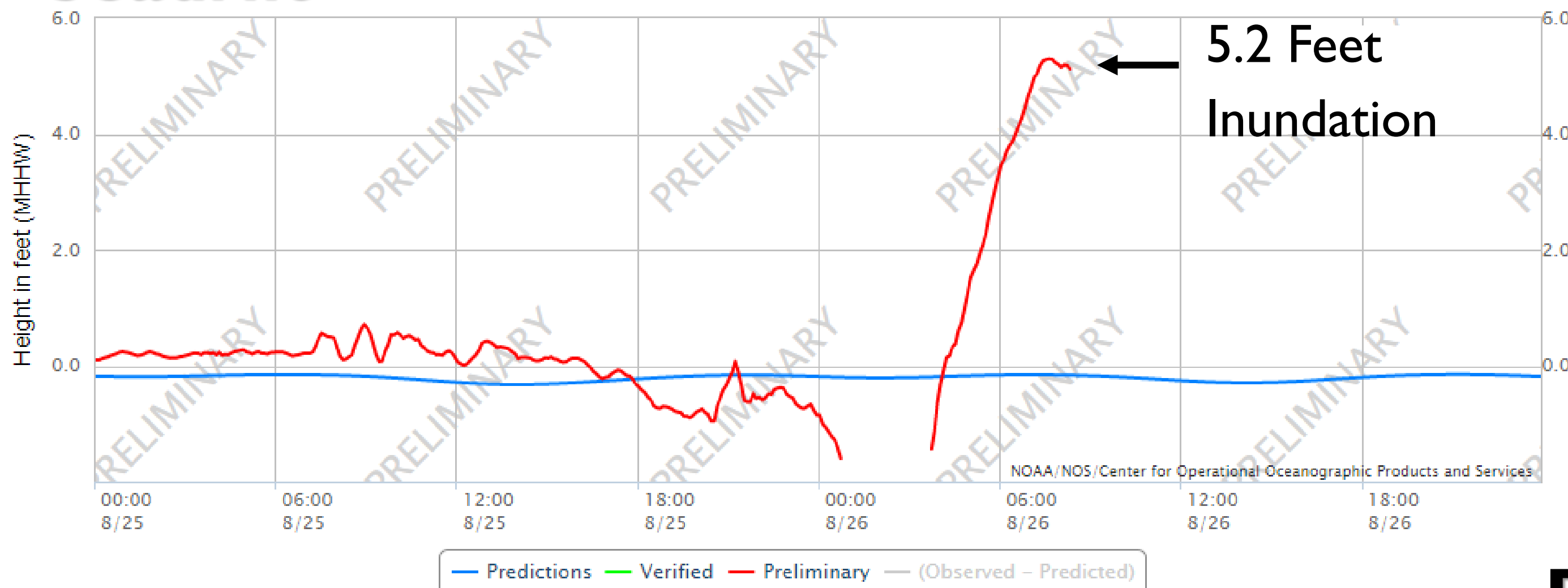


Corpus Christi
WEATHER FORECAST OFFICE

Hurricane Harvey

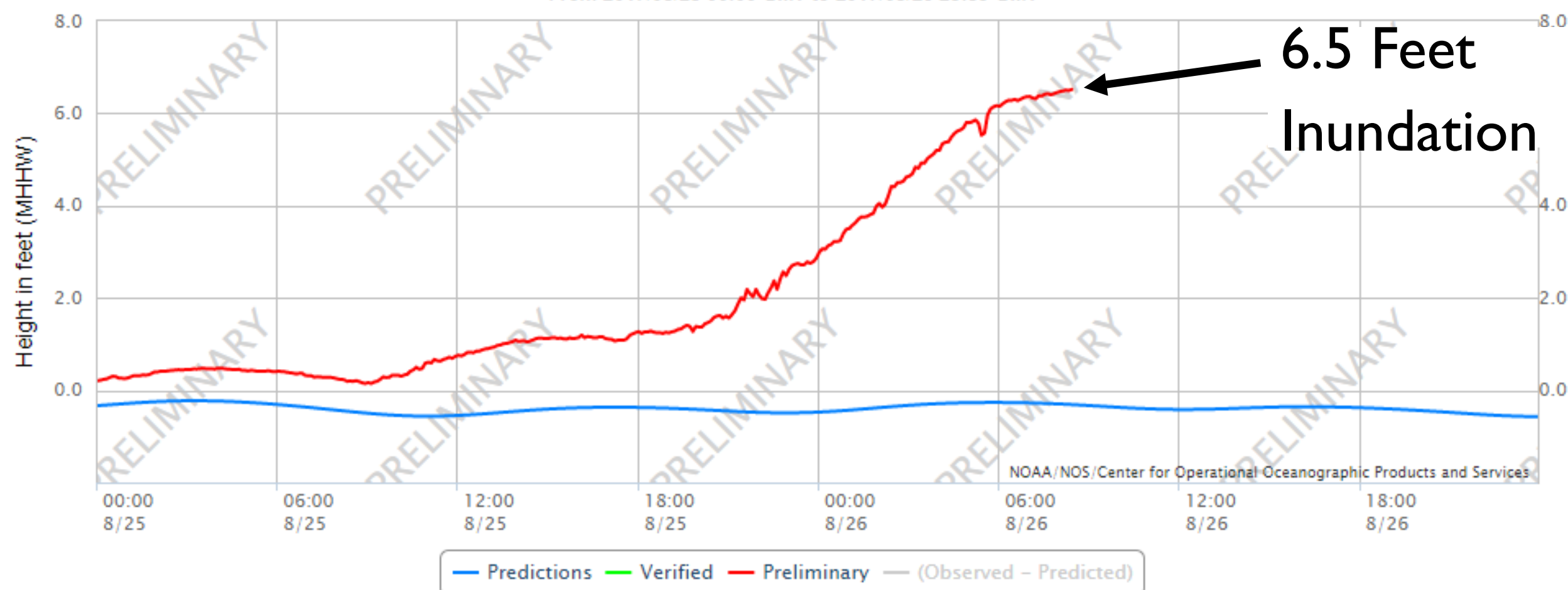
Seadrift

NOAA/NOS/CO-OPS
Observed Water Levels at 8773037, Seadrift TX
From 2017/08/25 00:00 GMT to 2017/08/26 23:59 GMT



Port Lavaca

Observed Water Levels at 8773259, Port Lavaca TX
From 2017/08/25 00:00 GMT to 2017/08/26 23:59 GMT



Storm Surge Observations



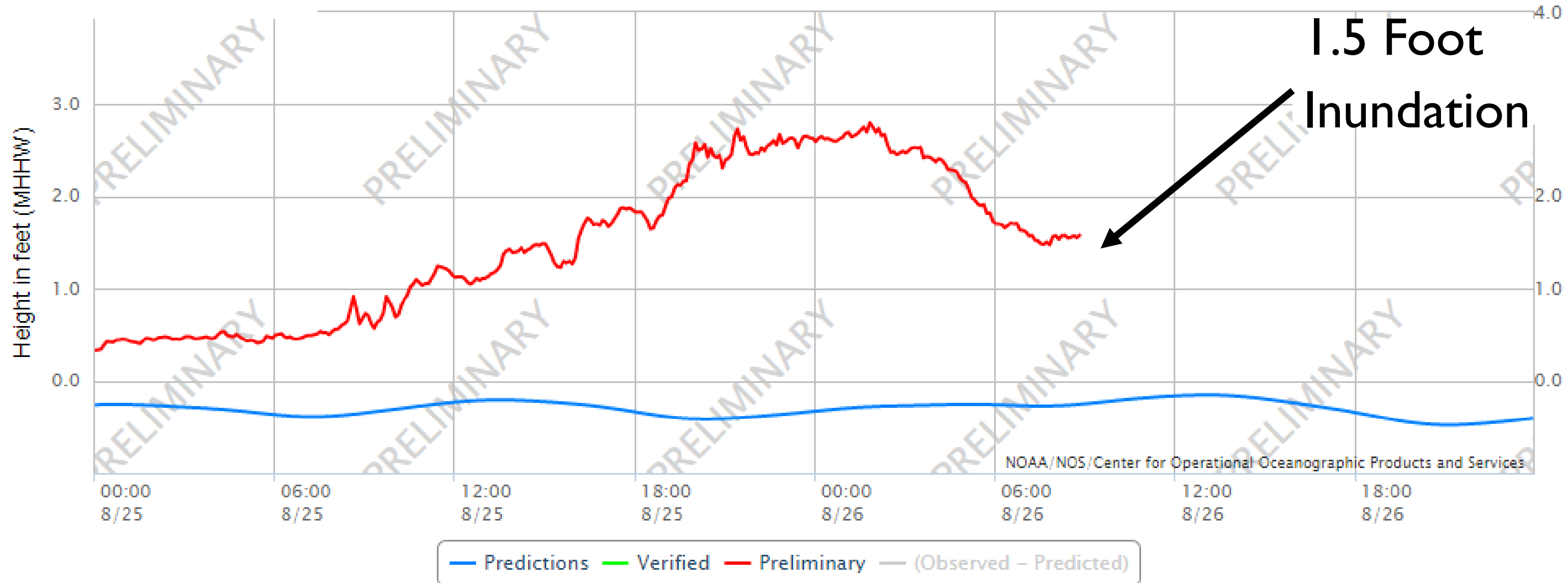
Corpus Christi
WEATHER FORECAST OFFICE

Hurricane Harvey

Port O'Connor

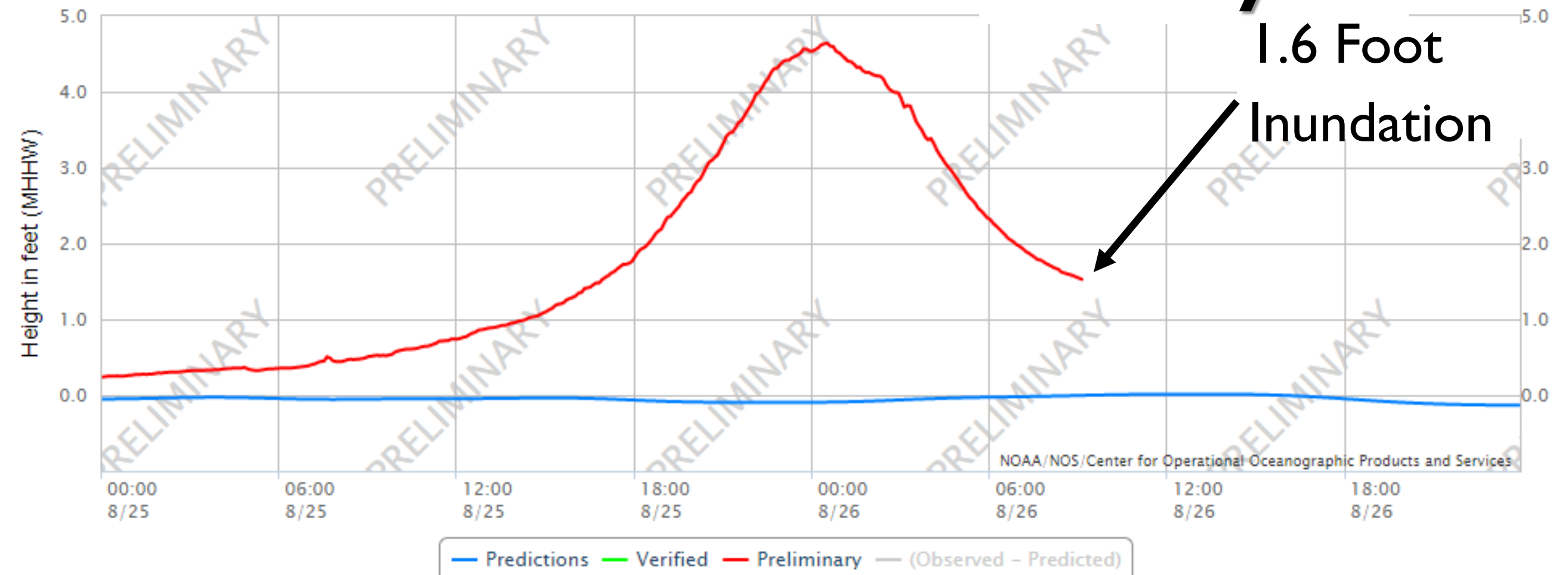
NOAA/NOS/CO-OPS

Observed Water Levels at 8773701, Port OConnor TX
From 2017/08/25 00:00 GMT to 2017/08/26 23:59 GMT



Observed Water Levels at 8775792, Packery Char
From 2017/08/25 00:00 GMT to 2017/08/26 23:59

Packery Channel

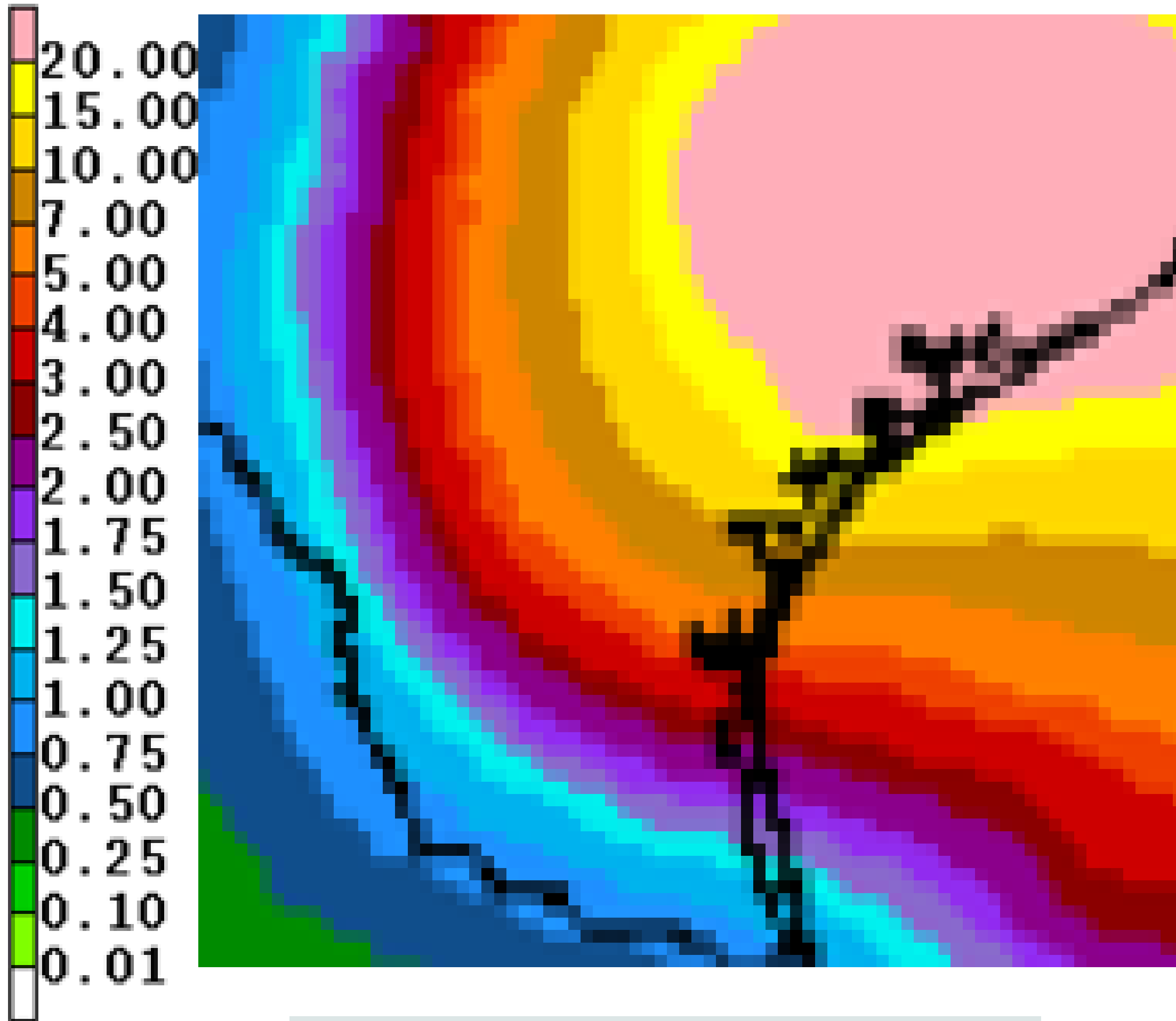


Forecast Rainfall Totals



Corpus Christi
WEATHER FORECAST OFFICE

Hurricane Harvey



Reasonable Worst Case Scenario Map

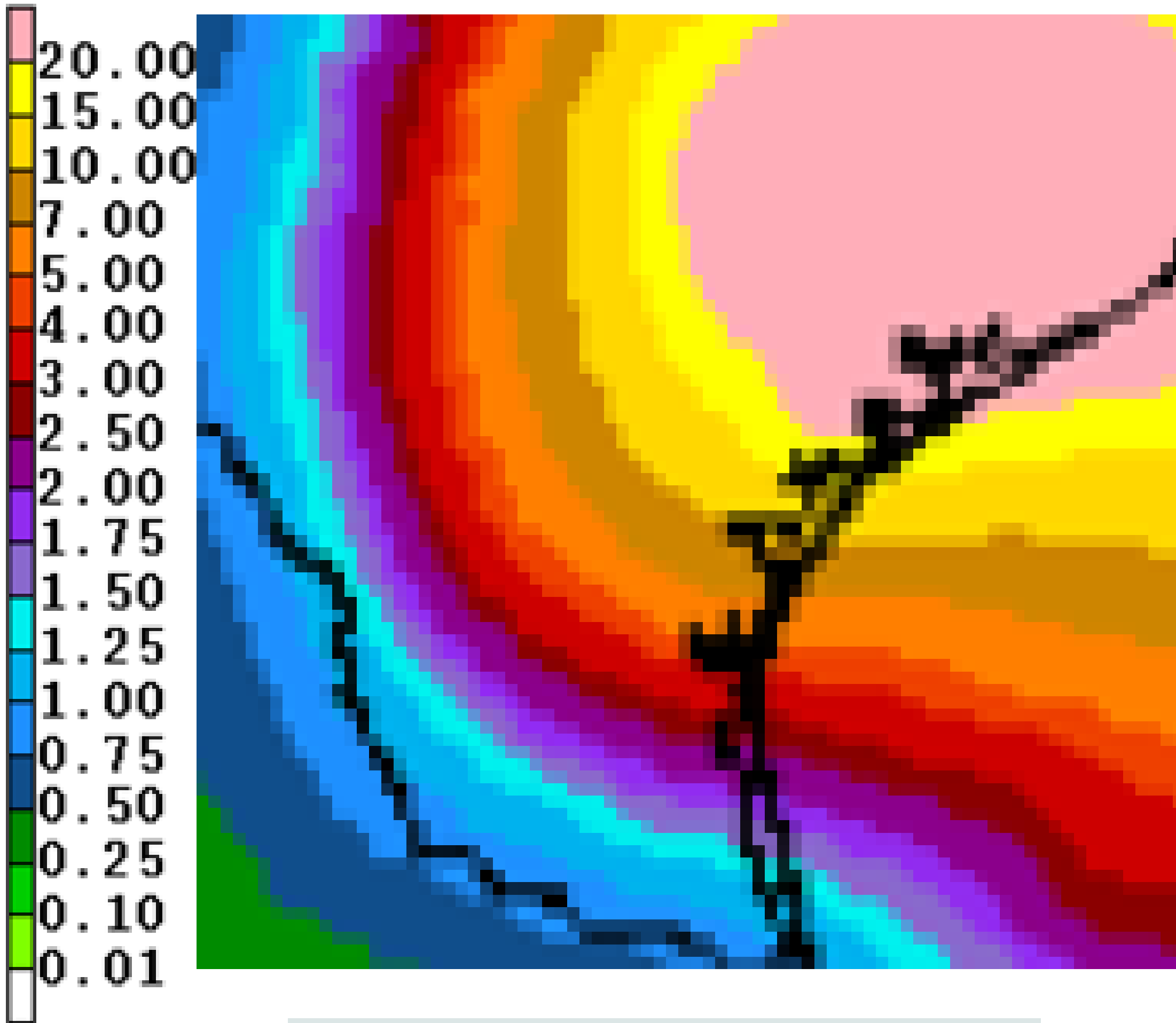
- A prolonged, heavy rainfall event is forecast to unfold as Harvey meanders around South Texas over the next several days. **Life-threatening, catastrophic flooding expected through Tuesday.**
- Storm total rainfall amounts of 20-30" with isolated 40" amounts will be possible NE of a line from Rockport to Goliad. This includes the city of Victoria.

Forecast Rainfall Totals



Corpus Christi
WEATHER FORECAST OFFICE

Hurricane Harvey



Reasonable Worst Case Scenario Map

- To the SW of the Rockport to Goliad line, 5 to 15 inches of rain will be possible. This includes the city of Corpus Christi.
- Locally higher amounts will be possible across the region.
- Rainfall amounts will drop off significantly west of HWY 15, generally less than 5 inches.
- **Flash Flood Watch in Effect**



- Life-threatening conditions continue.
- Harvey is slowly weakening and is now a Category 1 hurricane with max sustained winds of 90 mph
- Peak Storm Surge inundation 6-12 feet above ground level Port Aransas to Port O'Connor
- **Transitioning to a prolonged, heavy rainfall event over next several days.**
- Catastrophic & life-threatening flooding with 20-30" w/isolate 40" totals east of Rockport to Goliad line. Lesser but still significant and dangerous amounts SW of the line.
- Flash Flood Watch in effect



HURRICANE HARVEY BRIEFING

Next update 10:15 AM Saturday

You can get the latest graphics and information on this storm at www.hurricanes.gov



NWSCorpus

www.weather.gov/CorpusChristi