



# HURRICANE HARVEY BRIEFING

11 AM CDT  
Friday, August 25, 2017

Prepared by:  
John Metz



# What's Changed?

## Hurricane Harvey



Corpus Christi  
WEATHER FORECAST OFFICE

- Hurricane Harvey a Category 2 storm with winds 110 mph. Pressure continues to drop now 948 mbs.
- Winds gusting to tropical storm force (40 mph) reaching the coast now.
- Water levels are increasing steadily along coast and will peak tonight through Saturday.
- Storm Surge Impacts (elevated water levels) will likely persist for days especially San Antonio & Lavaca Bays.

# What's Changed?

Hurricane Harvey



Corpus Christi  
WEATHER FORECAST OFFICE

- **River Flood Warnings have been issued for Aransas, Mission, Coleta Creek and Guadalupe Rivers. Major Flooding Expected.**



- Hurricane Harvey is still forecast to strengthen and make landfall as a category 3 hurricane tonight just east of Corpus Christi.
- However, be aware there are still some uncertainties in this track forecast. The center of this storm could wobble left or right directly impacting the City of Corpus Christi, Port Aransas, Rockport, or the Holiday Beach areas.



- Life-threatening storm surge inundation expected along mid coast of 6 to 12 feet above ground level.
- Rainfall totals north and east of a line from Port Aransas to Goliad 20-30” with isolated higher maximum. This will cause Catastrophic and Life-threatening flooding!
- Isolated tornadoes possible beginning later this morning.
- Hurricane Warning is in effect from Port Mansfield to Sargent
- Storm Surge Warning is in effect from Port Mansfield to High Island
- Flash Flood Watch is in effect for most of South TX

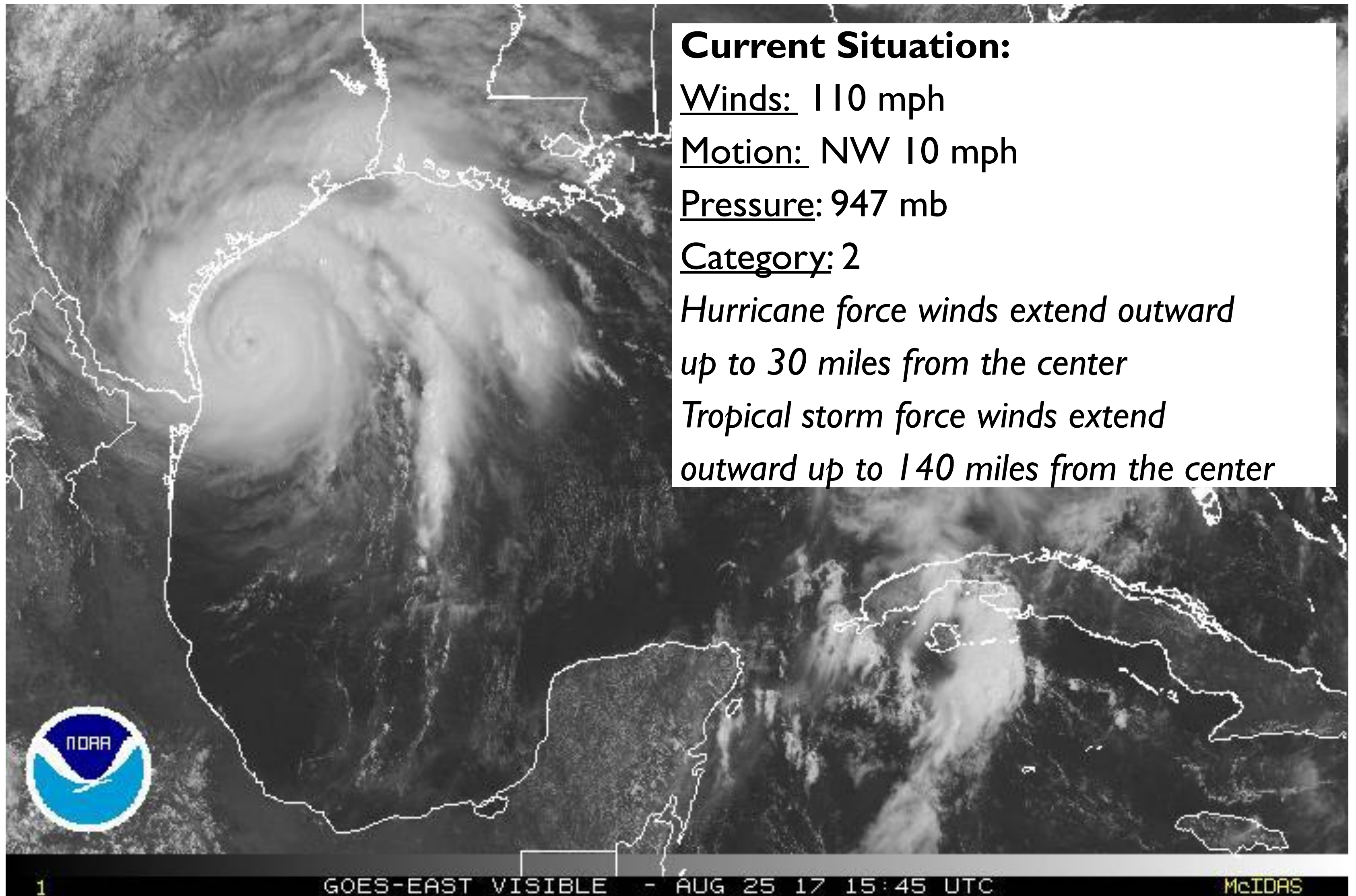


# Current Satellite View



Corpus Christi  
WEATHER FORECAST OFFICE

## Hurricane Harvey



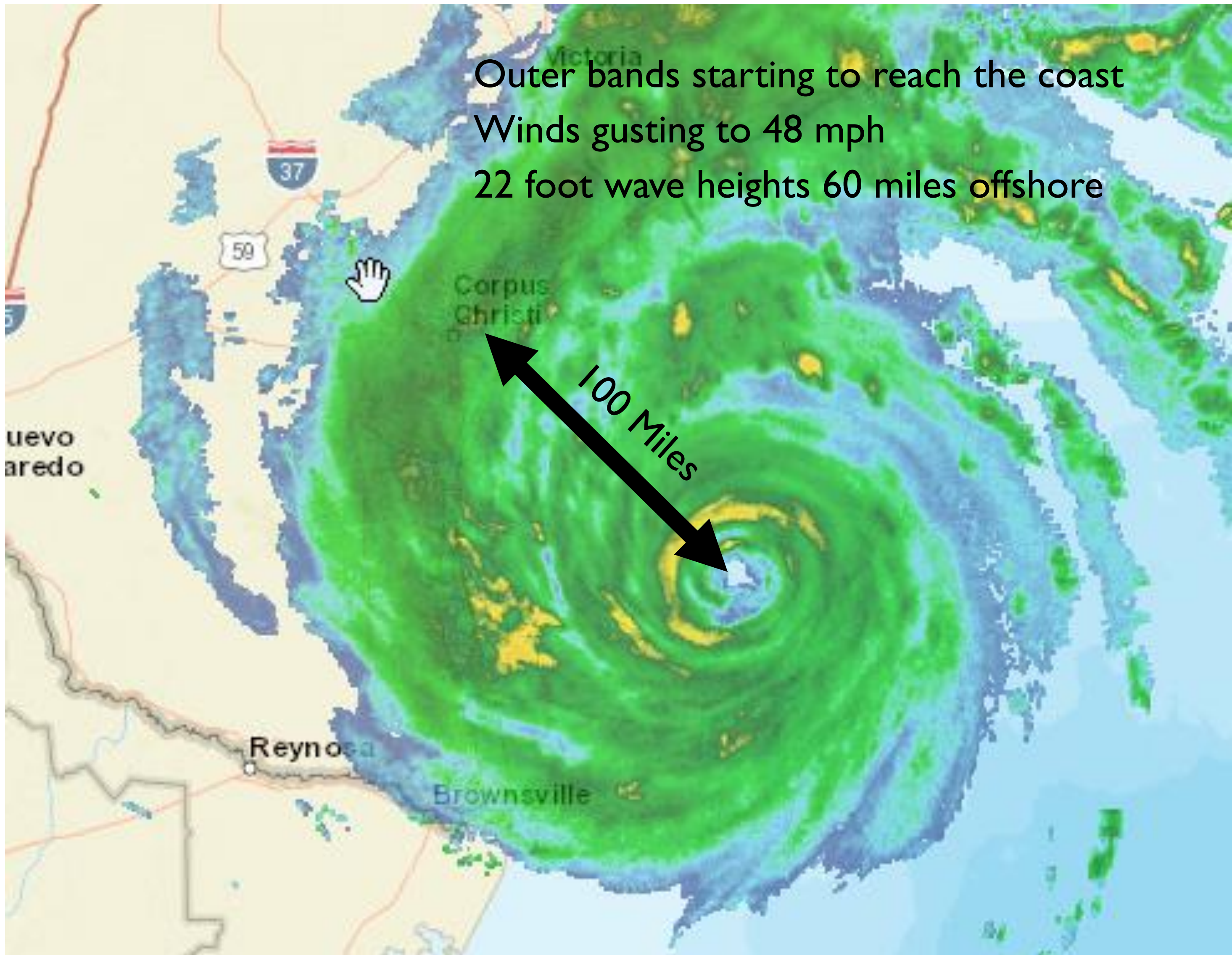


# Current Radar View



Corpus Christi  
WEATHER FORECAST OFFICE

Hurricane Harvey





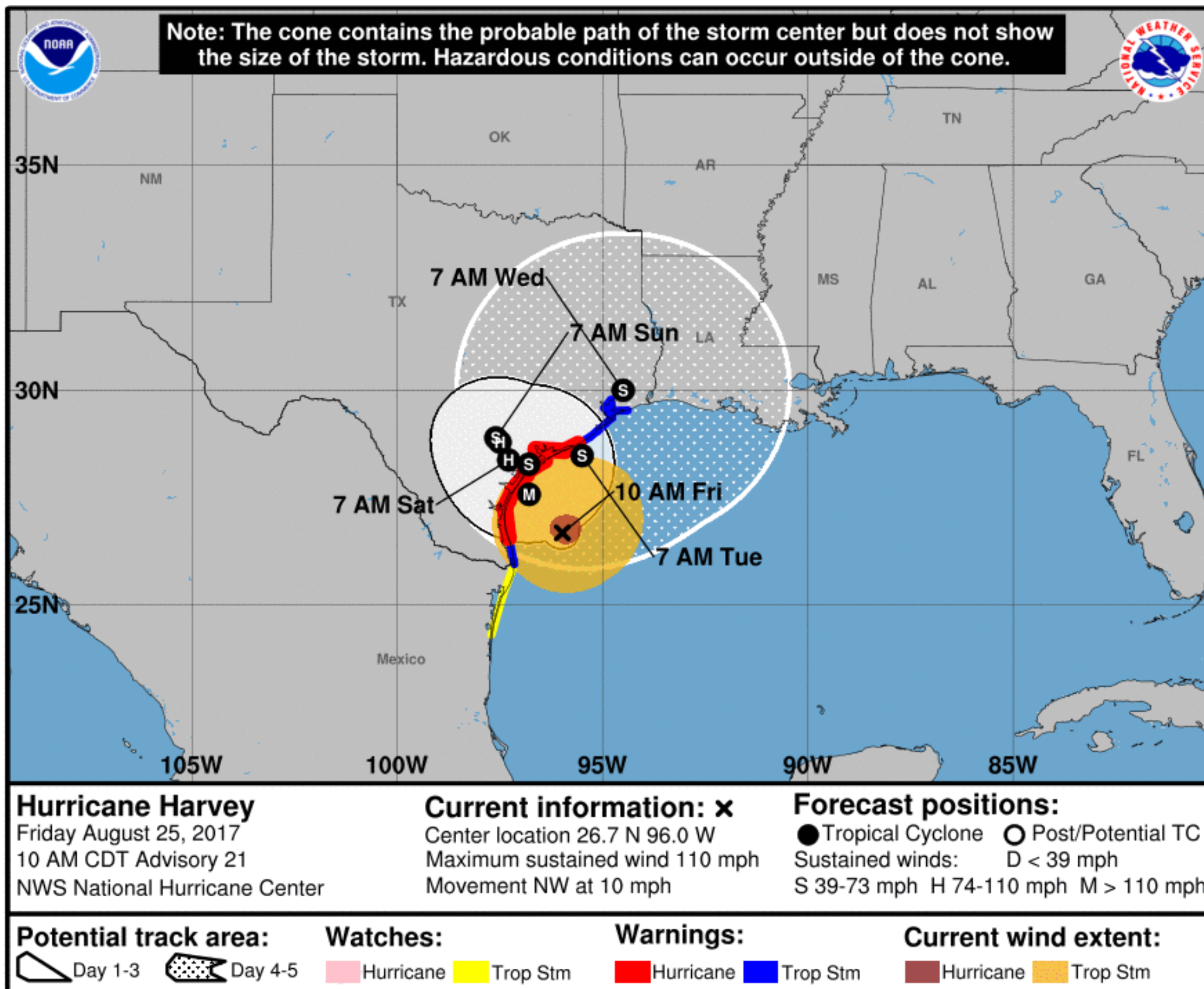
# Situation Overview



Corpus Christi

WEATHER FORECAST OFFICE

## Hurricane Harvey



- Forecast calls for landfall just east of Corpus Christi.
- Sustained tropical storm force winds expected later this morning.
- Hurricane Force winds expected to begin this afternoon and continue through Saturday Morning.
- Hurricane force winds are likely to persist into Saturday evening across northeast Coastal Bend.
- Tropical storm force wind then continue through Sunday Evening (and could last longer based on then meandering movement of Harvey).

**NOTE:** Do not focus on the exact track. Impacts can occur well outside the area enclosed by the cone.

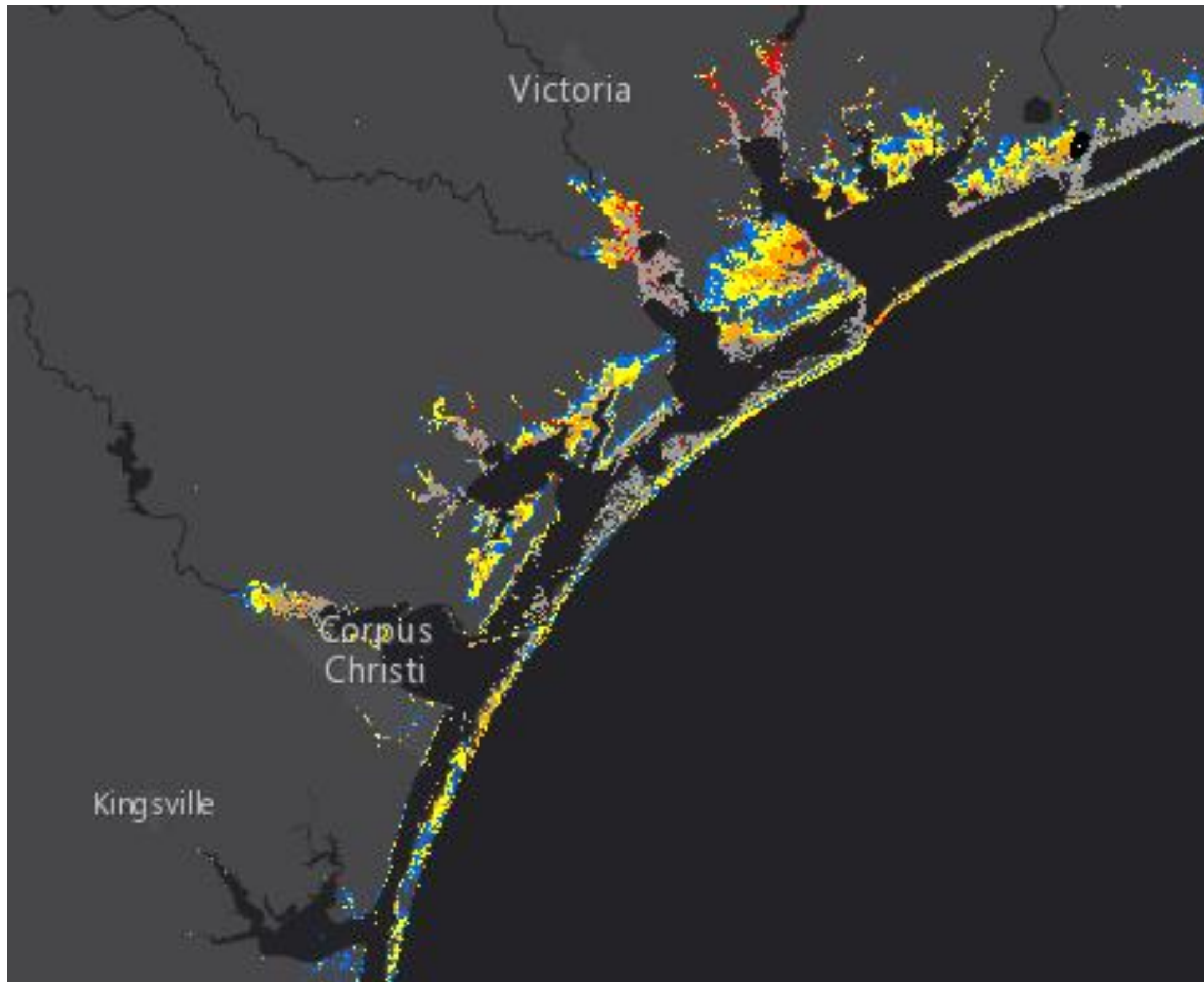


# Potential Storm Surge

Hurricane Harvey



Corpus Christi  
WEATHER FORECAST OFFICE



**Reasonable Worst Case Scenario Map**

## Areas of greatest risk:

- Plan for peak storm surge flooding of 6-12 feet above ground level from near Mustang Island to Port O'Connor.
- South of Mustang Island storm surge flooding 4-6 feet above ground level.

## Timing

- Life threatening storm surge inundation will begin as early as this afternoon with peak tonight and Saturday.

# Expected Storm Total Rainfall

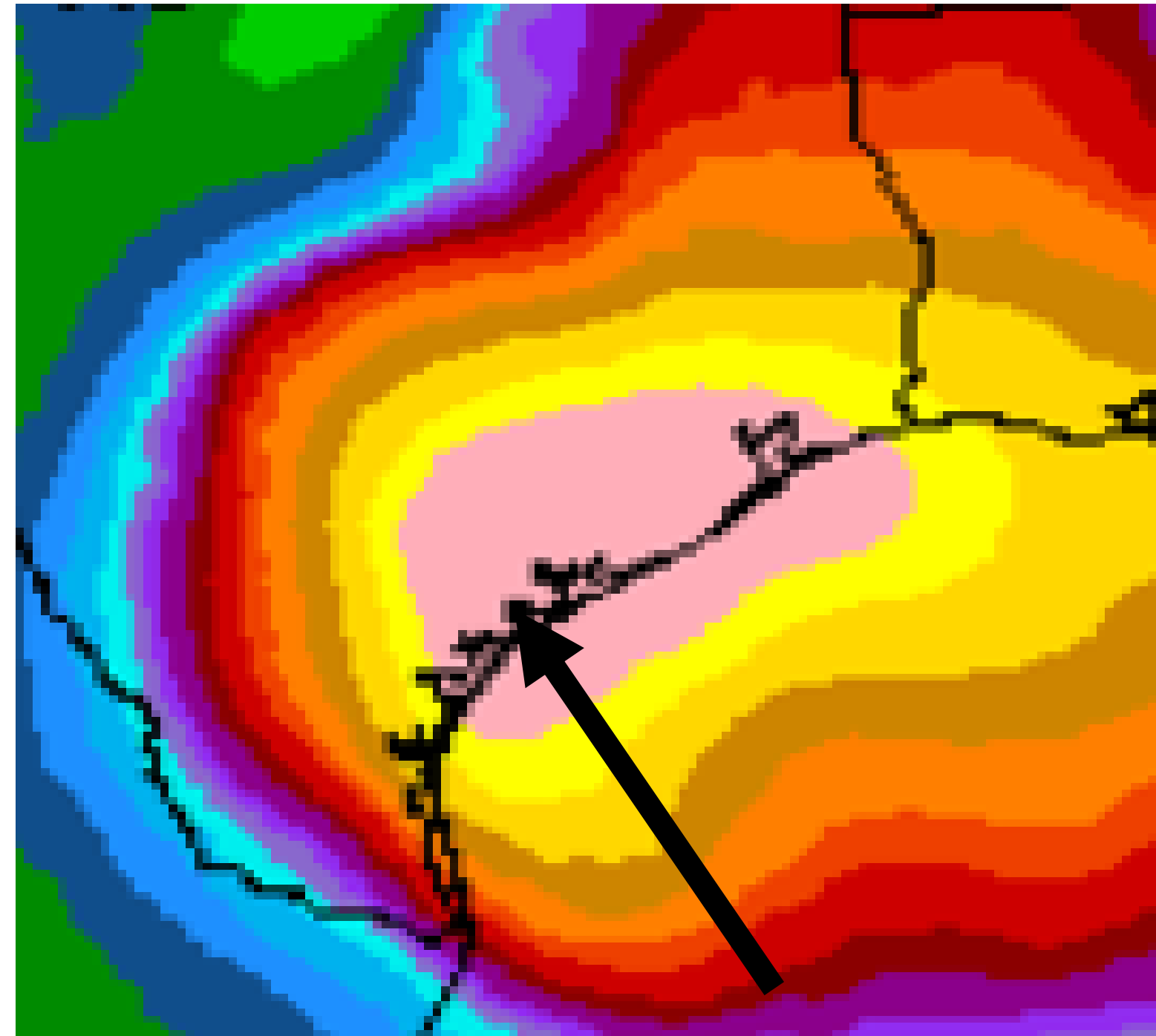


Corpus Christi  
WEATHER FORECAST OFFICE

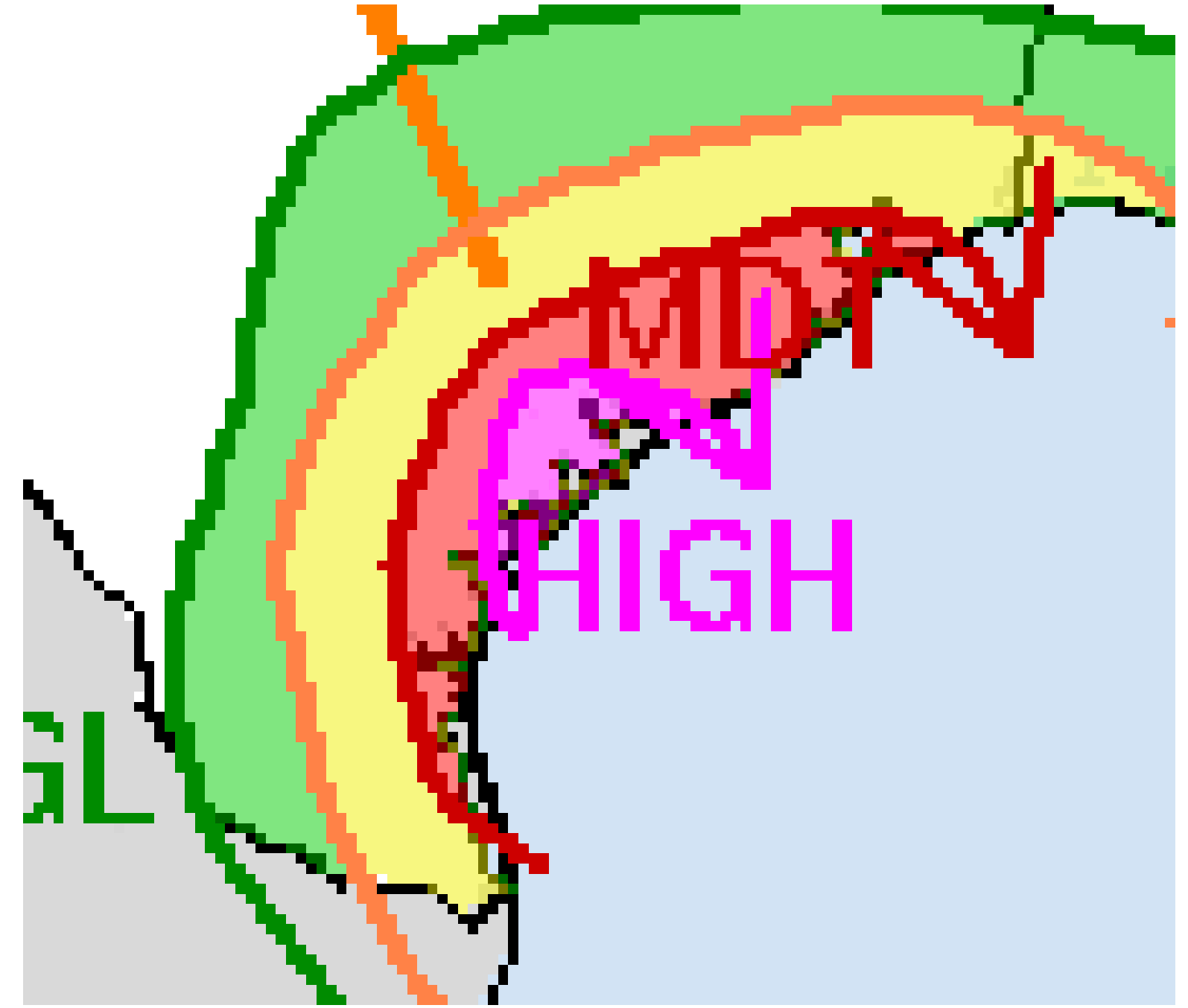
Hurricane Harvey

**This will cause Catastrophic and Life-threatening flooding!**

Storm total rainfall



Excessive Rainfall Forecast



Maximum Storm Total Rainfall amounts of 20-30" with isolated higher amounts northeast of a line from Port Aransas to Goliad (lesser but still significant amounts further south and west )





- Hurricane Harvey currently category 2 is still forecast to strengthen and make landfall as a category 3 hurricane tonight.
- Preparations should already be complete!
- Hurricane and Storm Surge warnings continue.
- Earliest onset of tropical storm force winds to begin later this morning, with hurricane force winds as early as this afternoon.



# HURRICANE HARVEY BRIEFING

*The Next Briefing Will Be:  
Friday at 4:05 AM CDT*

*You can get the latest graphics and information on this storm at [www.hurricanes.gov](http://www.hurricanes.gov)*



NWSCorpus

[www.weather.gov/CorpusChristi](http://www.weather.gov/CorpusChristi)