



HURRICANE HARVEY BRIEFING

4 AM CDT
Friday, August 25, 2017

Prepared by:
Lara Beal





- No changes to hurricane or storm surge warnings.
- Hurricane Harvey has been upgraded to a category 2 hurricane with maximum sustained winds currently 105 mph.
- Hurricane Harvey is still forecast to strengthen and make landfall as a category 3 hurricane tonight.
- Earliest onset of tropical storm force winds to begin later this morning, with hurricane force winds as early as this afternoon.



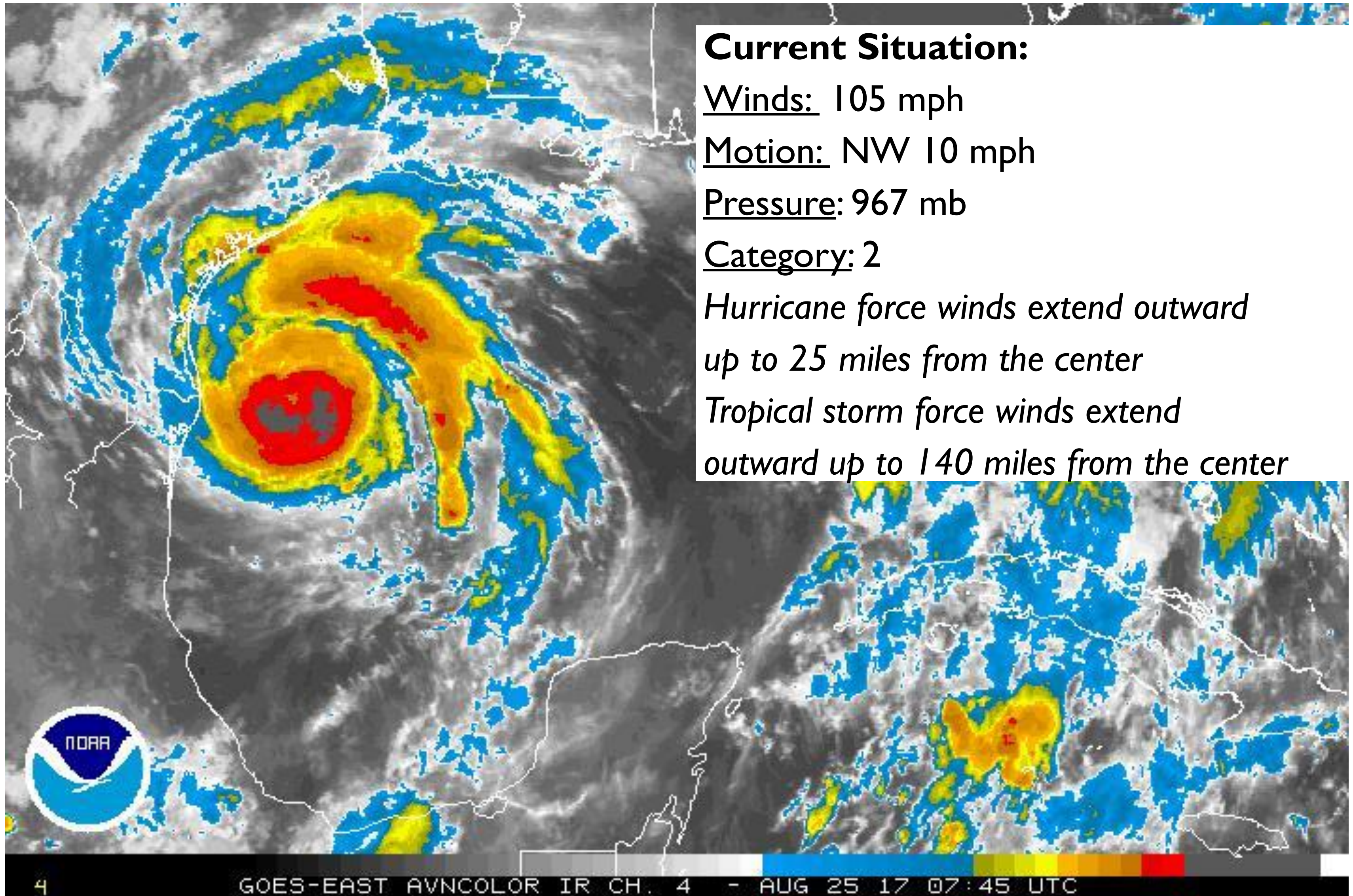
- Life-threatening storm surge inundation expected along mid coast of 6 to 12 feet above ground level.
- Rainfall totals north and east of a line from Port Aransas to Goliad 20-30” with isolated higher maximum. Life-threatening, devastating, record flooding expected!
- Isolated tornadoes possible beginning later this morning.
- Hurricane Warning is in effect from Port Mansfield to Sargent
- Storm Surge Warning is in effect from Port Mansfield to High Island
- Flash Flood Watch is in effect for most of South TX

Current Satellite View



Corpus Christi
WEATHER FORECAST OFFICE

Hurricane Harvey



Current Situation:

Winds: 105 mph

Motion: NW 10 mph

Pressure: 967 mb

Category: 2

*Hurricane force winds extend outward
up to 25 miles from the center*

*Tropical storm force winds extend
outward up to 140 miles from the center*

Current Radar View



Corpus Christi
WEATHER FORECAST OFFICE

Hurricane Harvey



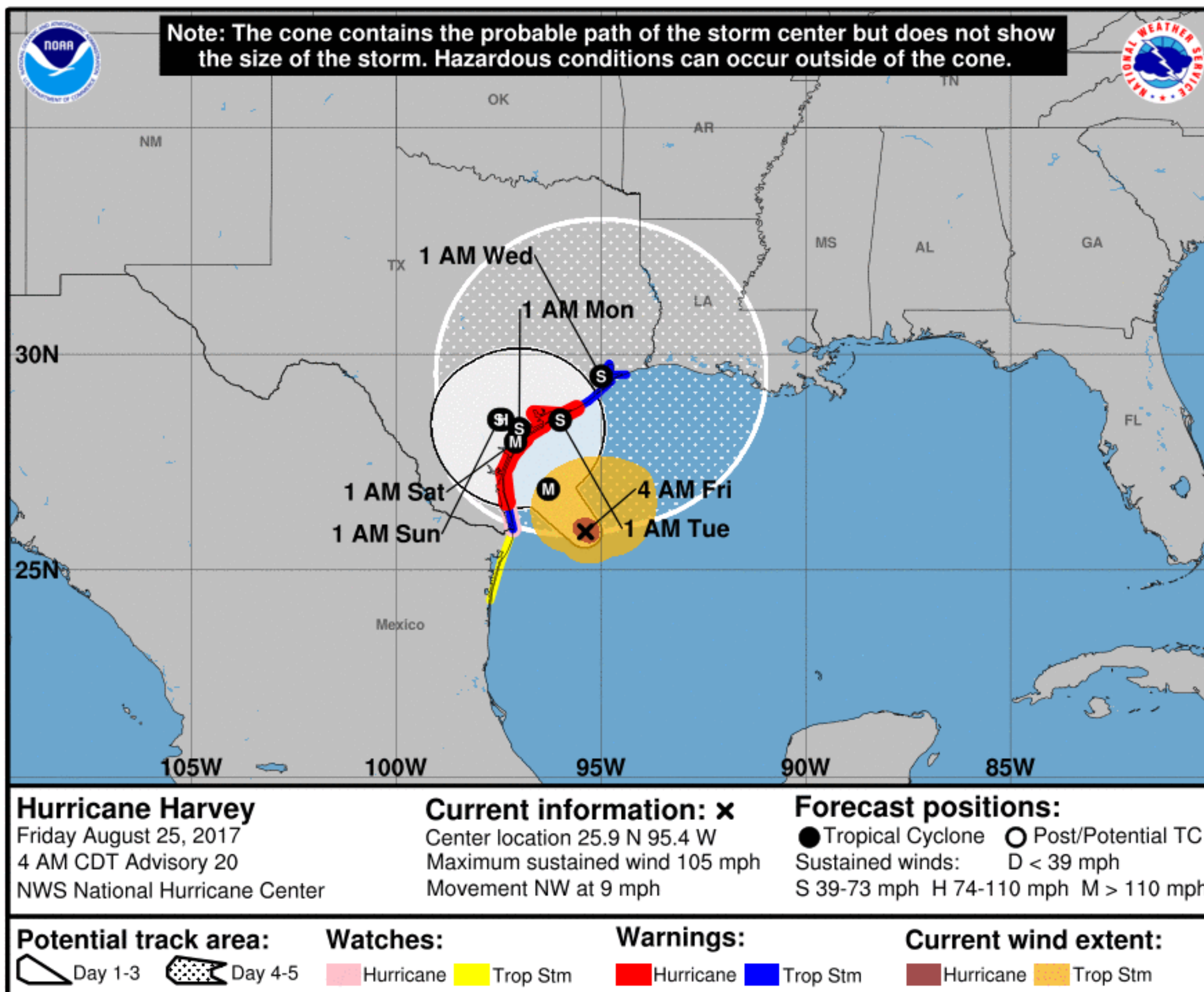
Situation Overview



Corpus Christi

WEATHER FORECAST OFFICE

Hurricane Harvey



- Forecast to reach major hurricane strength with max sustained winds 120 mph near the storm center.
- Impacts felt across all the mid Texas coast and inland portions of South Texas.
- Hurricane force winds are likely to persist into Saturday evening.
- Tropical storm force winds then continue through Sunday morning (and could last longer based on then meandering movement of Harvey).

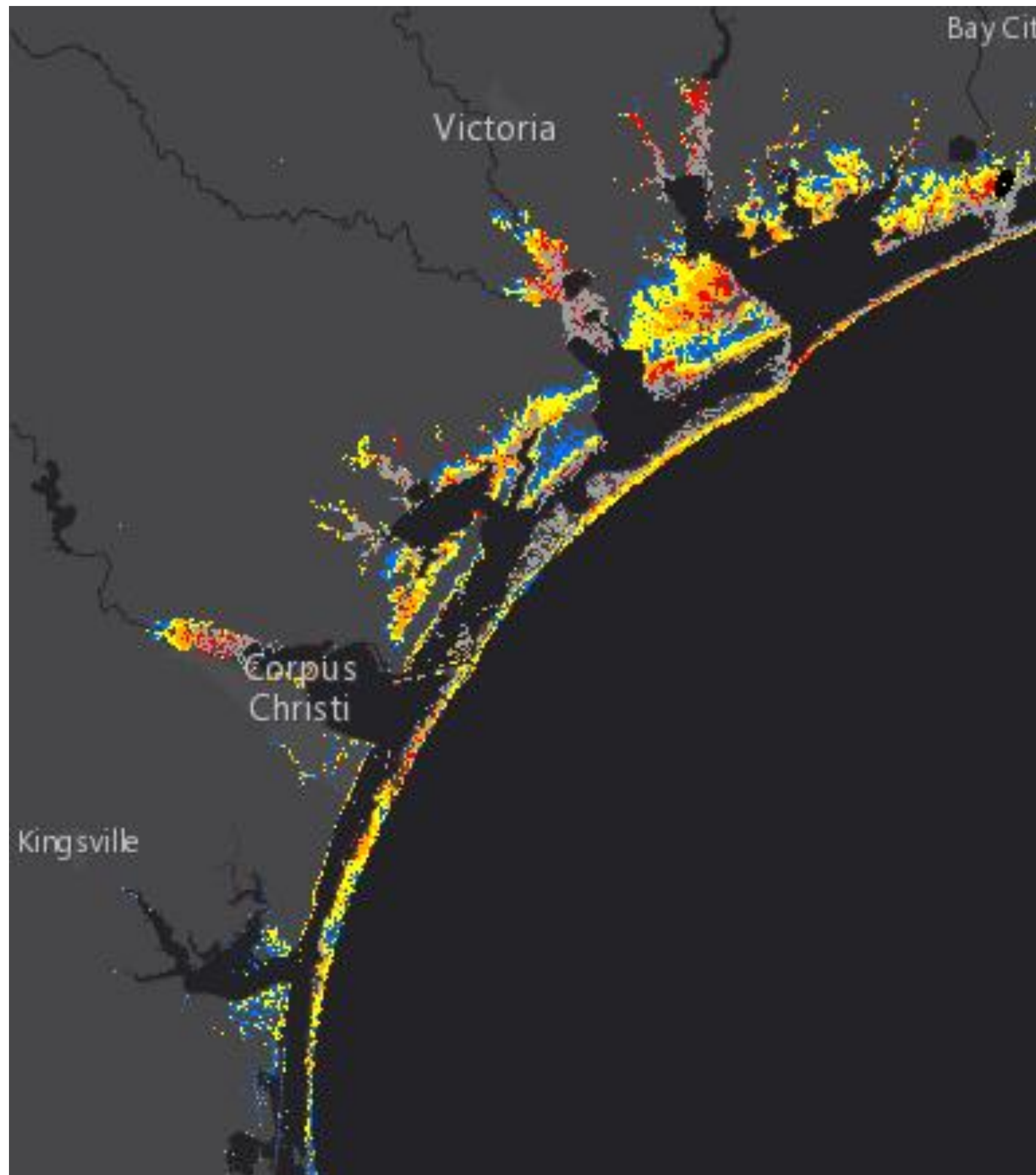
NOTE: Do not focus on the exact track. Impacts can occur well outside the area enclosed by the cone.

Potential Storm Surge



Corpus Christi
WEATHER FORECAST OFFICE

Hurricane Harvey



Reasonable Worst Case Scenario Map

Areas of greatest risk:

- Plan for peak storm surge flooding of 6-12 feet above ground level from near Mustang Island to Port O'Connor.
- South of Mustang Island storm surge flooding 4-6 feet above ground level.

Timing

- Life threatening storm surge inundation will begin as early as later this morning with peak tonight and Saturday.

Expected Storm Total Rainfall

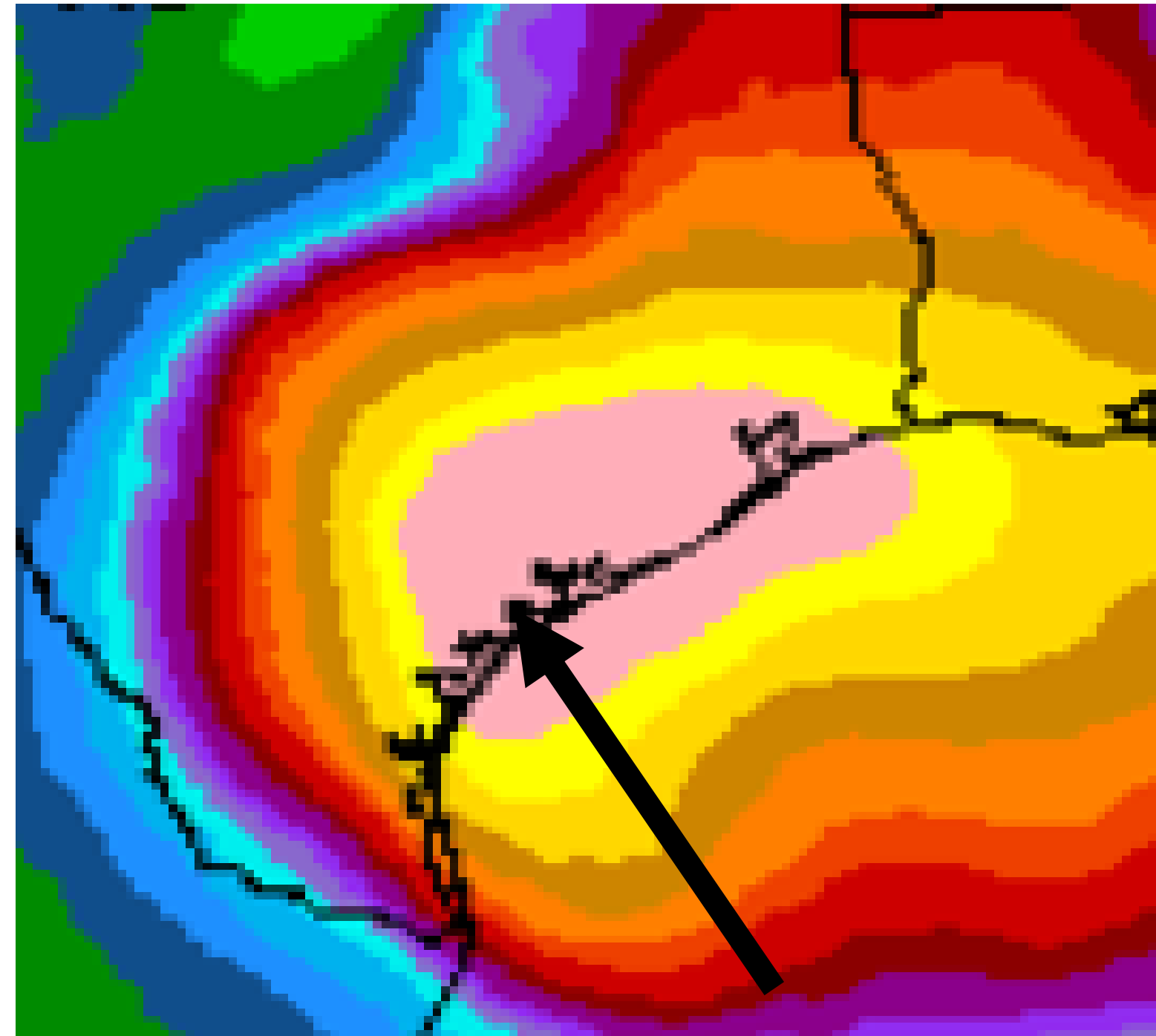


Corpus Christi
WEATHER FORECAST OFFICE

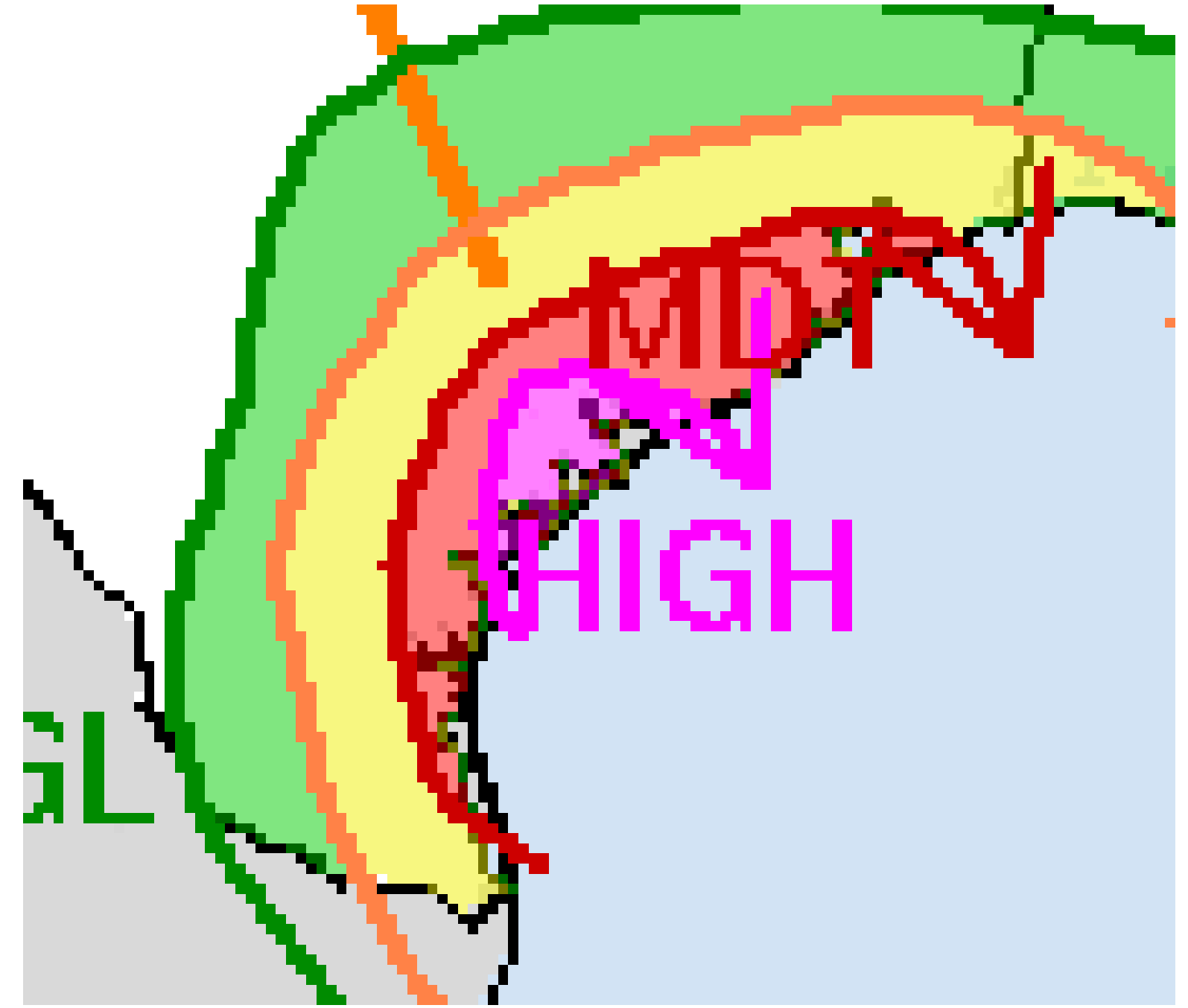
Hurricane Harvey

Life-threatening, devastating, record flooding expected!

Storm total rainfall



Excessive Rainfall Forecast



Maximum Storm Total Rainfall amounts of 20-30" with isolated higher amounts northeast of a line from Port Aransas to Goliad (lesser but still significant amounts further south and west)

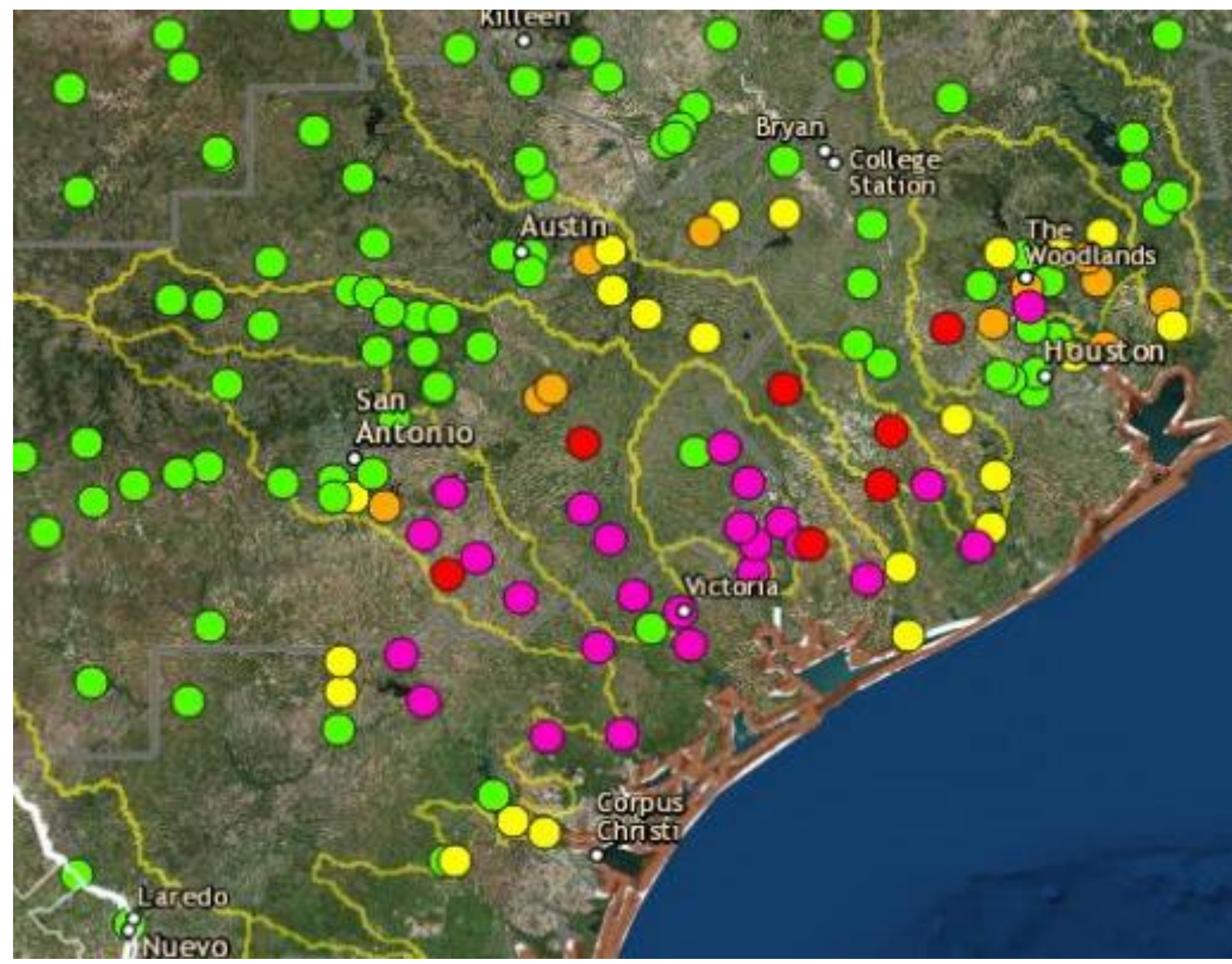
River Flooding Likely



Corpus Christi
WEATHER FORECAST OFFICE

Hurricane Harvey

- Widespread **Major** and **Record** flooding expected across San Antonio, Lavaca, Navidad and Guadalupe Rivers



Initial River Flood Projections based on Forecast Rainfall



- Hurricane Harvey currently category 2 is still forecast to strengthen and make landfall as a category 3 hurricane tonight.
- Preparations should already be complete!
- Hurricane and Storm Surge warnings continue.
- Earliest onset of tropical storm force winds to begin later this morning, with hurricane force winds as early as this afternoon.



- We strongly advise local citizens to listen to your local elected officials and heed their recommendations!
- Expect devastating to catastrophic wind impacts.
- Structural damage to sturdy buildings, some with complete roof and wall failure are possible.
- If you are in a storm surge warning area, you need to heed evacuation orders!



HURRICANE HARVEY BRIEFING

Please contact NWS Corpus Christi at
361-289-0959 or 888-579-9731
or through the “CRPchat” NWSChatroom

*The Next Full Briefing Update Will Be:
Friday at 10:15 AM CDT*

You can get the latest graphics and information on this storm at www.hurricanes.gov