



# HURRICANE HARVEY BRIEFING

10:30 PM CDT  
Friday, August 25, 2017

Prepared by:  
Lara Beal





- Eye of Category 4 Harvey has made landfall near Rockport, TX
- Expect continued Category 4 with maximum sustained winds 140 mph with gusts 160 mph!
- Pressure down to 938 mbs.
- Very destructive winds and storm surge inundation of 9 to 13 feet above ground level from Port Aransas to Port O'Connor.



- Hurricane Force winds are battering the coastal areas.
- Deepest water will occur along the immediate coast and northeast of landfall location accompanied by large destructive waves. Includes Port Aransas, Aransas Pass, Rockport, Fulton, Bayside, Lamar Peninsula, and Austwell.
- Catastrophic and life-threatening flooding will develop as Harvey stalls over the mid Texas coast through early next week! Rainfall totals 15 to 30” max 40”

# Rainfall Totals thru 9pm



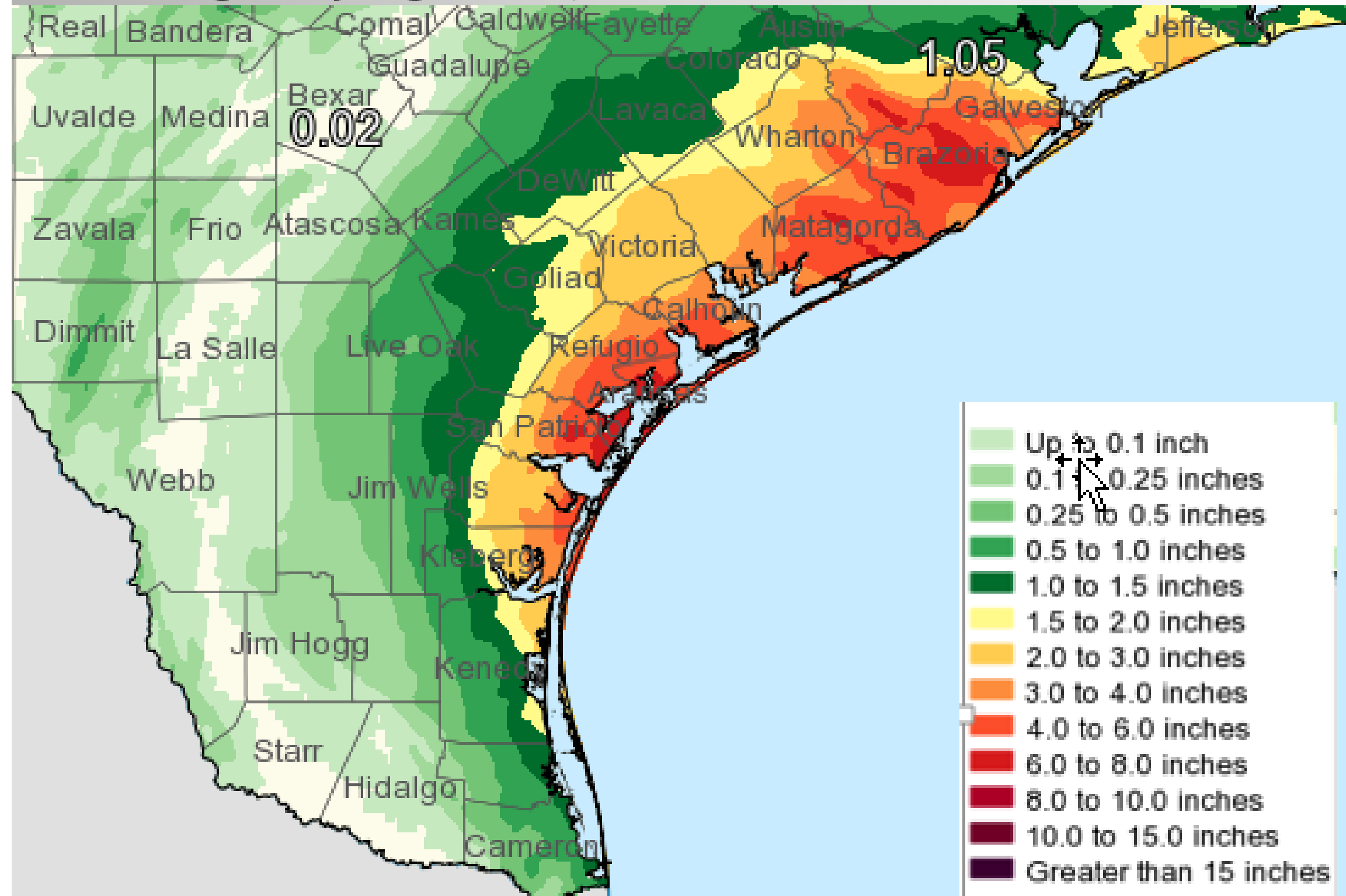
Corpus Christi  
WEATHER FORECAST OFFICE

## Hurricane Harvey

### ...[Rainfall](#) Reports...

Location	Amount
6 SSE Austwell	6.33 in
6 SSE Austwell	5.97 in
San Antonio River Near Mcfad	4.58 in
2 SW Victoria	4.11 in
14 ENE Fulton	3.96 in
3 NNE Tivoli	3.91 in
Garcitas <a href="#">Creek</a> Near Inez	3.89 in
1 N Inez	3.51 in
4 ENE Victoria	3.14 in
1 E Victoria	2.94 in
Aransas County Airport	2.72 in
4 ENE Seadrift	2.67 in
1 SSE Kamay	2.46 in
5 W Corpus Christi	2.44 in
3 S Telferner	2.38 in
Regional Airport	2.16 in
3 NNW Schroeder	2.08 in
Coletto <a href="#">Creek</a> At Arnold Road	2.08 in
Victoria	2.00 in
Corpus Christi	1.97 in
4 ENE Robstown	1.68 in
1 SSE Aransas Pass	1.50 in
<a href="#">Abv</a> Nueces Rv	1.48 in
3 NE Aransas Pass	1.31 in
Kingsville Nas	1.12 in

Valid Ending Friday August 25th, 2017 at 9 PM CDT



# Current Radar View

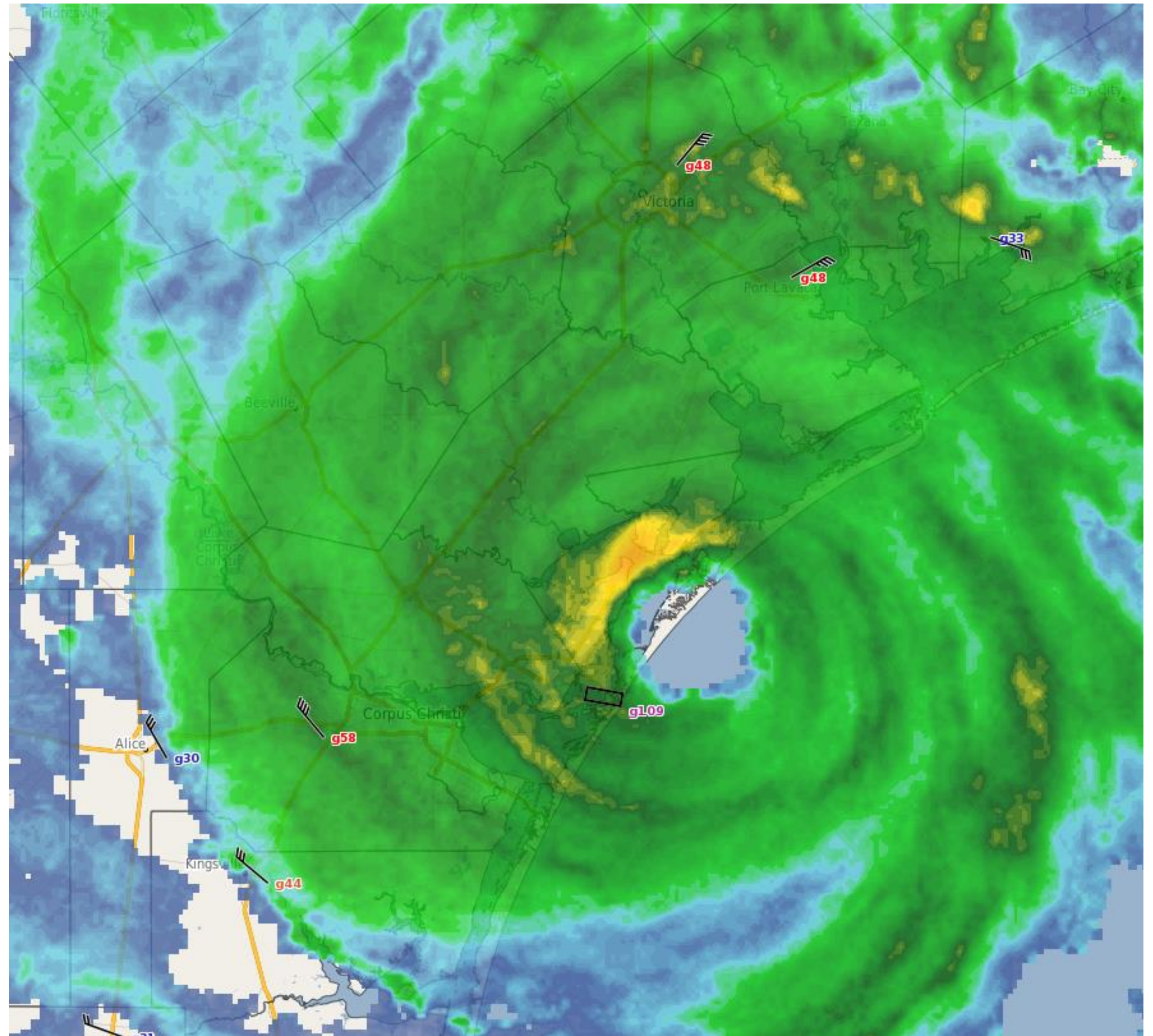


Corpus Christi  
WEATHER FORECAST OFFICE

## Hurricane Harvey

### Reported Wind Gusts

- 2 ENE Port Aransas  
131 mph gust
- Rockport 125 mph  
gust
- 1 ENE Copano Village  
121 mph gust

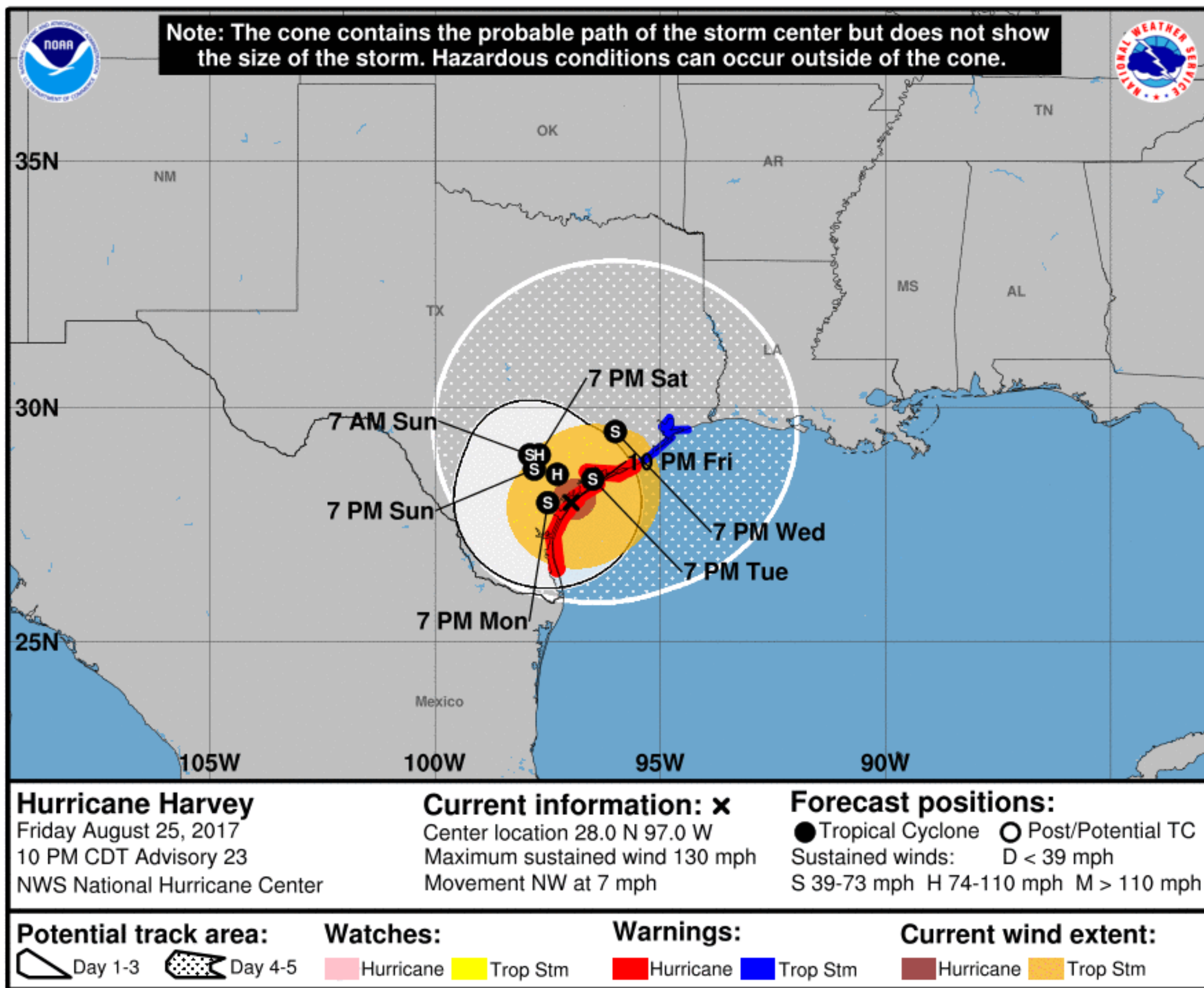


# Situation Overview



Corpus Christi  
WEATHER FORECAST OFFICE

## Hurricane Harvey



- Harvey remains a cat. 4 hurricane with forecast max sustained winds of 130 mph with gusts to 160 mph for the next several hours
- Center of eye makes landfall as Cat. 4 Hurricane near Rockport, TX
- Very slow movement, will maintain hurricane force winds into Saturday

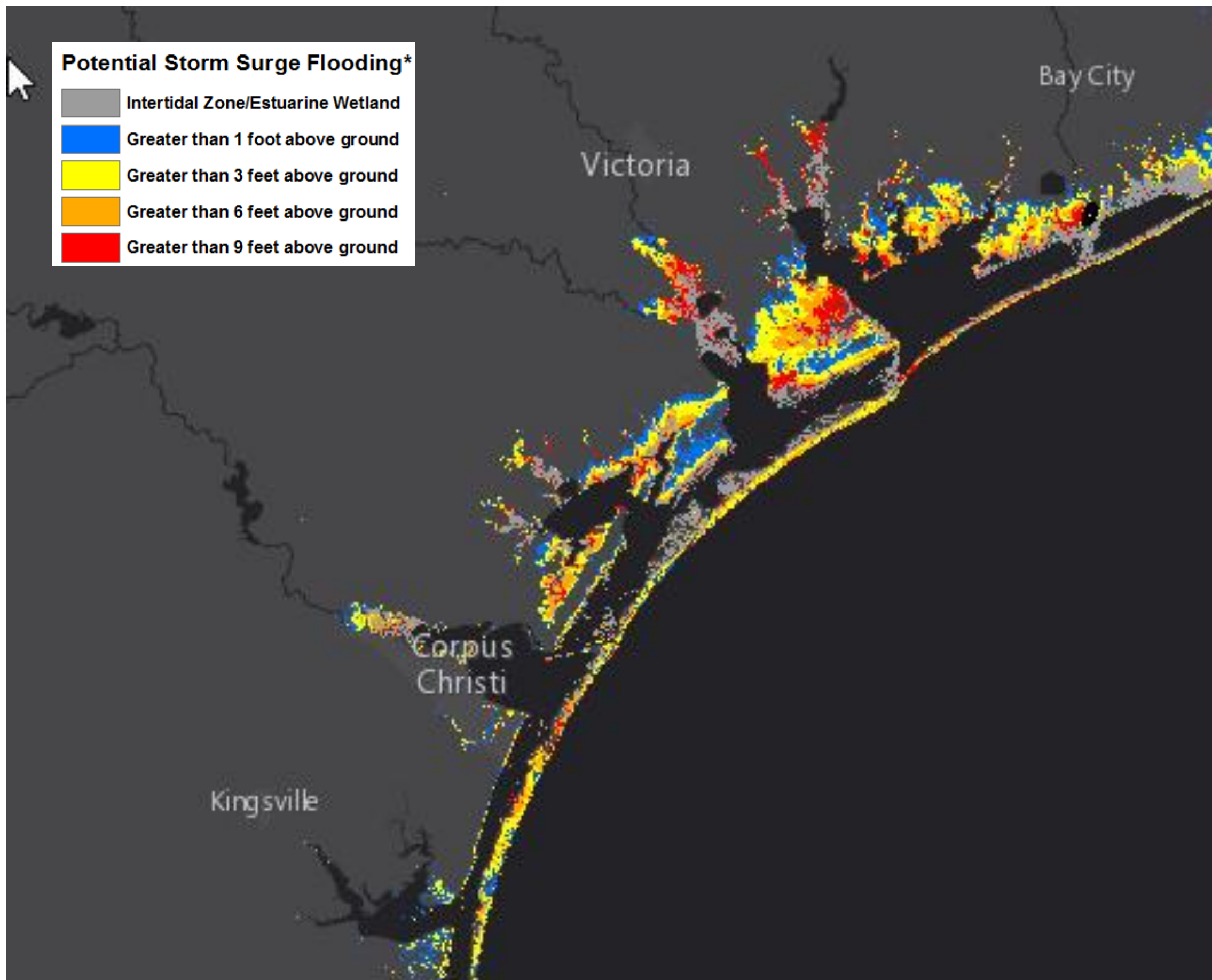
**NOTE:** Do not focus on the exact track. Impacts can occur well outside the area enclosed by the cone.

# Potential Storm Surge



Corpus Christi  
WEATHER FORECAST OFFICE

Hurricane Harvey



**Reasonable Worst Case Scenario Map**

## Areas of greatest risk:

- Plan for peak storm surge flooding of 9-13 feet above ground level from Port Aransas to Port O'Connor. South of there storm surge flooding 4-8 feet above ground level.

## Timing

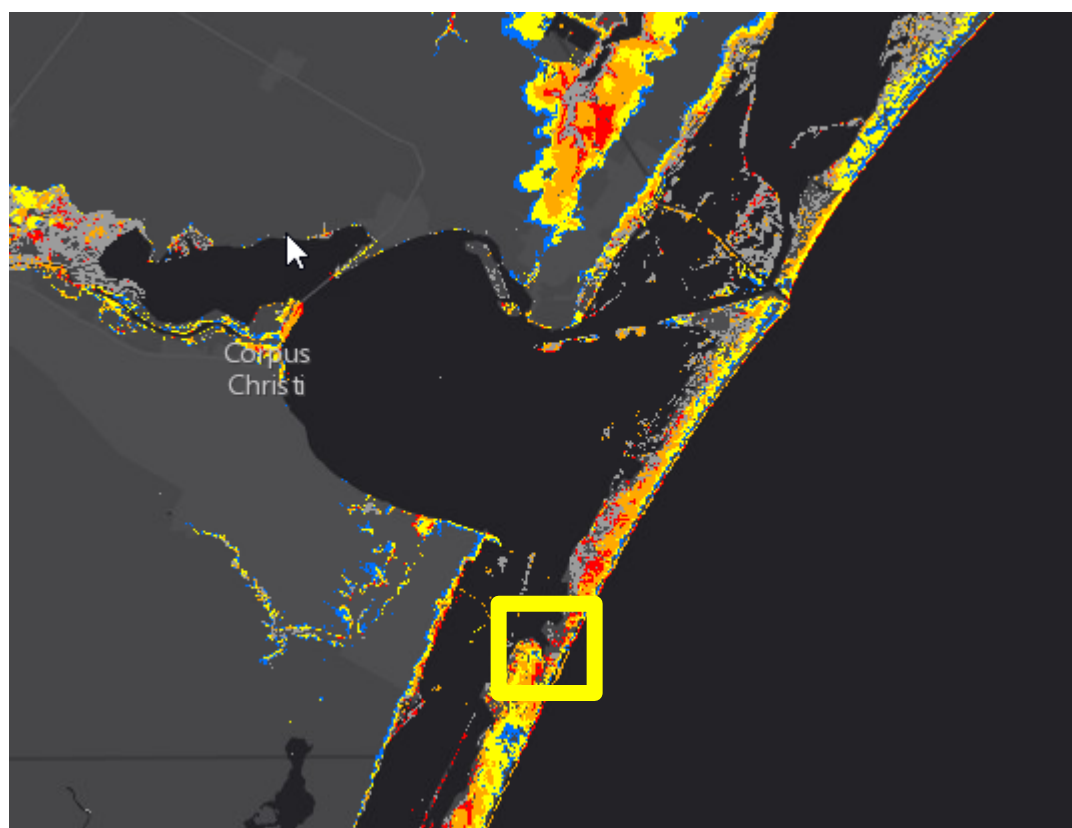
- Life threatening storm surge inundation peaking tonight through Saturday.

# Storm Surge Observations



Corpus Christi  
WEATHER FORECAST OFFICE

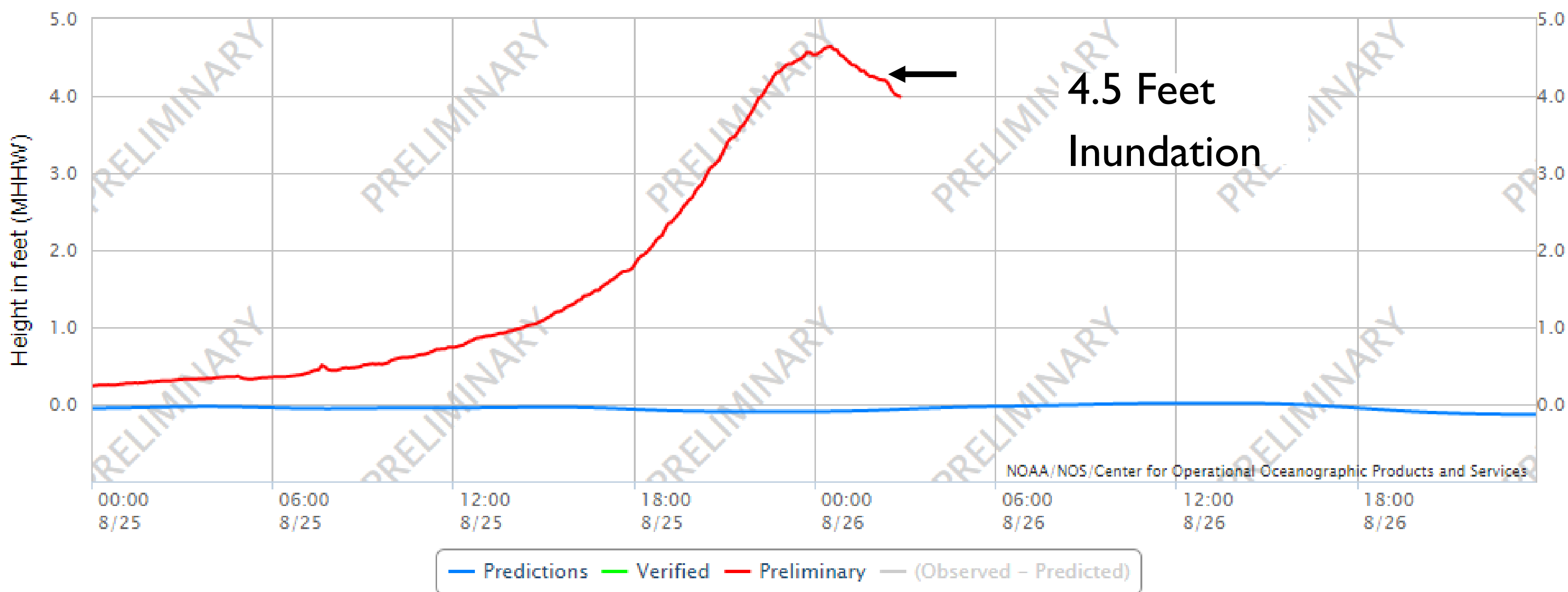
Hurricane Harvey



**Life-threatening Surge expected  
of 4 to 8 feet above ground level (inundation)**

## Packery Channel

NOAA/NOS/CO-OPS  
Observed Water Levels at 8775792, Packery Channel TX  
From 2017/08/25 00:00 GMT to 2017/08/26 23:59 GMT



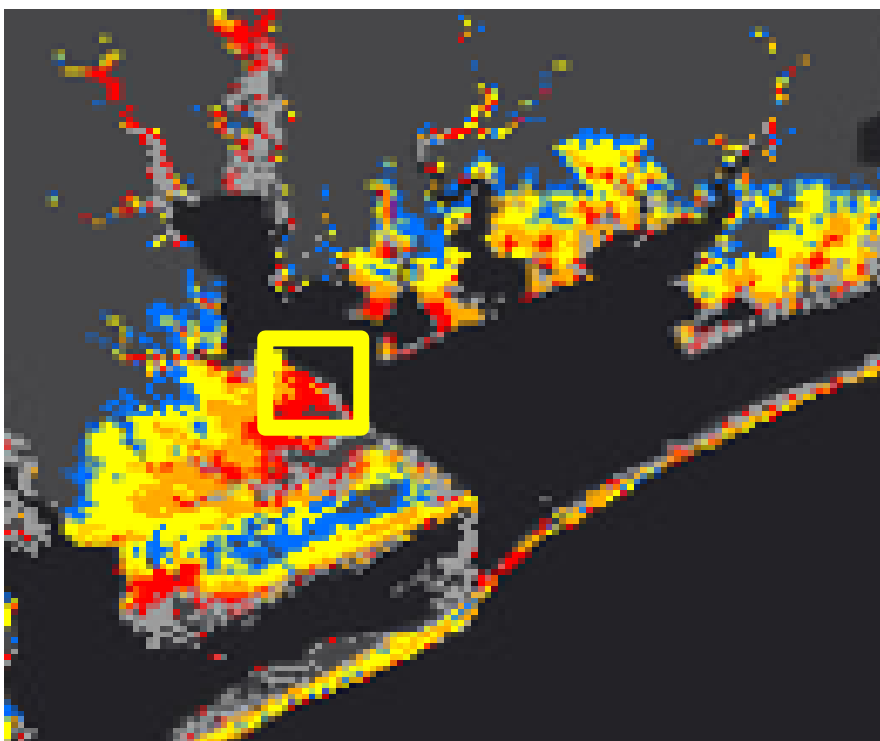


# Storm Surge Observations



Corpus Christi  
WEATHER FORECAST OFFICE

Hurricane Harvey



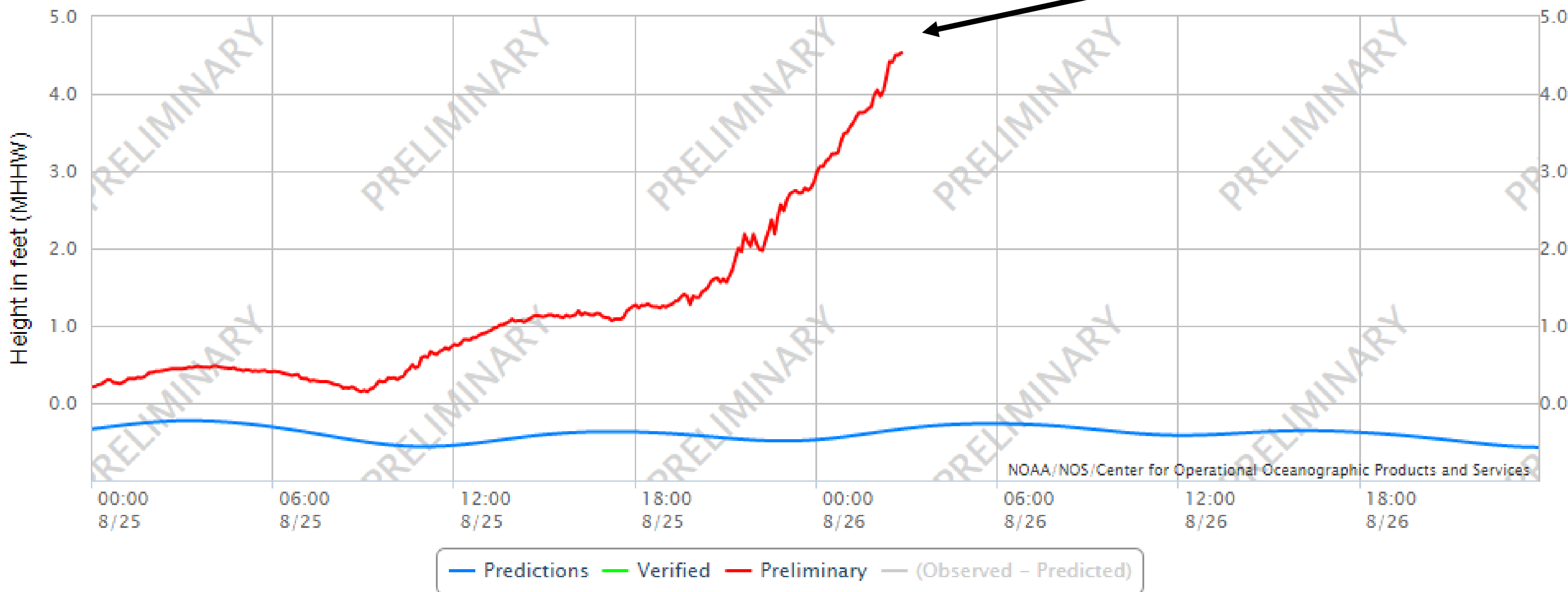
**Life-threatening Surge expected  
of 9 to 13 feet above ground level (inundation)**

## Port Lavaca

NOAA/NOS/CO-OPS

Observed Water Levels at 8773259, Port Lavaca TX  
From 2017/08/25 00:00 GMT to 2017/08/26 23:59 GMT

4.5 Feet  
Inundation

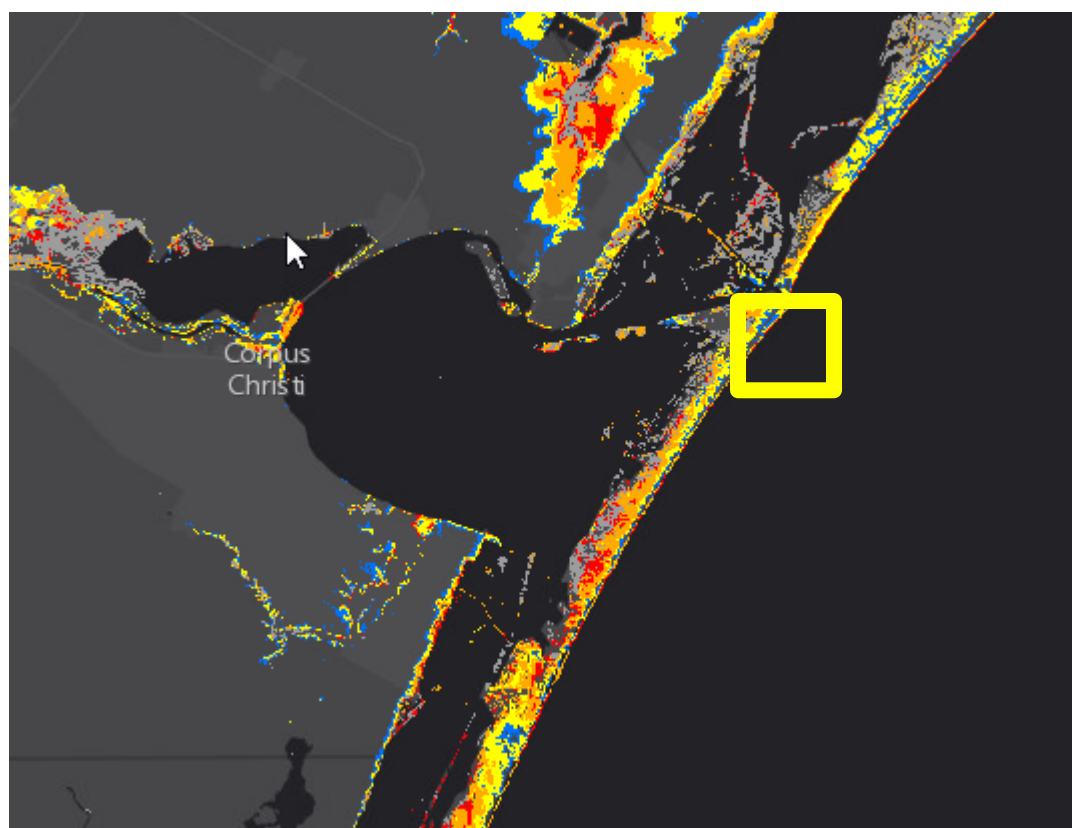


# Storm Surge Observations



Corpus Christi  
WEATHER FORECAST OFFICE

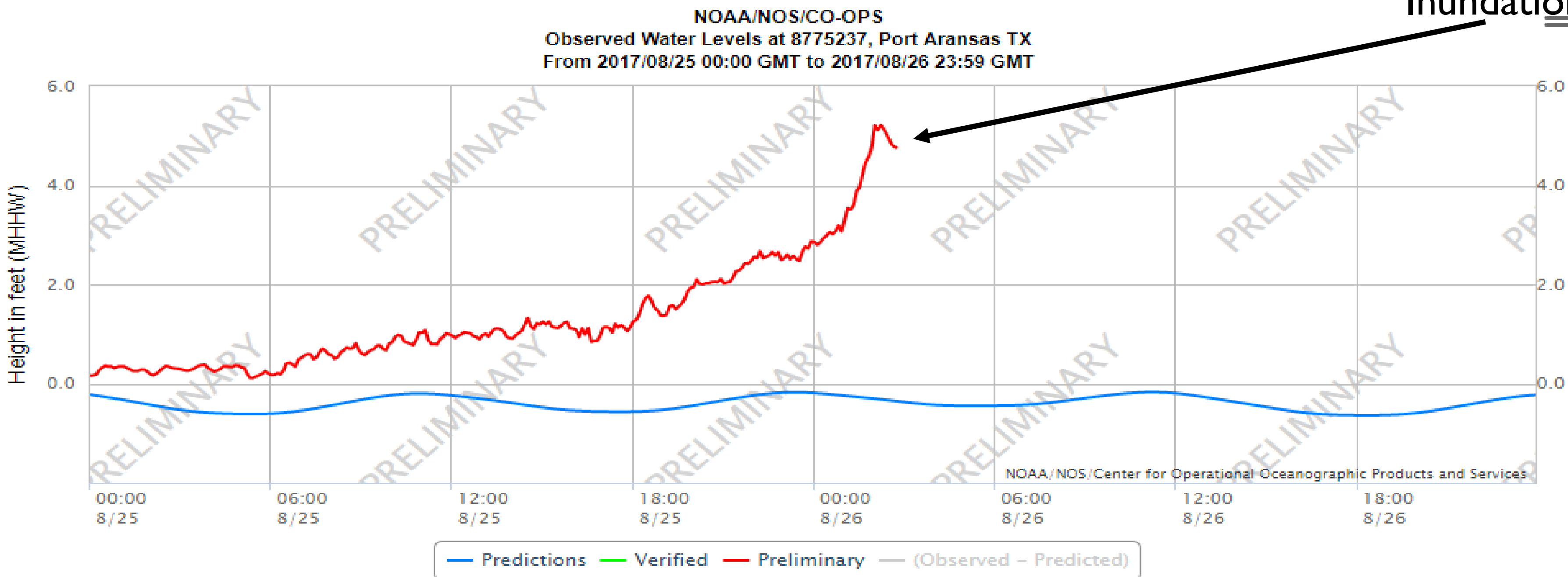
Hurricane Harvey



**Life-threatening Surge expected  
of 9 to 13 feet above ground level (inundation)**

## Port Aransas

4.8 Feet  
Inundation

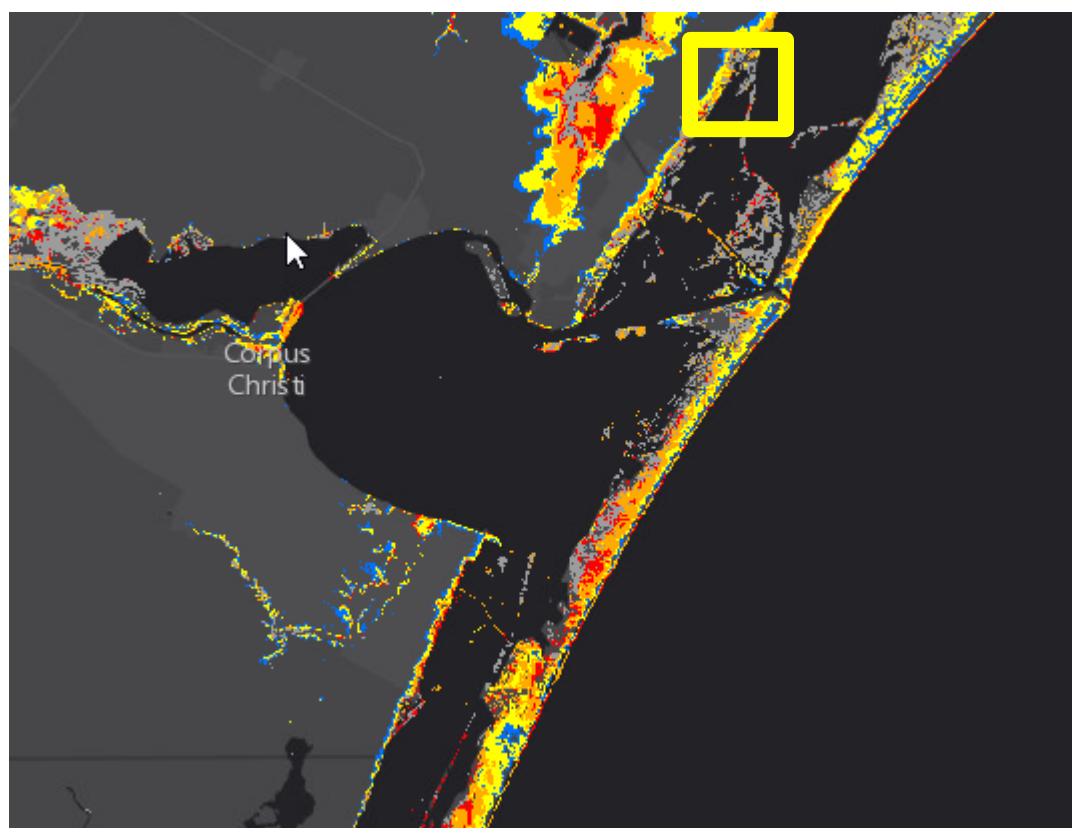


# Storm Surge Observations



Corpus Christi  
WEATHER FORECAST OFFICE

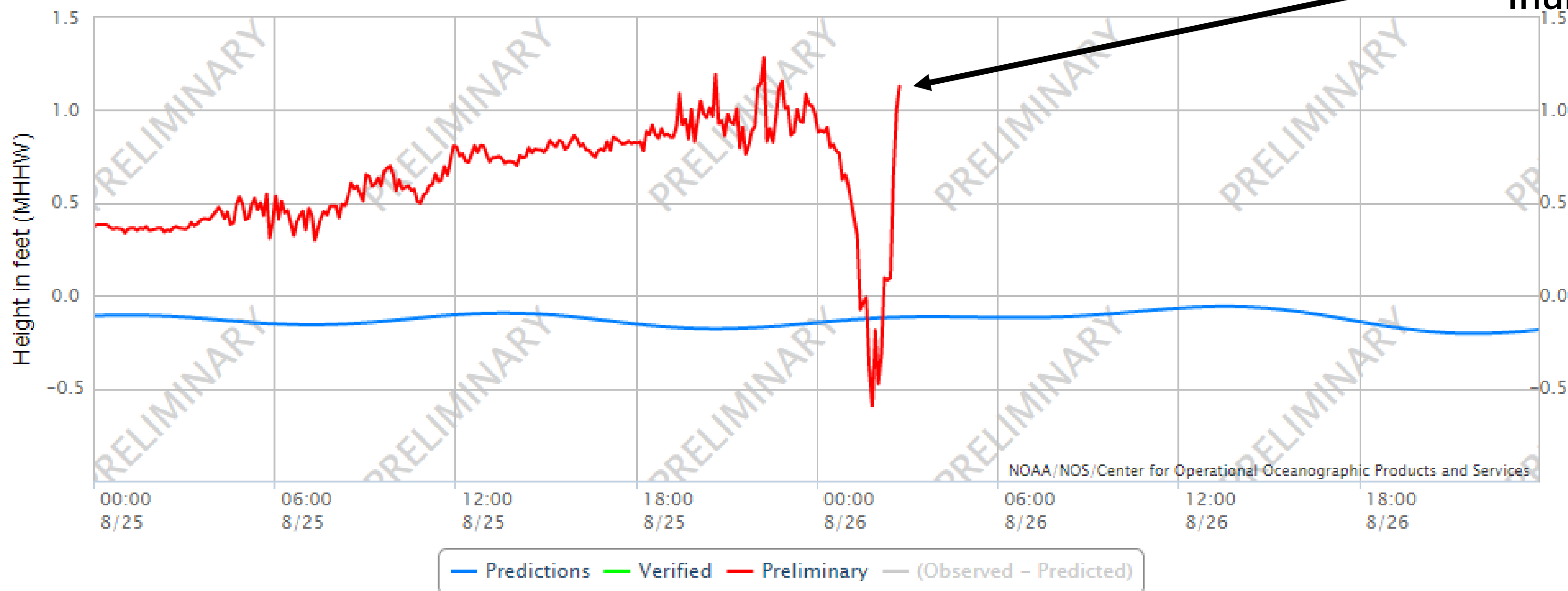
Hurricane Harvey



**Life-threatening Surge expected  
of 9 to 13 feet above ground level (inundation)**

## Rockport

NOAA/NOS/CO-OPS  
Observed Water Levels at 8774770, Rockport TX  
From 2017/08/25 00:00 GMT to 2017/08/26 23:59 GMT

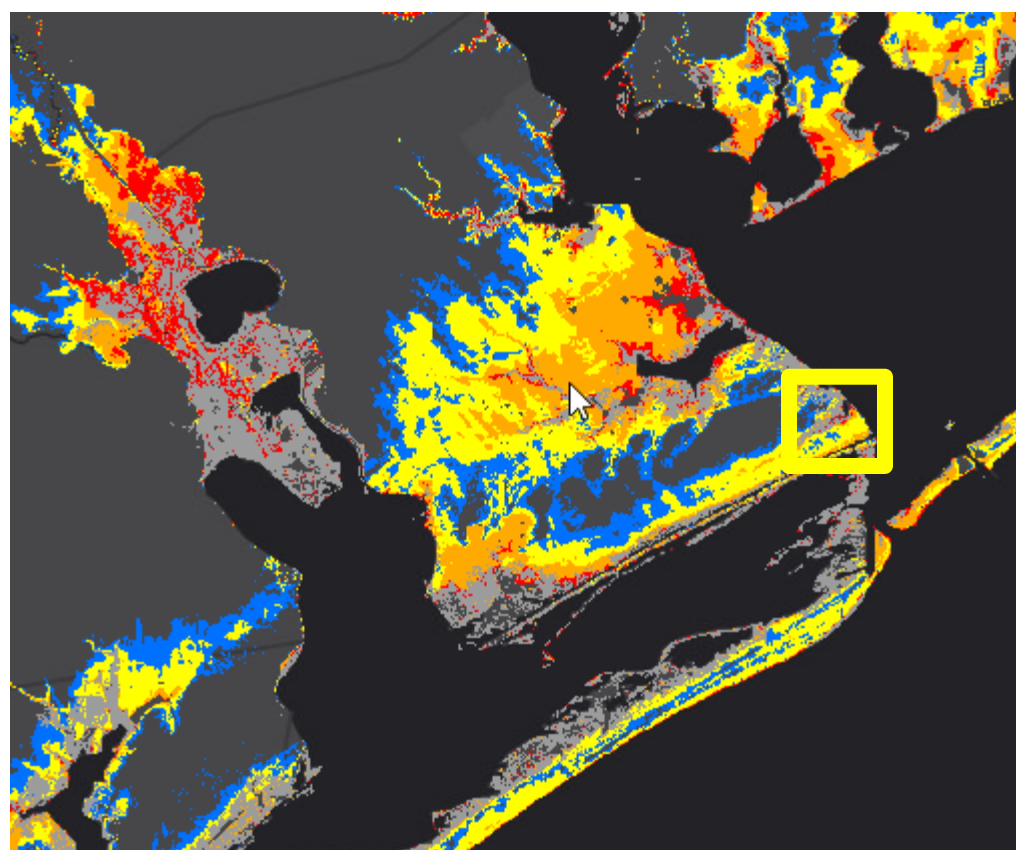


# Storm Surge Observations



Corpus Christi  
WEATHER FORECAST OFFICE

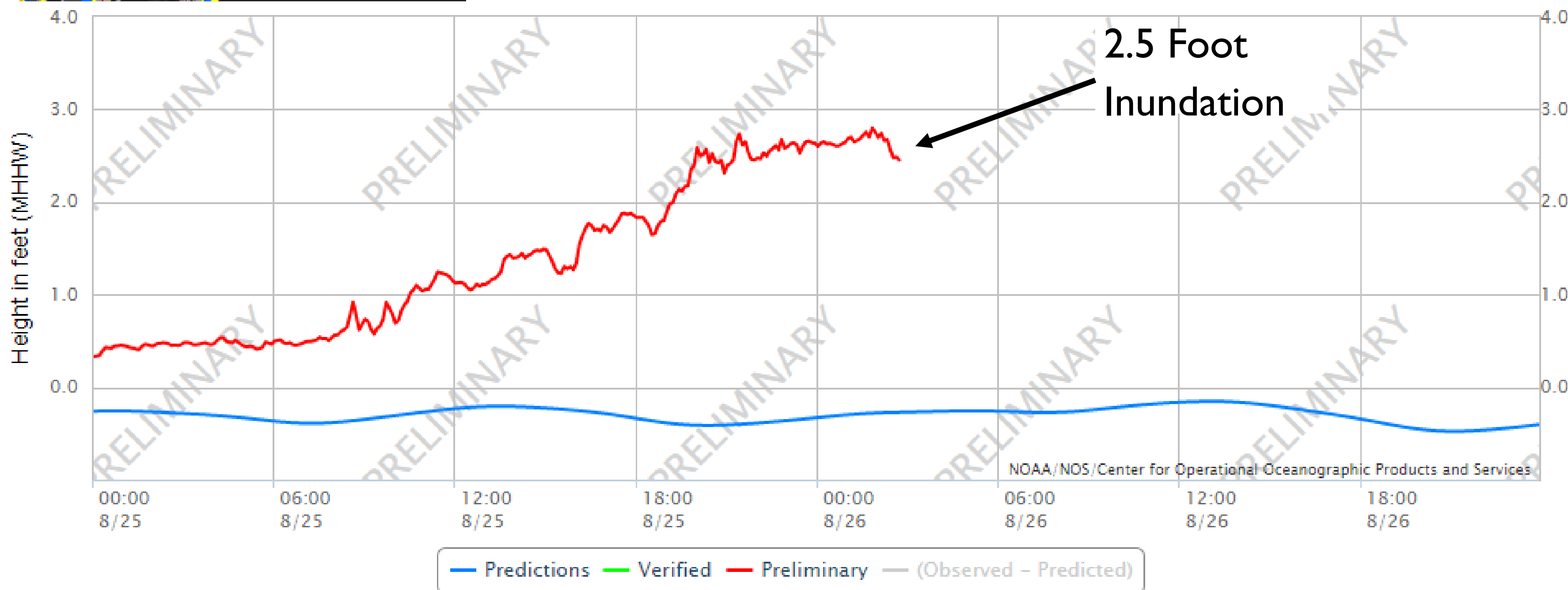
Hurricane Harvey



**Life-threatening Surge expected  
of 9 to 13 feet above ground level (inundation)**

## Port O'Connor

Observed Water Levels at 8773701, Port OConnor TX  
From 2017/08/25 00:00 GMT to 2017/08/26 23:59 GMT





- Harvey remains Category 4 hurricane with maximum sustained winds 130 mph with gusts 160 mph. Pressure down to 938 mbs.
- Center of eye made landfall near Rockport as a Category 4 hurricane
- Extreme Wind Warning ongoing for SW Calhoun, Aransas, E San Patricio, and central Refugio counties  
Very destructive winds and storm surge will continue to impact these communities!



- Deepest water will occur along the immediate coast and northeast of landfall location accompanied by large destructive waves. Includes Port Aransas, Aransas Pass, Rockport, Fulton, Bayside, Lamar Peninsula, and Austwell.
- Catastrophic and life-threatening flooding is expected as Harvey stalls over the mid Texas coast through early next week! Rainfall totals 15 to 25” max 40”



# HURRICANE HARVEY BRIEFING

*Next update 1AM Saturday*

*You can get the latest graphics and information on this storm at [www.hurricanes.gov](http://www.hurricanes.gov)*



NWSCorpus

[www.weather.gov/CorpusChristi](http://www.weather.gov/CorpusChristi)