



# HURRICANE HARVEY BRIEFING

7 PM CDT  
Friday, August 25, 2017

Prepared by:  
John Metz





- Harvey is now Category 4 hurricane with maximum sustained winds 140 mph with gusts 160 mph!
- Pressure down to 941 mbs.
- Dangerous eyewall will approach:
  - Port Aransas now!
  - Aransas Pass and Rockport by 7-8 pm
  - Bayside by 9pm

Very destructive winds and storm surge of 9 to 13 feet above ground level will impact these communities!



- Hurricane Force winds are now battering the coastal areas. Wind gusts over 100 mph have been observed in past hour.
- Deepest water will occur along the immediate coast and northeast of landfall location accompanied by large destructive waves. Includes Port Aransas, Aransas Pass, Rockport, Fulton, Bayside, Lamar Peninsula, and Austwell.
- Catastrophic and life-threatening flooding is expected as Harvey stalls over the mid Texas coast through early next week! Rainfall totals 15 to 25” max 40”

# Rainfall Totals thru 6pm

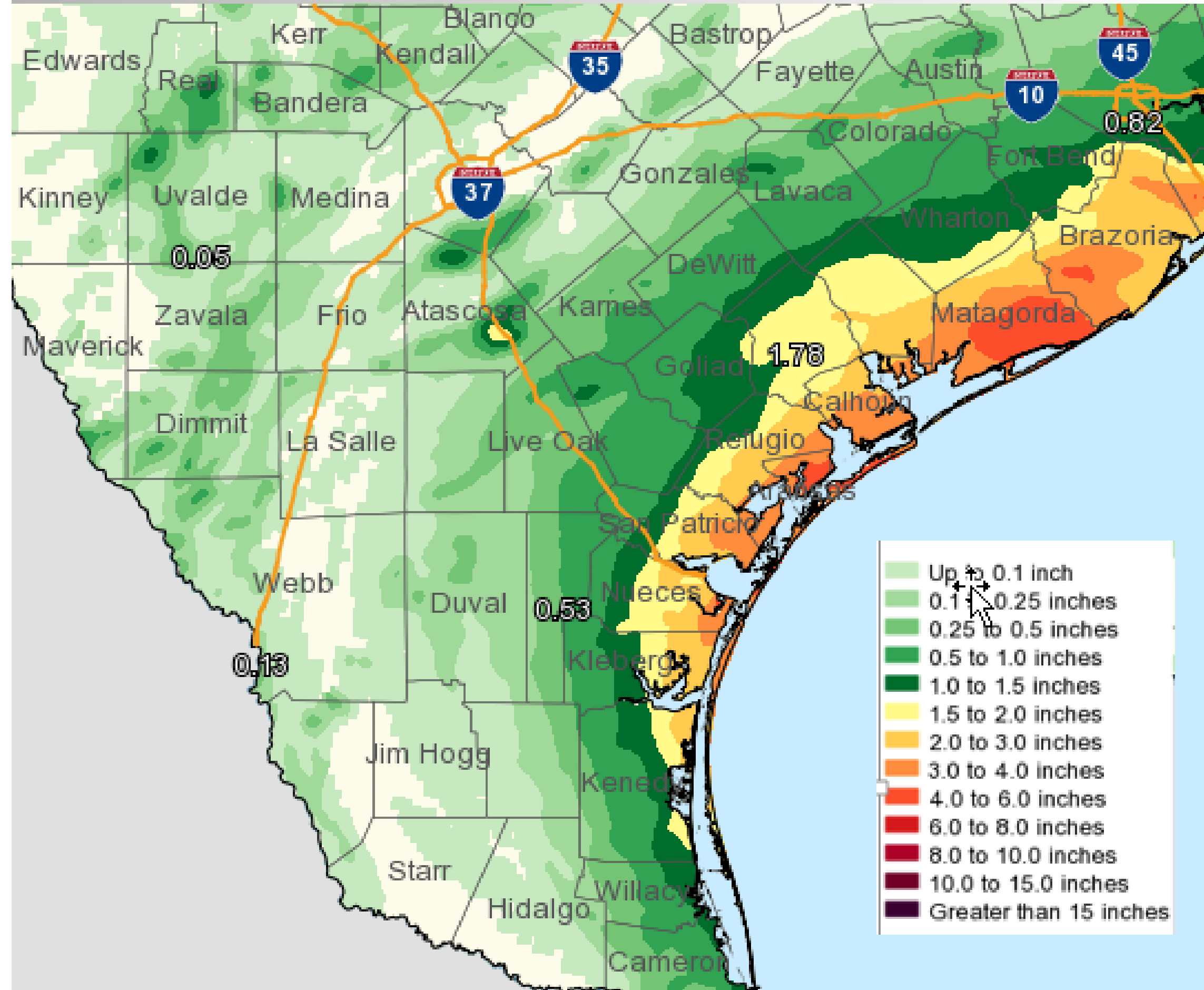


Corpus Christi  
WEATHER FORECAST OFFICE

## Hurricane Harvey

Location	Amount
6 SSE Austwell	4.21 in
14 ENE Fulton	3.96 in
6 SSE Austwell	3.93 in
1 SSE Kamay	2.46 in
2 SW Victoria	2.31 in
San Antonio River Near Mcfad	2.31 in
3 NNE Tivoli	2.22 in
3 S Telferner	2.17 in
Garcitas <u>Creek</u> Near Inez	2.04 in
Victoria	2.00 in
4 ENE Victoria	1.98 in
1 E Victoria	1.92 in
5 W Corpus Christi	1.79 in
1 N Inez	1.76 in
4 ENE Robstown	1.56 in
1 SSE Aransas Pass	1.50 in
Coleta <u>Creek</u> At Arnold Road	1.41 in
3 NNW Schroeder	1.31 in
<u>Abv</u> Nueces Rv	0.95 in
5 W Flour Bluff	0.70 in

Valid Ending Friday August 25th, 2017 at 5 PM CDT



# Current Satellite View



Corpus Christi  
WEATHER FORECAST OFFICE

Hurricane Harvey

## Current Situation:

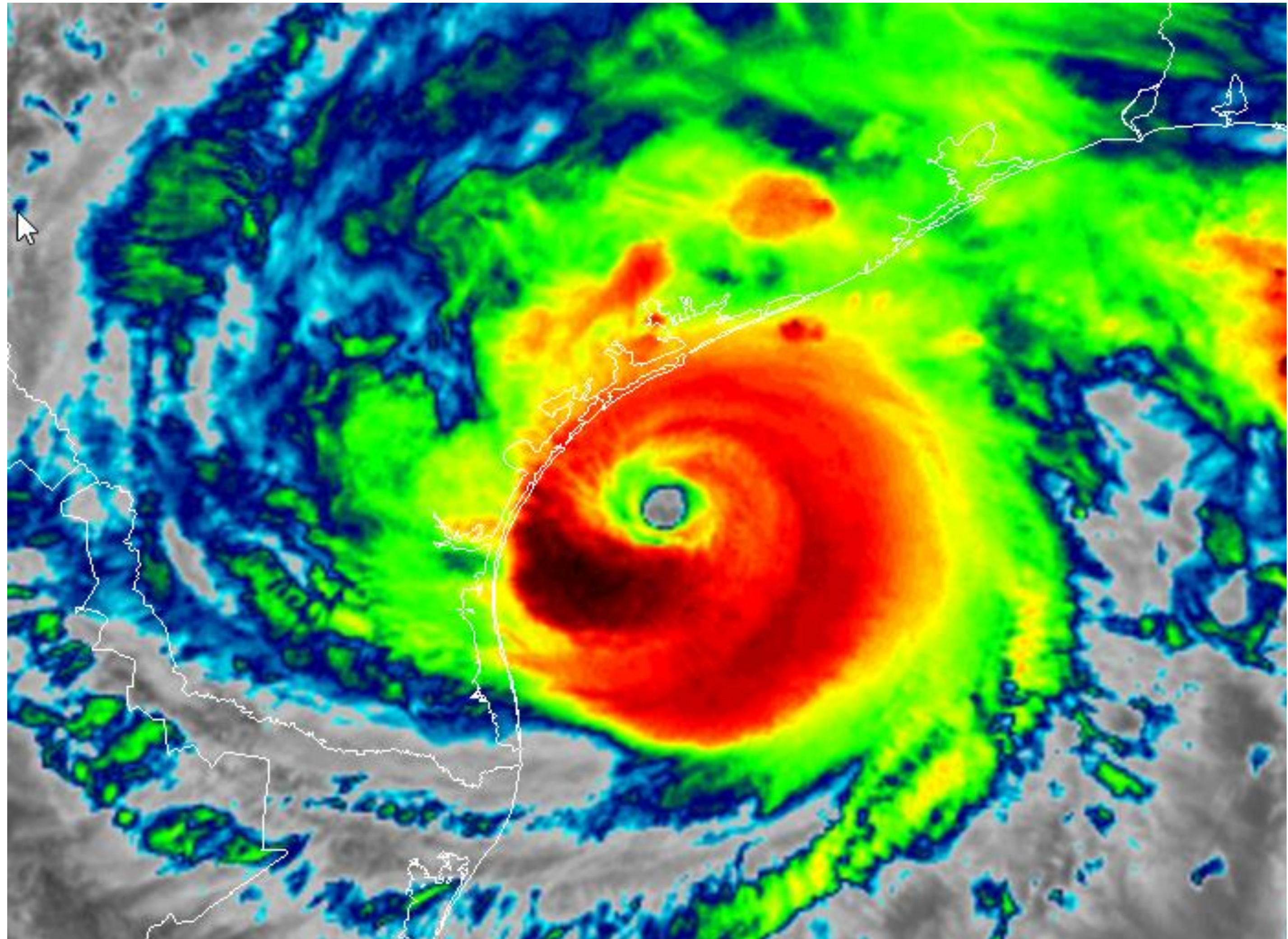
Winds: 130 mph

Motion: NW 8 mph

Pressure: 941 mb

Category: 3

Location: 45 miles  
E of Corpus Christi



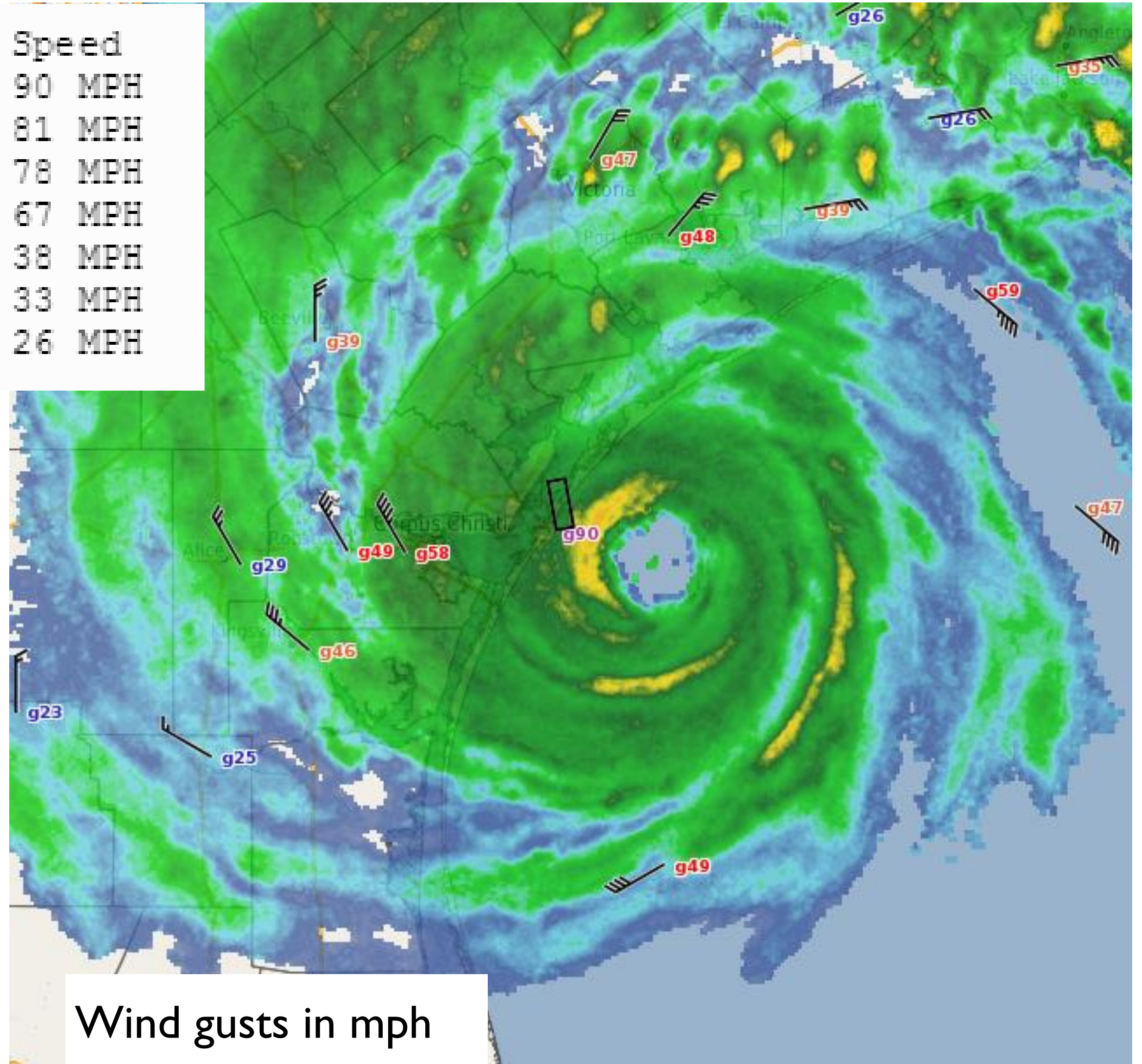
# Peak Wind Reports thru 6pm



Corpus Christi  
WEATHER FORECAST OFFICE

## Hurricane Harvey

Location	Speed
8 SE Aransas Pass	90 MPH
4 ESE Flour Bluff	81 MPH
7 SE Aransas Pass	78 MPH
10 SE Chapman Ranch	67 MPH
1 N Inez	38 MPH
3 NW Victoria	33 MPH
3 NNW Schroeder	26 MPH



# Situation Overview



Corpus Christi  
WEATHER FORECAST OFFICE

## Hurricane Harvey



### Landfall Forecast:

- On track to make landfall just east of Corpus Christi this evening, making direct strike on Port Aransas, Aransas Pass, Rockport, Fulton, Lamar Peninsula, Bayside and Refugio!

### Arrival of Hurricane Eyewall expected:

- Port Aransas now.
- Aransas Pass and Rockport 8-9pm
- Bayside late evening

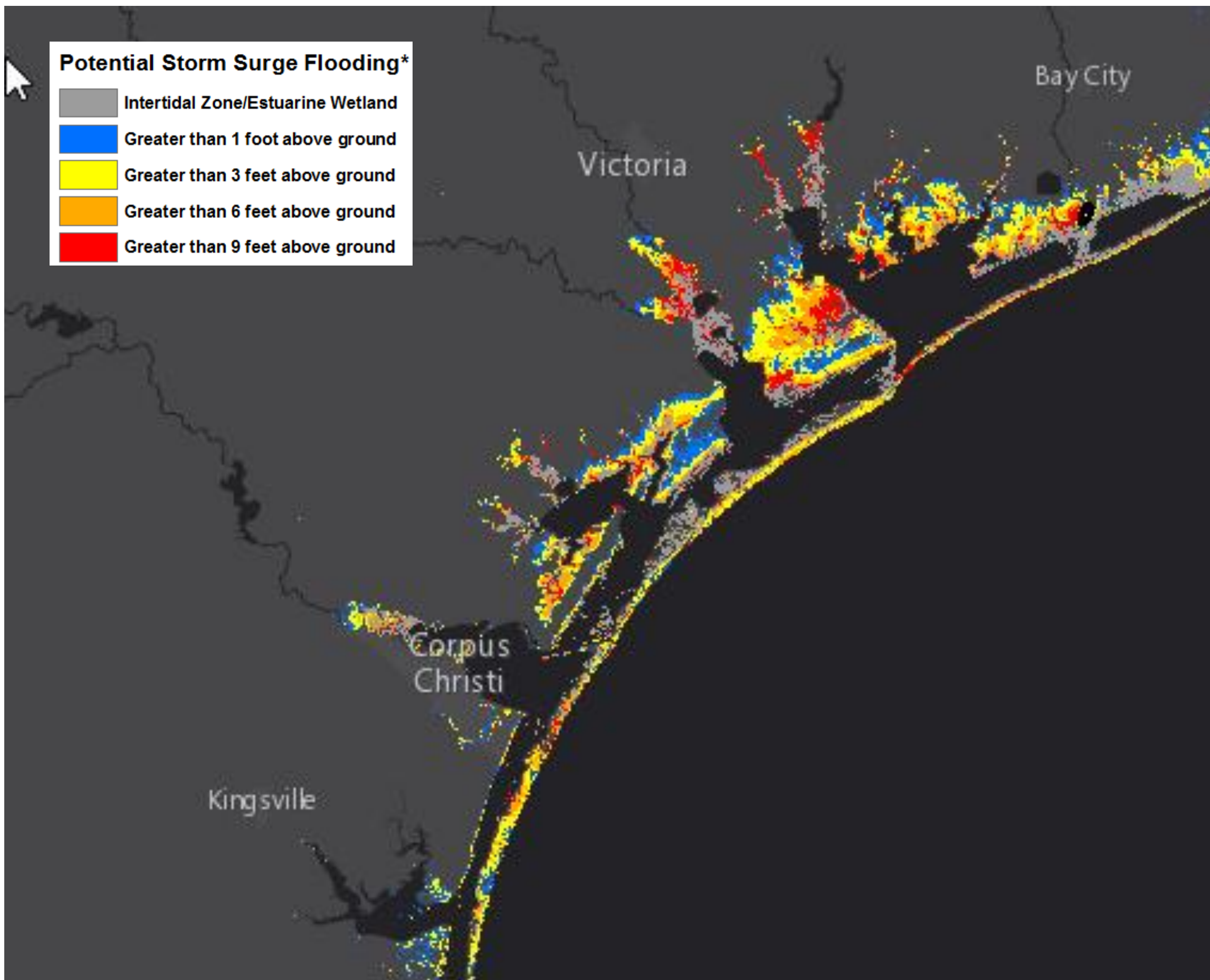
**NOTE:** Do not focus on the exact track. Impacts can occur well outside the area enclosed by the cone.

# Potential Storm Surge



Corpus Christi  
WEATHER FORECAST OFFICE

## Hurricane Harvey



**Reasonable Worst Case Scenario Map**

## Areas of greatest risk:

- Plan for peak storm surge flooding of 9-13 feet above ground level with large destructive waves. South of Mustang Island storm surge flooding 4-8 feet above ground level.

## Timing

- Life threatening storm surge inundation beginning now with peak tonight and Saturday.

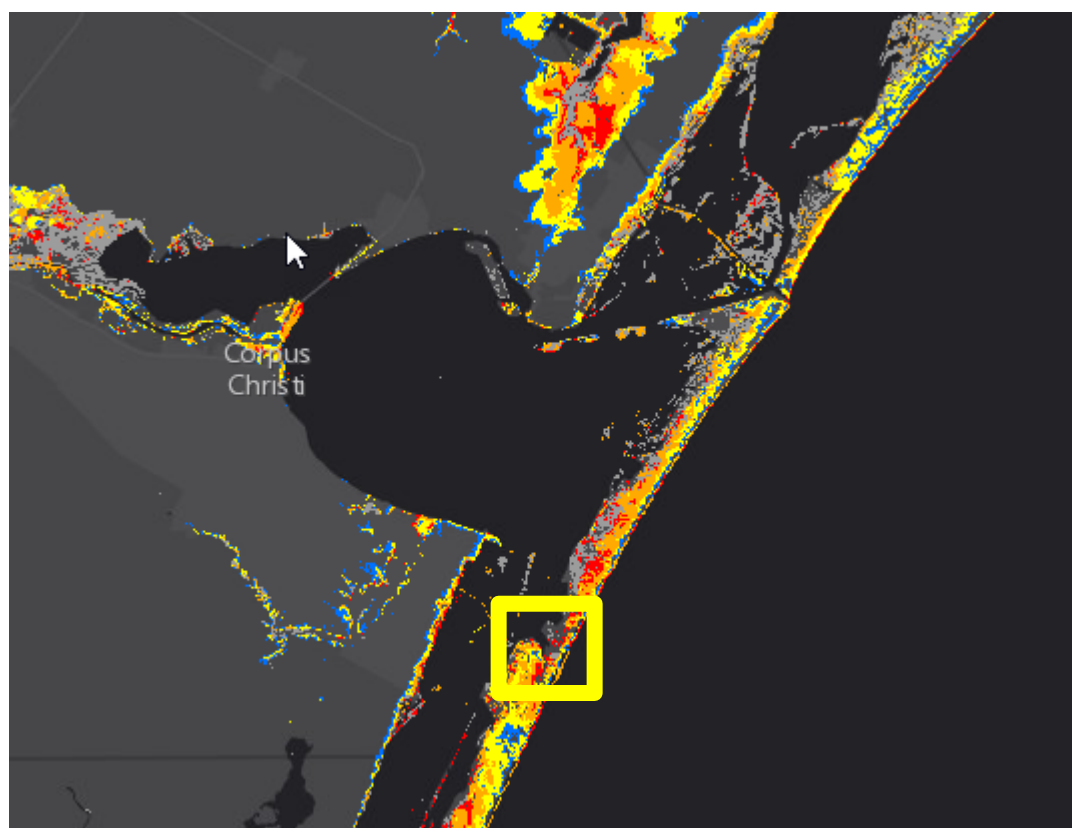


# Storm Surge Observations



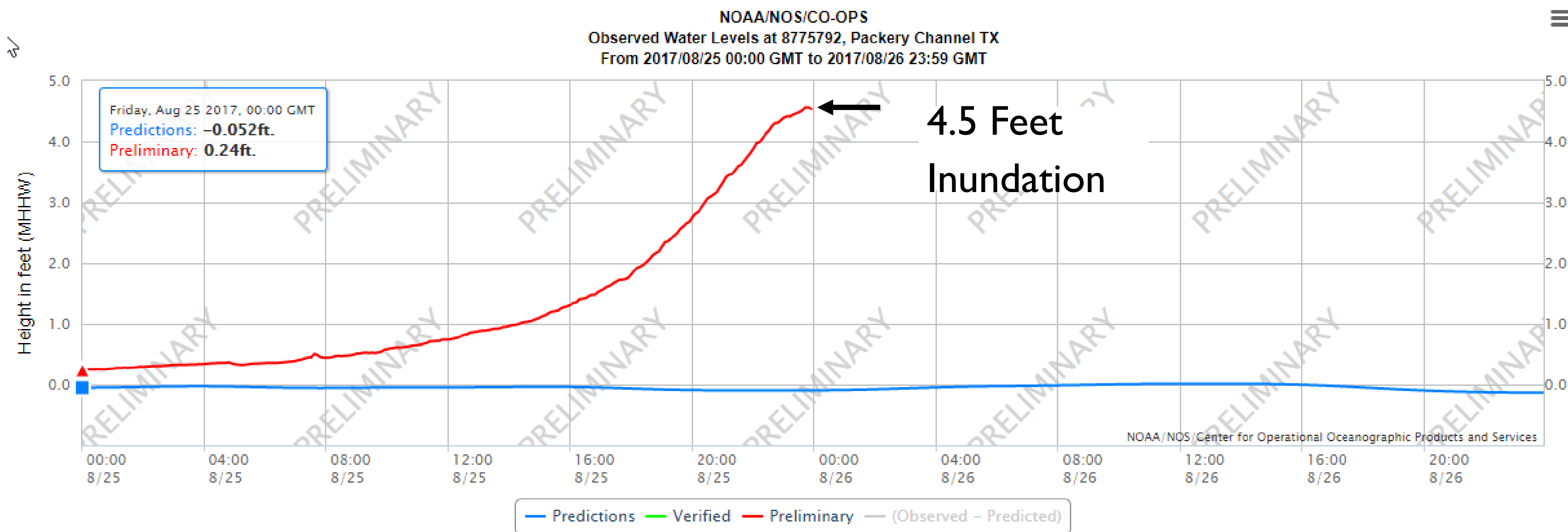
Corpus Christi  
WEATHER FORECAST OFFICE

Hurricane Harvey



**Life-threatening Surge expected  
of 4 to 8 feet above ground level (inundation)**

## Packery Channel

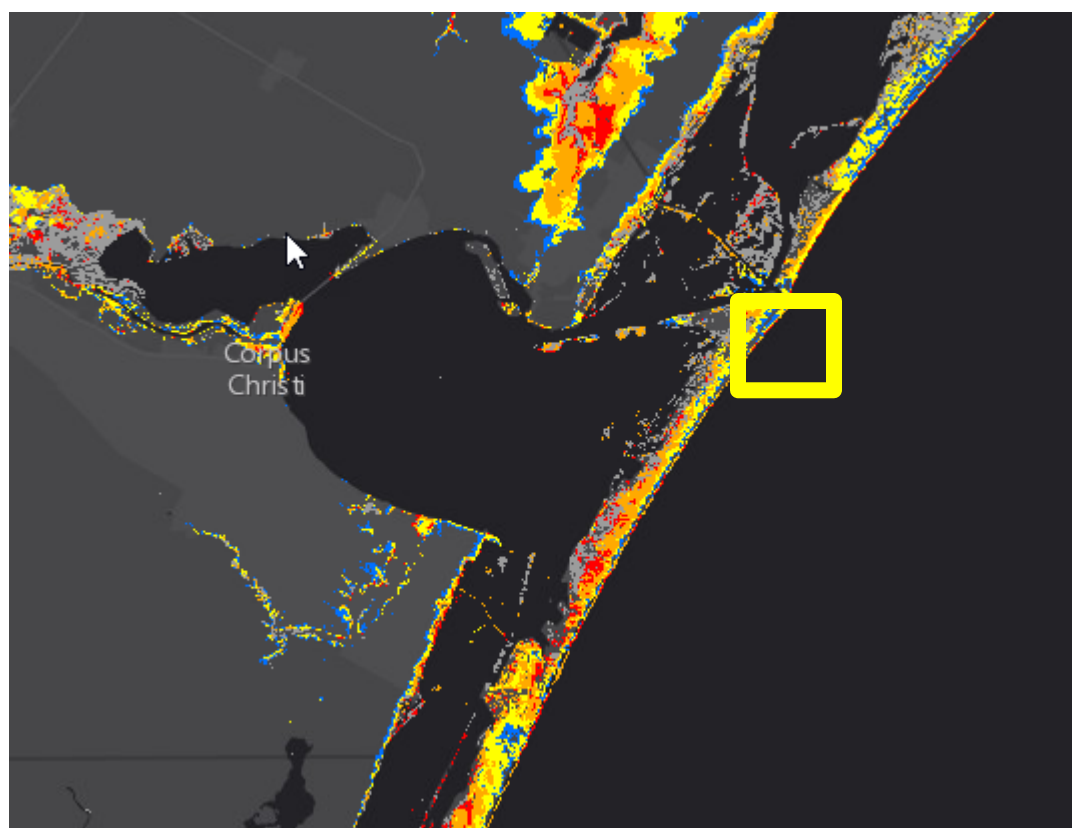


# Storm Surge Observations



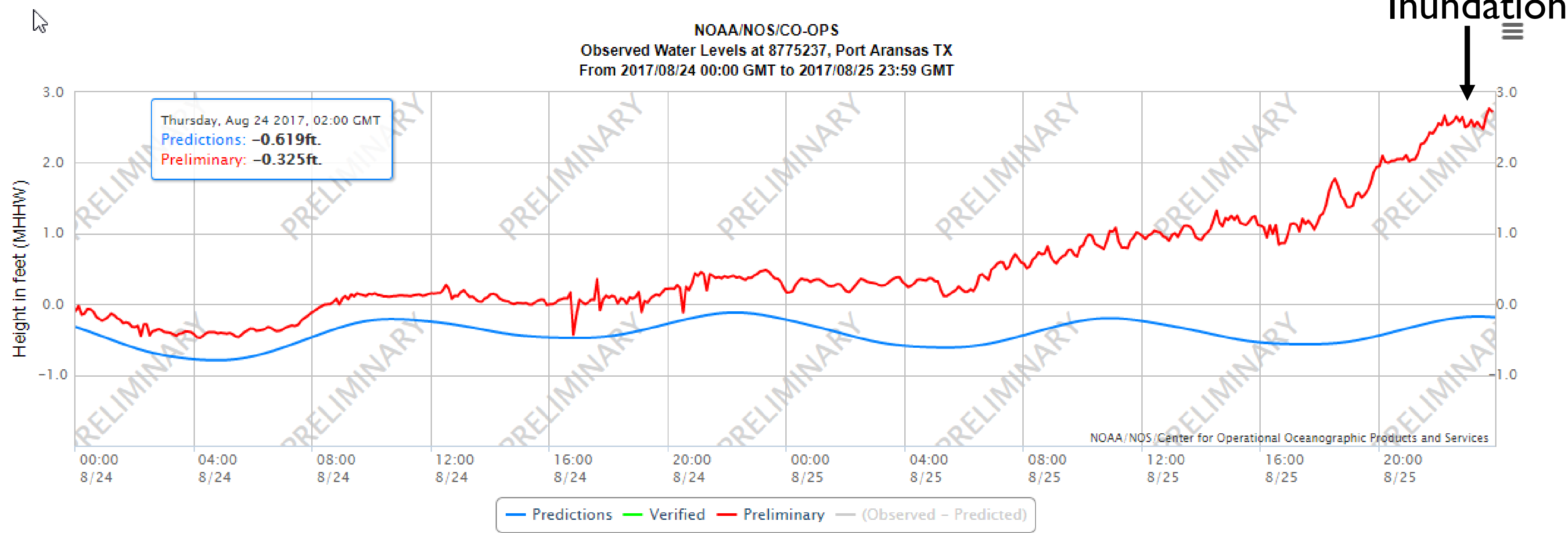
Corpus Christi  
WEATHER FORECAST OFFICE

Hurricane Harvey



**Life-threatening Surge expected  
of 9 to 13 feet above ground level (inundation)**

## Port Aransas

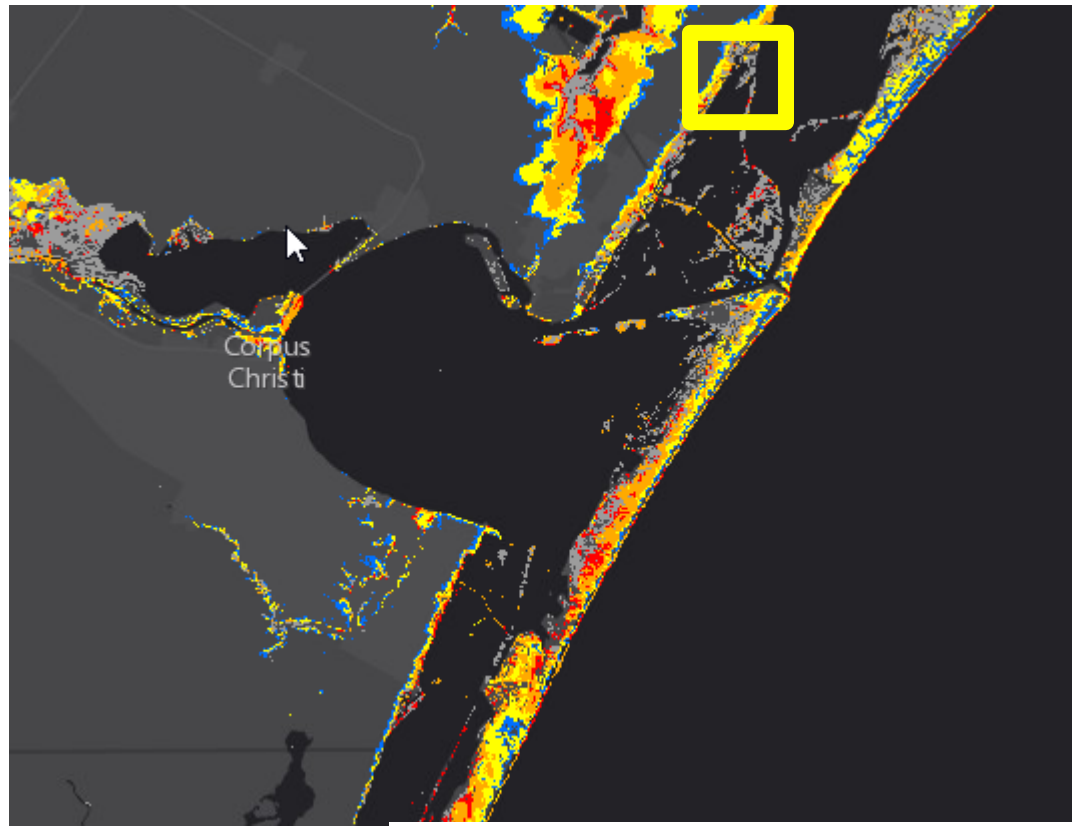


# Storm Surge Observations



Corpus Christi  
WEATHER FORECAST OFFICE

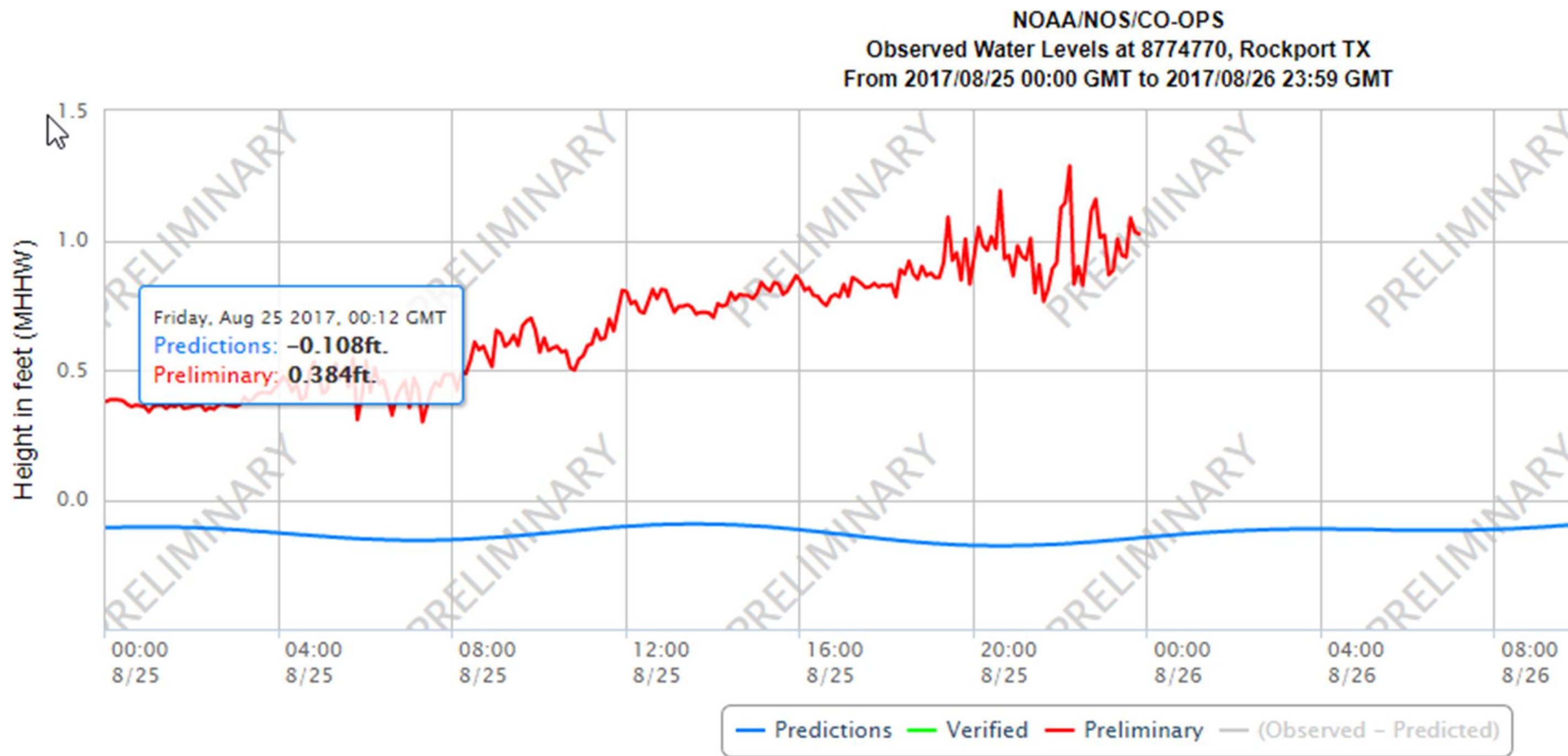
Hurricane Harvey



**Life-threatening Surge expected  
of 9 to 13 feet above ground level (inundation)**

## Rockport

1.3 Foot  
Inundation

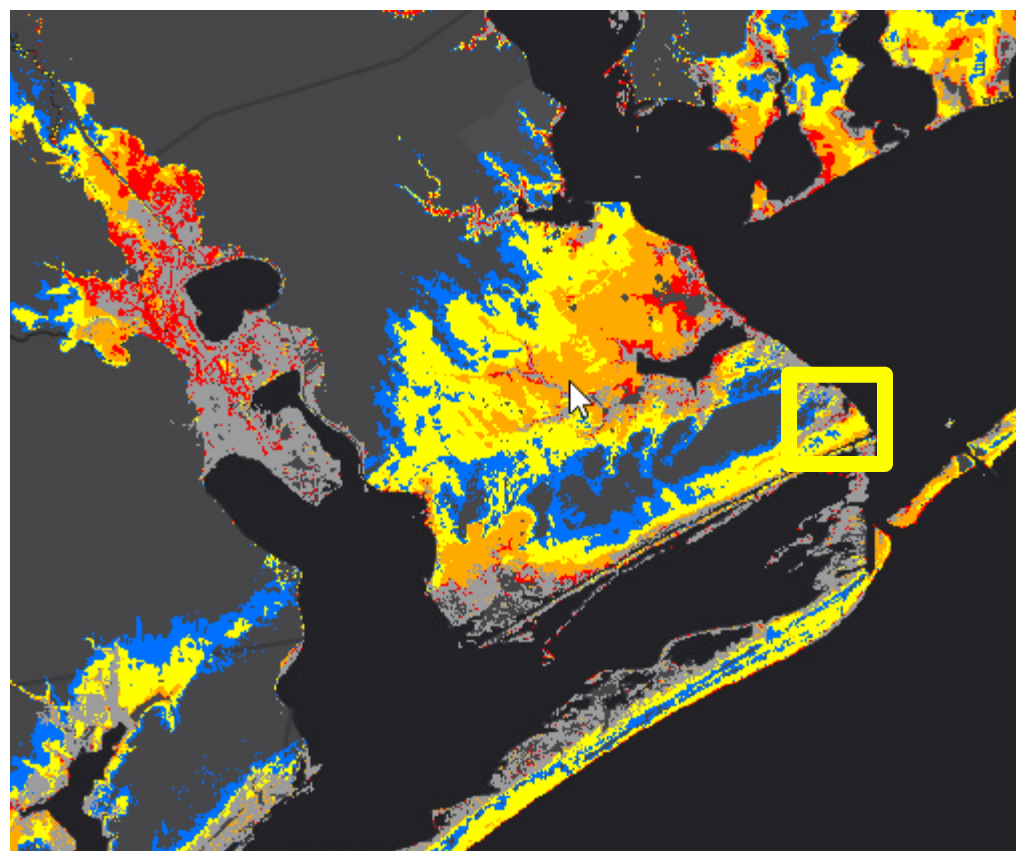


# Storm Surge Observations



Corpus Christi  
WEATHER FORECAST OFFICE

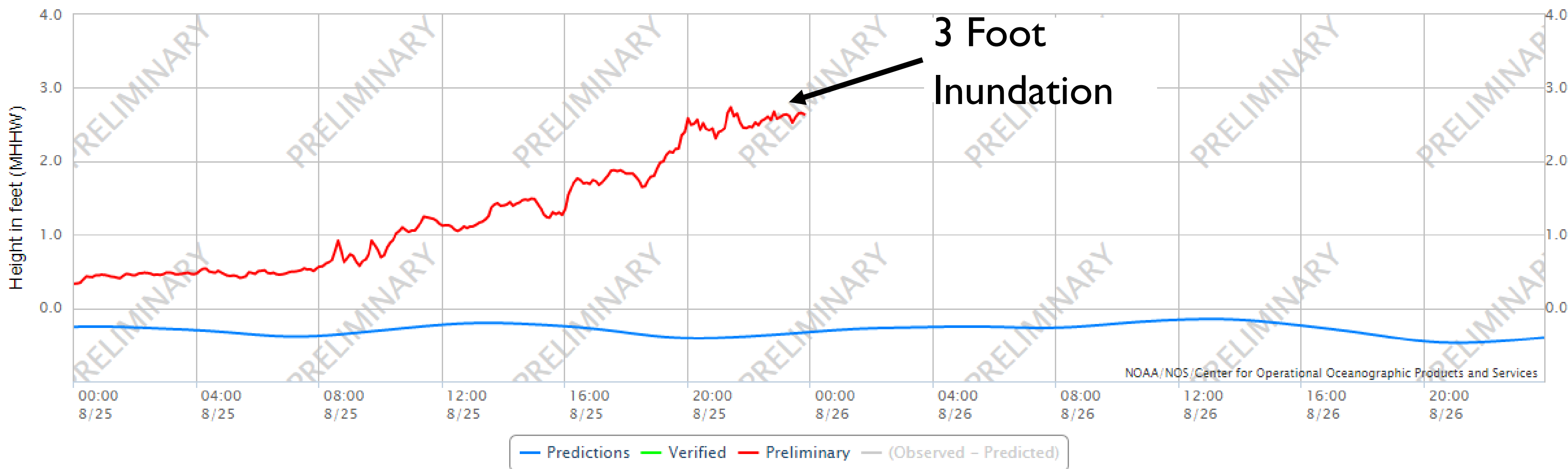
Hurricane Harvey



**Life-threatening Surge expected  
of 9 to 13 feet above ground level (inundation)**

## Port O'Connor

NOAA/NOS/CO-OPS  
Observed Water Levels at 8773701, Port OConnor TX  
From 2017/08/25 00:00 GMT to 2017/08/26 23:59 GMT





- Harvey is now Category 4 hurricane with maximum sustained winds 130 mph with gusts 160 mph. Pressure down to 941 mbs.
- Dangerous eyewall will approach:
  - Port Aransas now.
  - Aransas Pass and Rockport 8-9pm
  - Bayside late evening

Very destructive winds and storm surge will impact these communities!



- Hurricane Force winds are now battering the coastal areas. Wind gusts over 100 mph have been observed in past hour.
- Deepest water will occur along the immediate coast and northeast of landfall location accompanied by large destructive waves. Includes Port Aransas, Aransas Pass, Rockport, Fulton, Bayside, Lamar Peninsula, and Austwell.
- Catastrophic and life-threatening flooding is expected as Harvey stalls over the mid Texas coast through early next week! Rainfall totals 15 to 25” max 40”



# HURRICANE HARVEY BRIEFING

*Next update 11 pm Tonight*

*You can get the latest graphics and information on this storm at [www.hurricanes.gov](http://www.hurricanes.gov)*



NWSCorpus

[www.weather.gov/CorpusChristi](http://www.weather.gov/CorpusChristi)