



HURRICANE HARVEY BRIEFING

5 PM CDT
Thursday, August 24, 2017

Prepared by:
John Metz



What's Changed

Hurricane Harvey



Corpus Christi
WEATHER FORECAST OFFICE

- Hurricane Harvey is heading toward the Texas coast. Maximum sustained winds currently 85 mph.
- We are expecting a major hurricane with max winds 125 mph at landfall somewhere between Port Aransas and Port O'Connor!
- Life-threatening Storm Surge inundation expected along mid coast of 6 to 12 feet above ground level.
- Rainfall Totals 15-25" with isolated 35" maximum. Life-threatening, devastating, record flooding Expected!
- Isolated tornadoes beginning Friday morning

Watch Summary

Hurricane Harvey



Corpus Christi
WEATHER FORECAST OFFICE

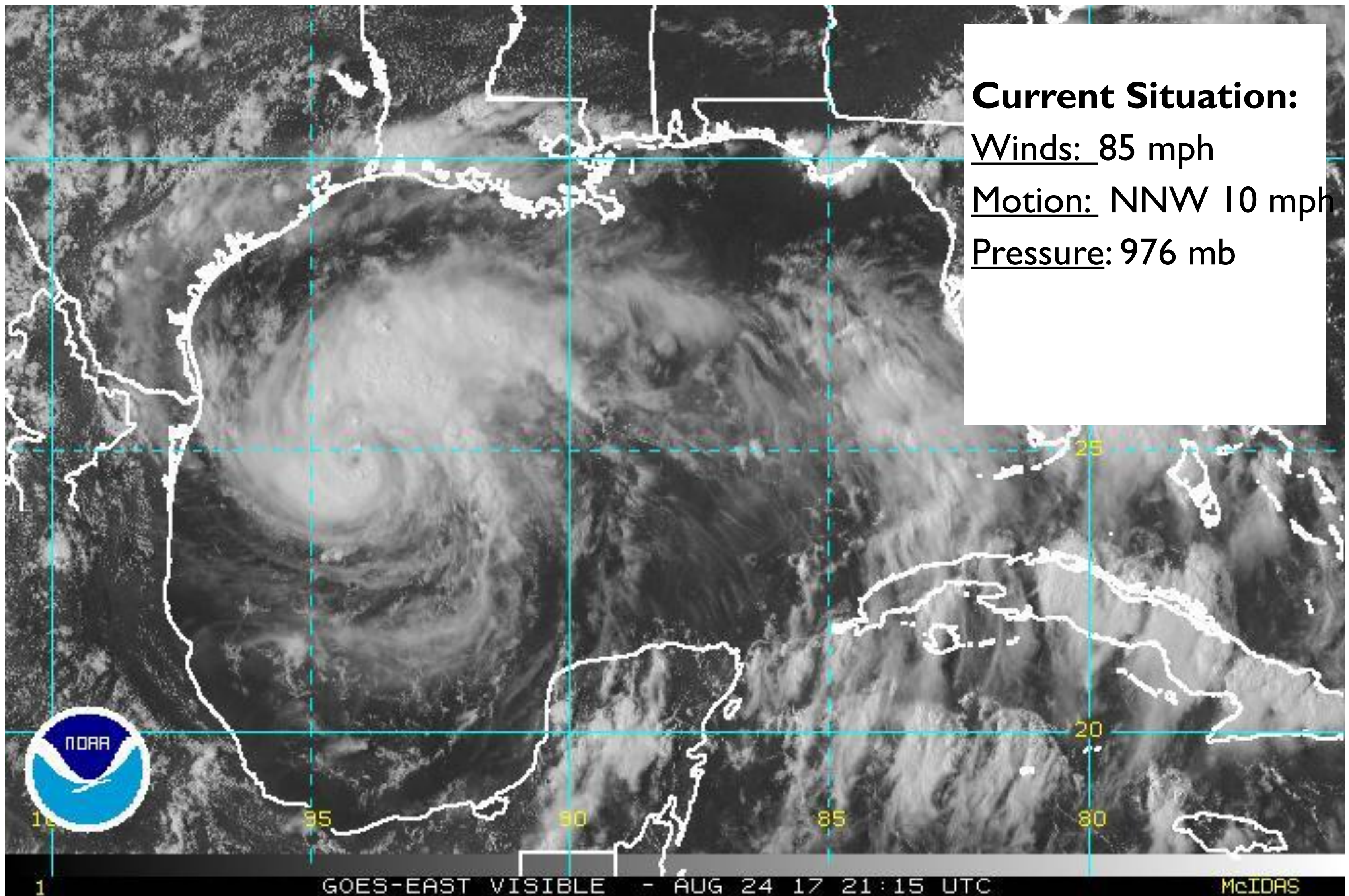
- Hurricane Warning is in effect from Port Mansfield to Sargent
- Storm Surge Warning is in effect from Port Mansfield to High Island
- Flash Flood Watch is in effect for most of South TX

Current Satellite View



Corpus Christi
WEATHER FORECAST OFFICE

Hurricane Harvey



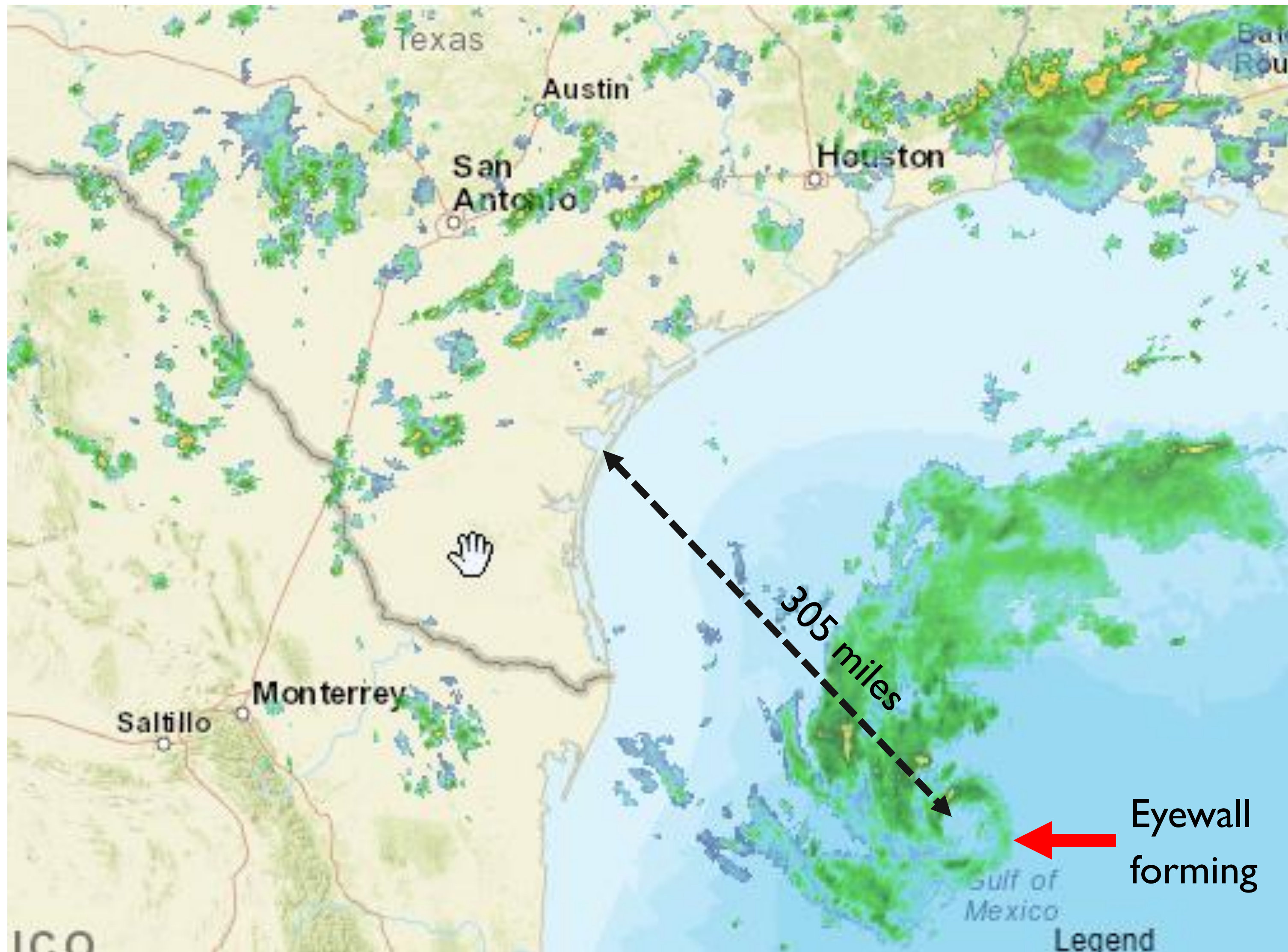
Current Situation:
Winds: 85 mph
Motion: NNW 10 mph
Pressure: 976 mb

Current Radar View



Corpus Christi
WEATHER FORECAST OFFICE

Hurricane Harvey

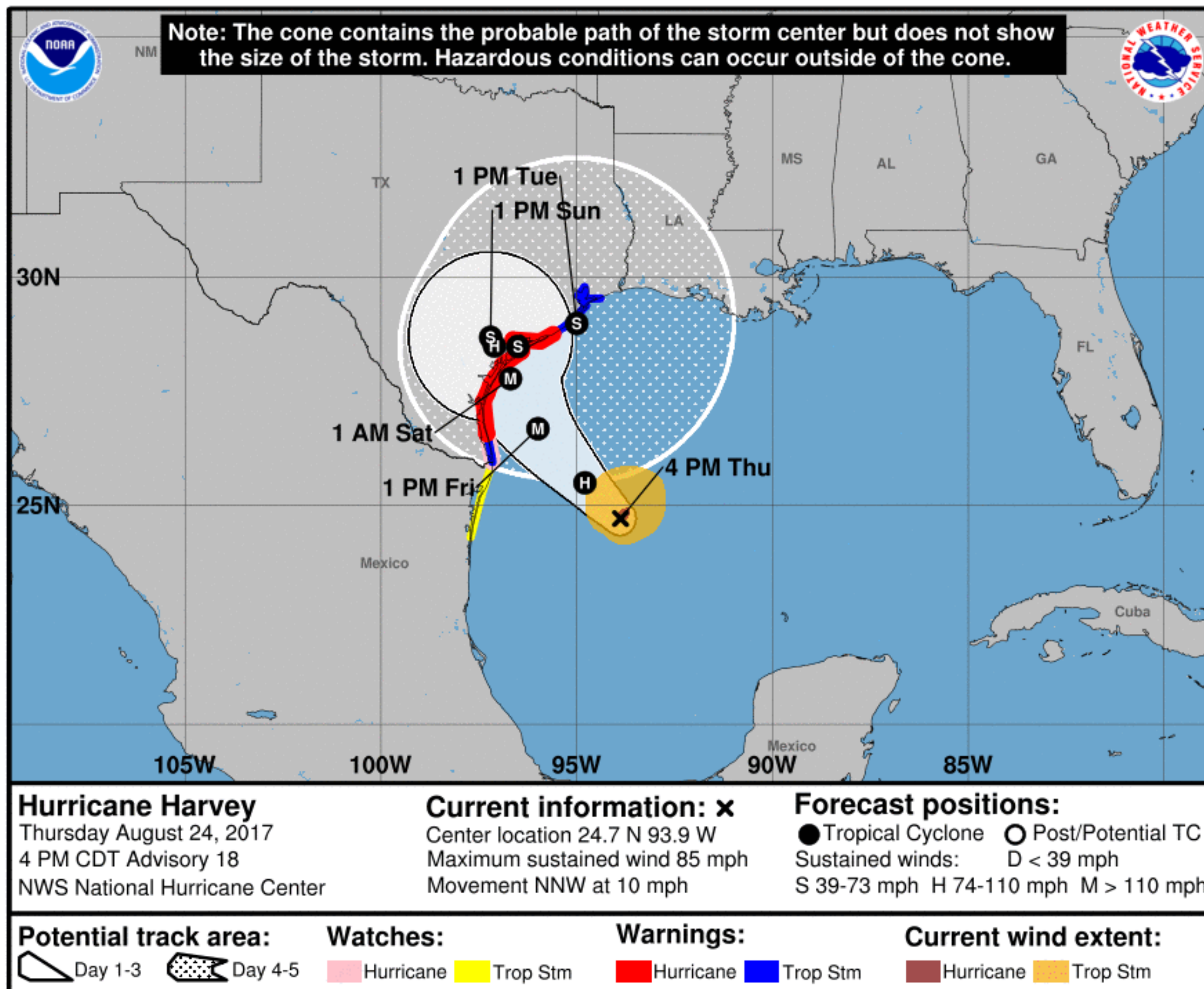


Situation Overview



Corpus Christi
WEATHER FORECAST OFFICE

Hurricane Harvey



- Harvey has max sustained winds 85 mph.
- Forecast to reach major hurricane strength with max sustained winds 125 mph near the storm center.
- Landfall between Port Aransas and Port O'Connor Friday Night

NOTE: Do not focus on the exact track. Impacts can occur well outside the area enclosed by the cone.

Hurricane Winds



Corpus Christi
WEATHER FORECAST OFFICE

Hurricane Harvey



- Trends show increasing probabilities and a focus between Port Aransas and Port O'Connor.

5 Day Cumulative probabilities

Wind Timing



Corpus Christi
WEATHER FORECAST OFFICE

Potential Tropical Cyclone Harvey

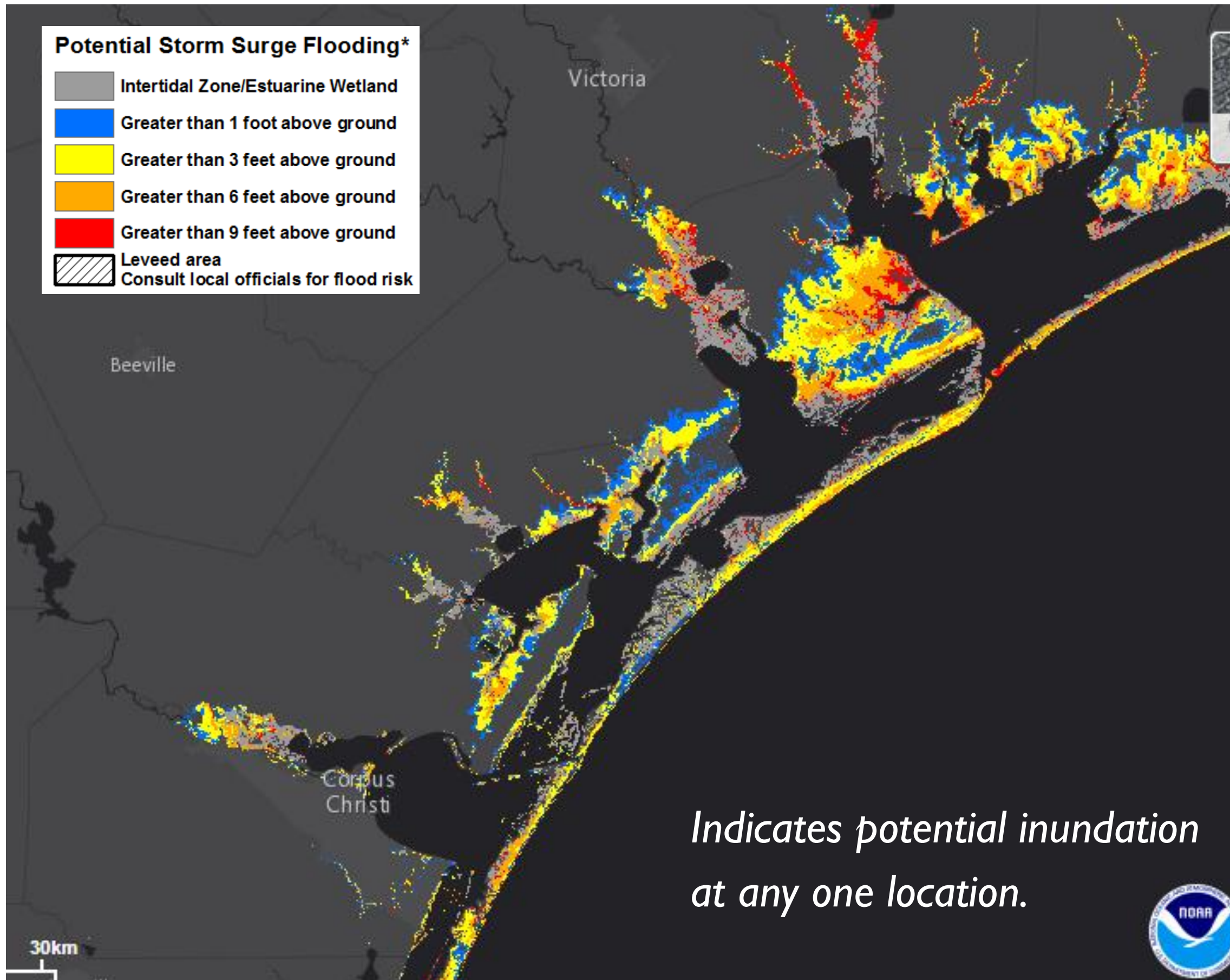
	Duration of Tropical Storm Force Winds Hurricane Force Winds	Peak Winds to Plan for:
Nueces	Friday Afternoon through Sunday Evening Friday Evening through Saturday Evening	Winds greater than 110 mph
San Patricio	Friday Afternoon through Monday Morning Friday Evening through Saturday Evening	Winds greater than 110 mph
Aransas	Friday Afternoon through Monday Morning Friday Evening through Saturday Evening	Winds greater than 110 mph Gusts 135 mph
Refugio	Friday Afternoon Through Monday Morning Friday Evening through Saturday Evening	Winds greater than 110 mph Gusts 125 mph
Calhoun	Friday Afternoon through Monday Morning Friday Evening through Saturday Evening	Winds greater than 110 mph Gusts 125 mph

Potential Storm Surge

Hurricane Harvey



Corpus Christi
WEATHER FORECAST OFFICE



Reasonable Worst Case Scenario Map

Areas of greatest risk:

- Plan for peak storm surge flooding of 6-12 feet above ground level along the Mid Texas Coast.

Timing

- Life Threatening Storm surge inundation will begin as early as Friday morning with peak Friday Night and Saturday.

Storm Surge By County



Corpus Christi
WEATHER FORECAST OFFICE

Potential Tropical Cyclone Harvey

	Onset of Storm Surge	Peak Surge Forecast:
Nueces	Friday Morning	4 to 7 feet AGL
San Patricio	Friday Morning	4 to 7 feet AGL
Aransas	Friday Morning	4 to 7 feet AGL
Refugio	Friday Evening	7 to 10 feet AGL
Calhoun	Friday Morning	8 to 12 feet AGL

Expected Storm Total Rainfall

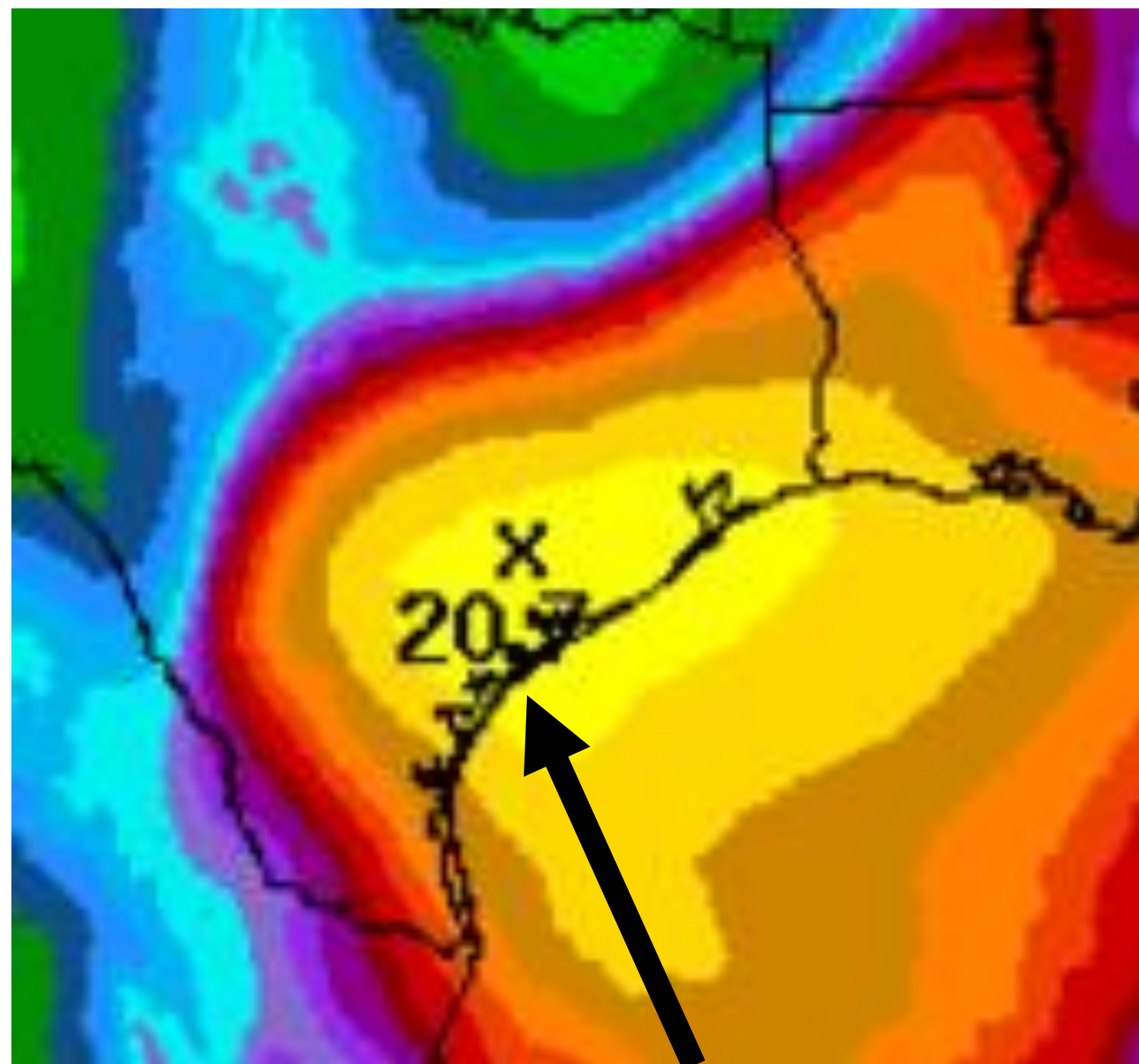


Corpus Christi
WEATHER FORECAST OFFICE

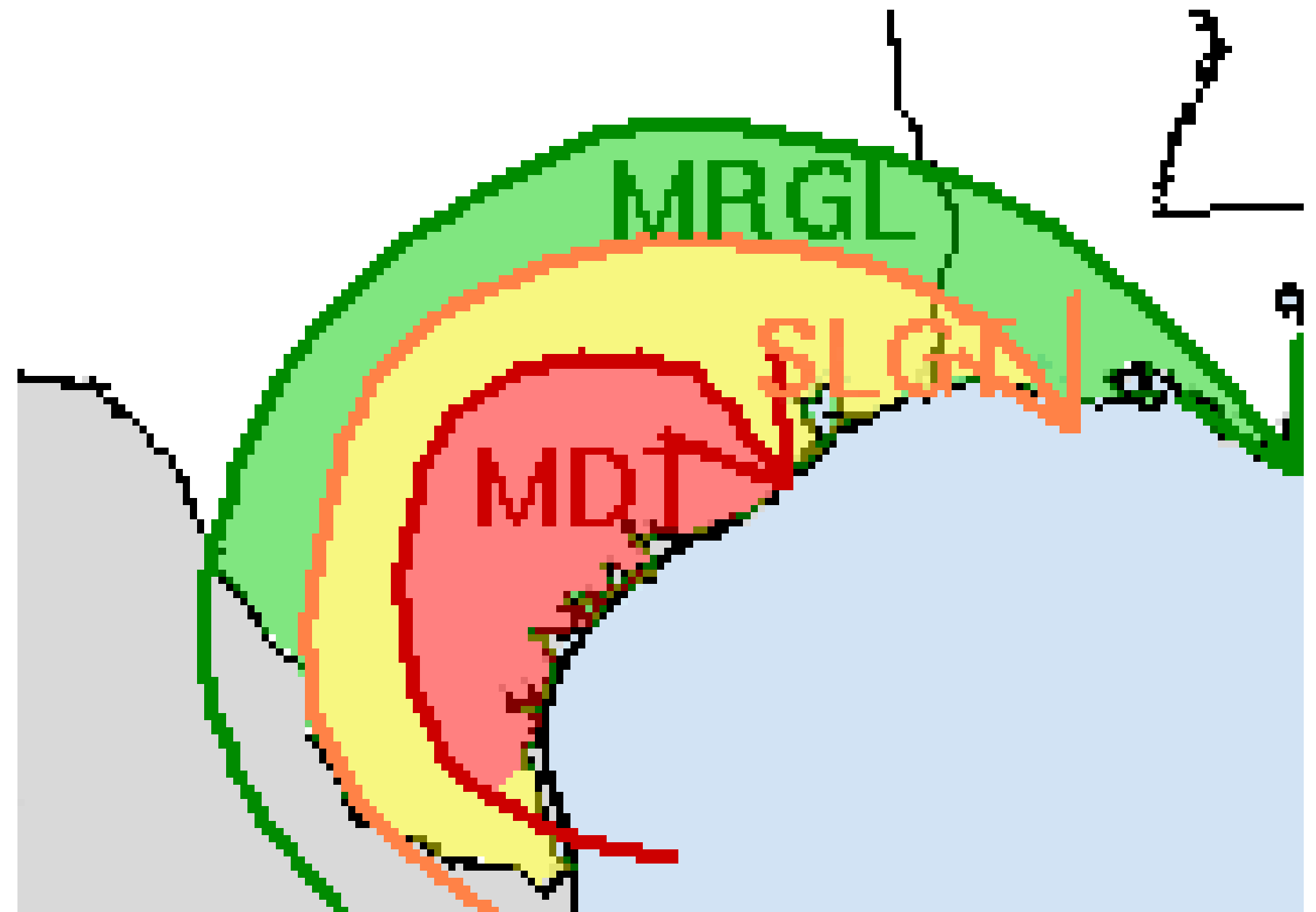
Hurricane Harvey

Life-threatening, devastating, record flooding Expected!

Storm total rainfall



Excessive Rainfall Forecast



Maximum Storm Total Rainfall amounts of 15-25" isolated amounts of 35" or more expected along the Mid Texas Coast (lesser amounts west of I-37)

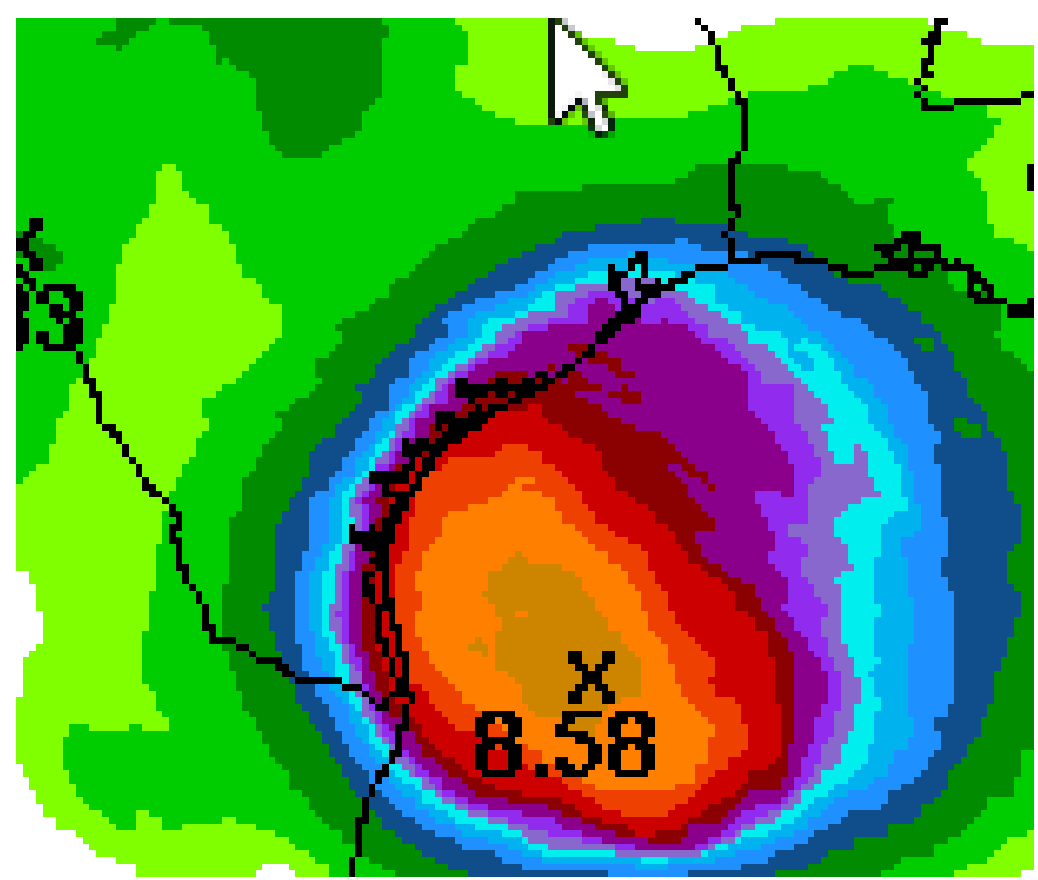
Expected Storm Total Rainfall



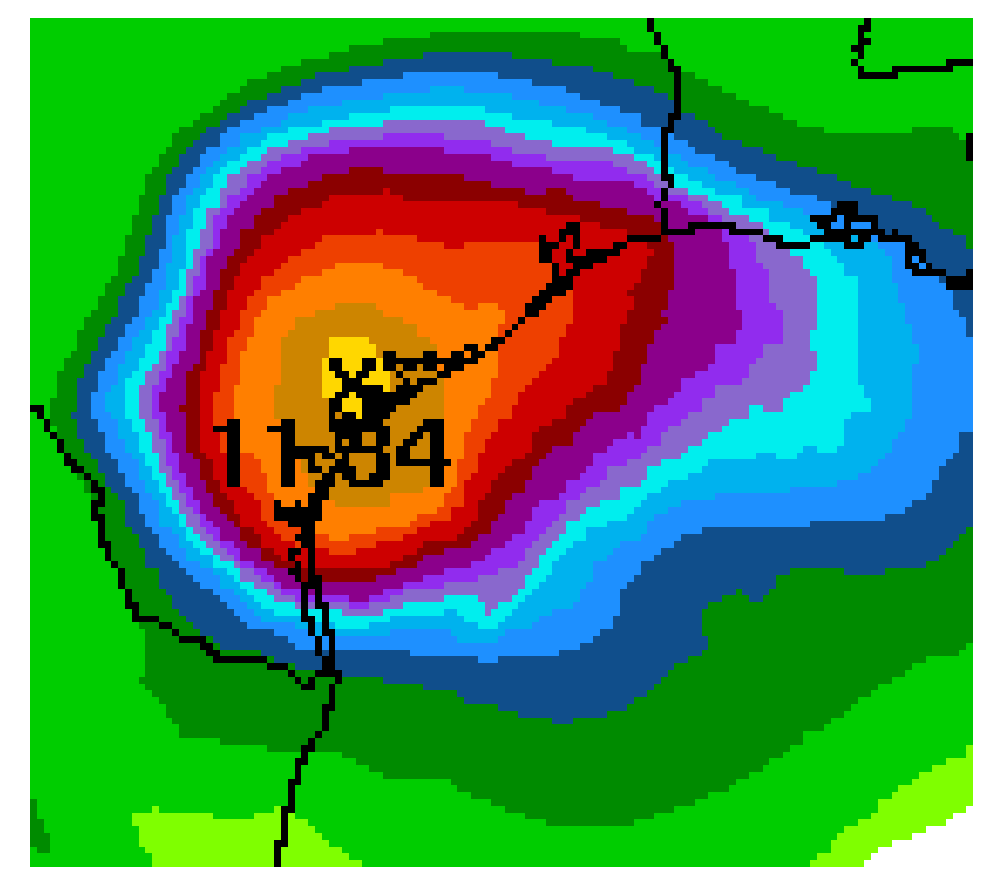
Corpus Christi
WEATHER FORECAST OFFICE

Hurricane Harvey

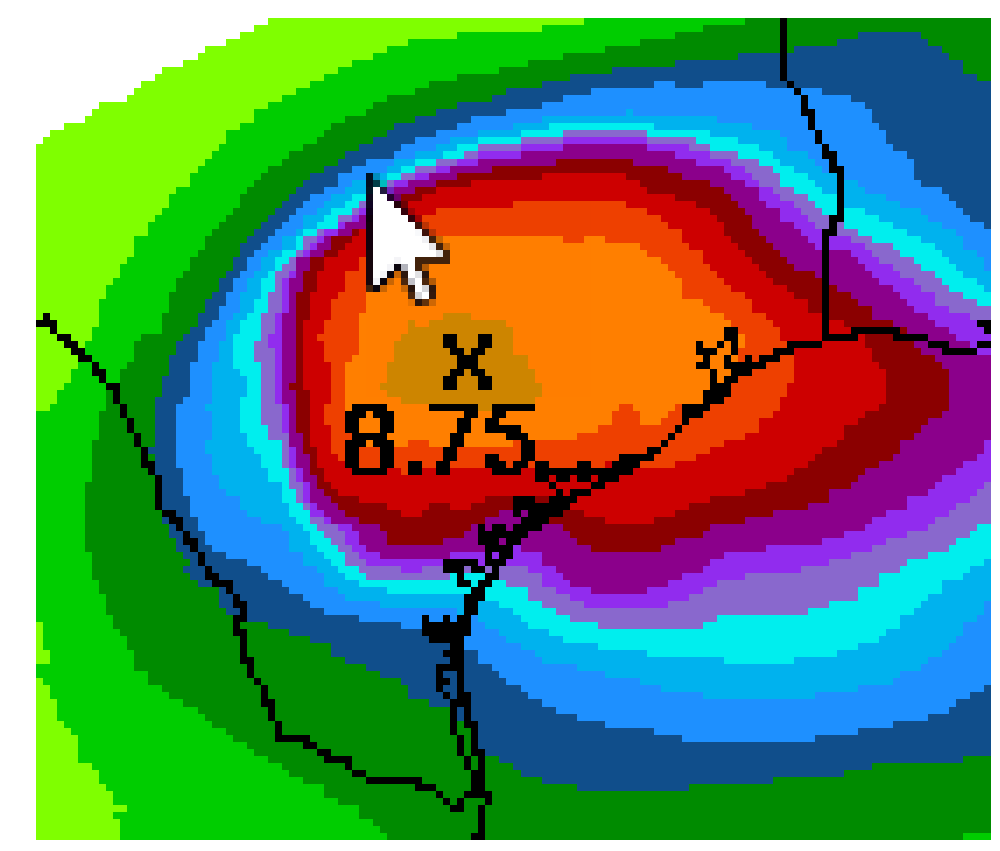
Friday



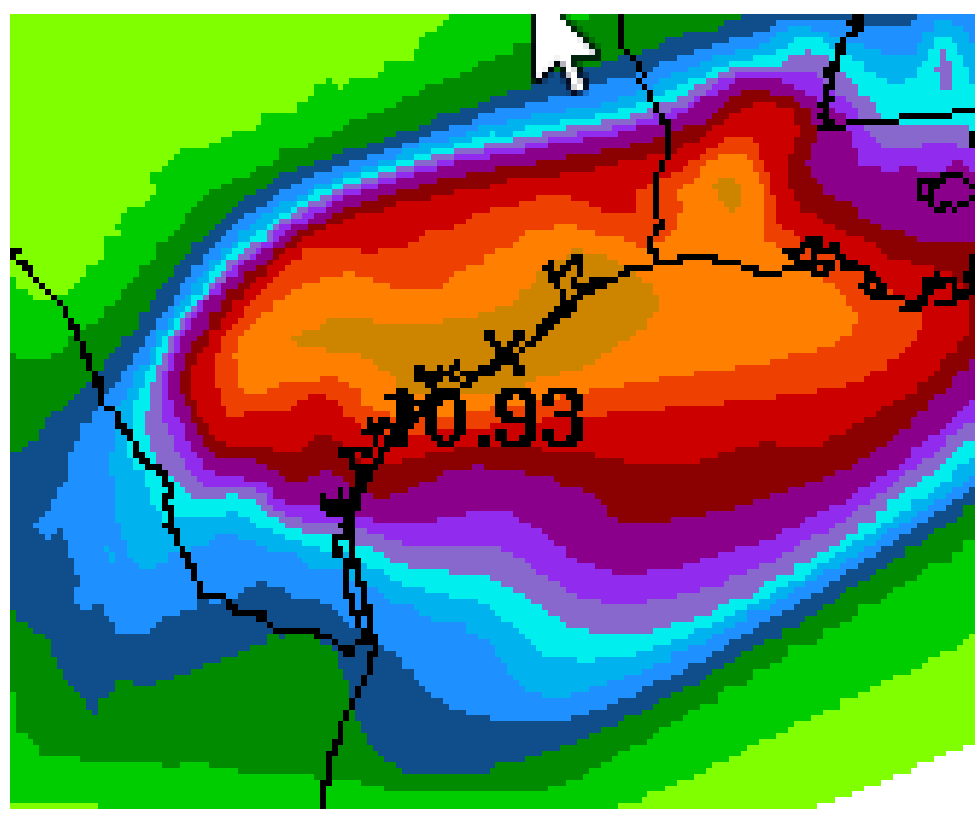
Saturday



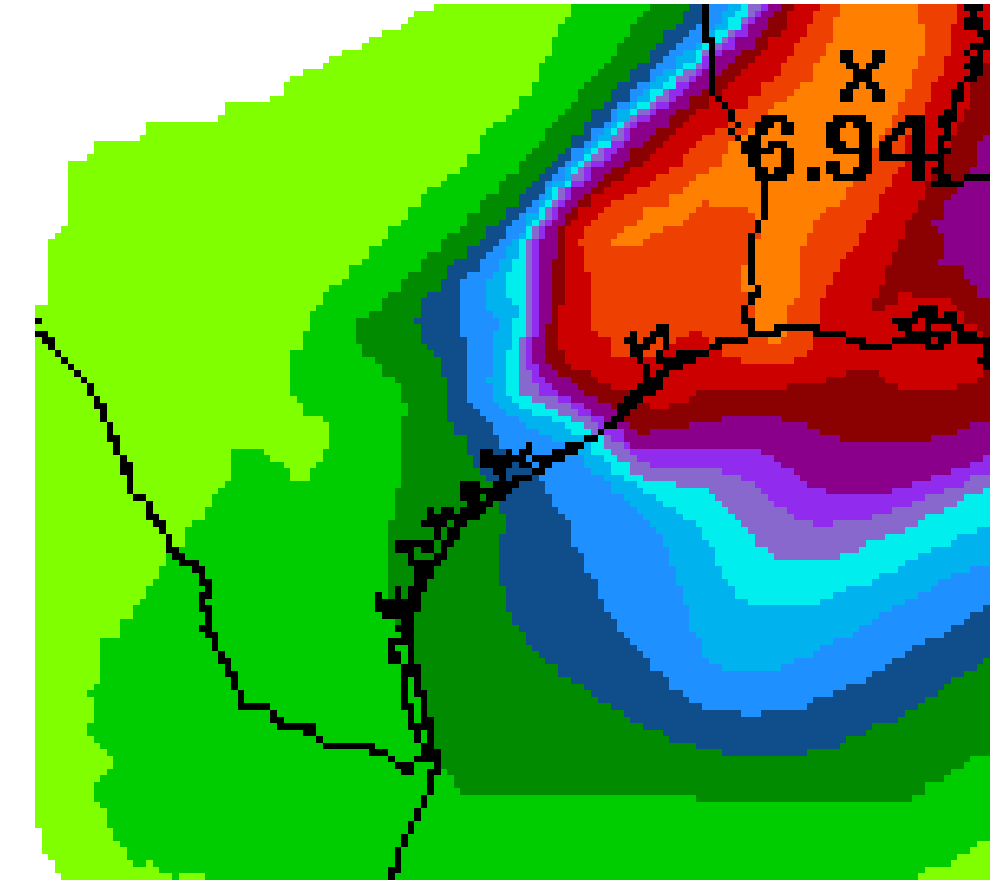
Sunday



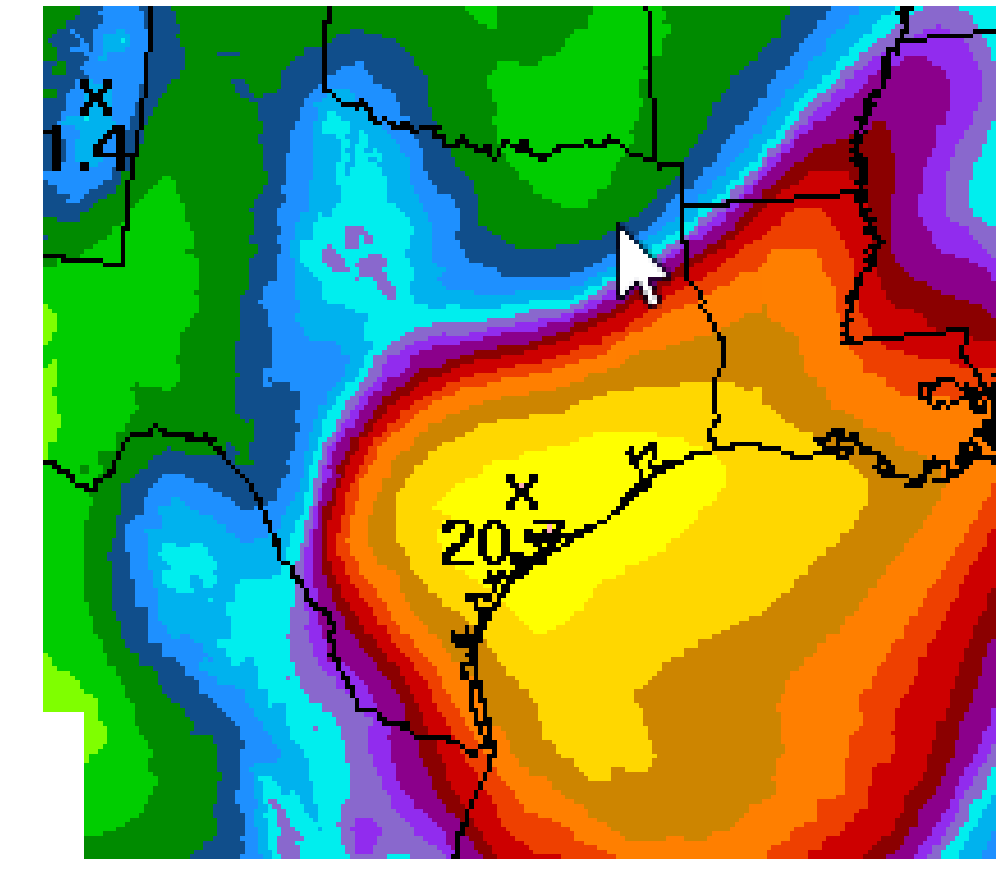
Monday & Tuesday



Wednesday & Thursday



Event Total



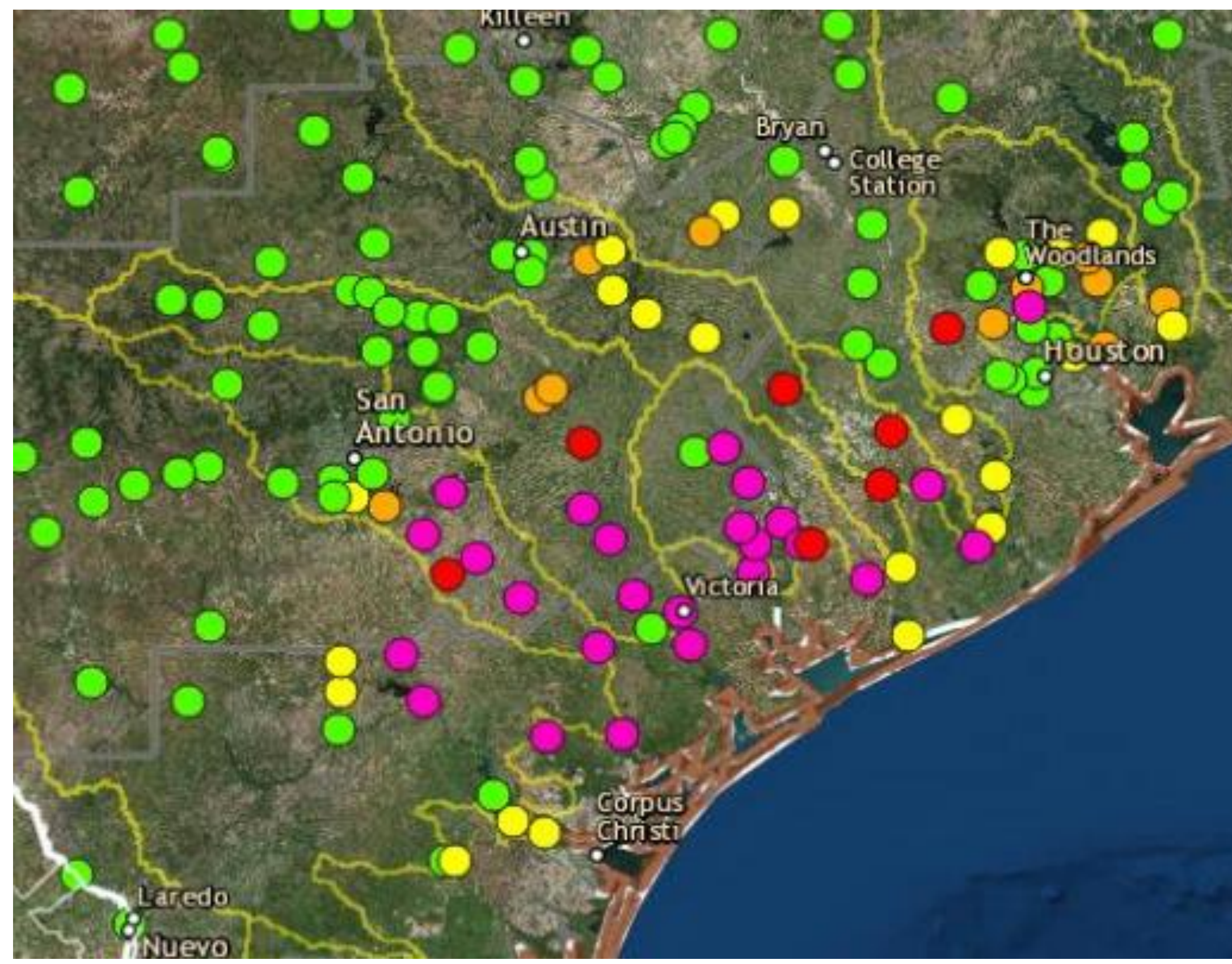
River Flooding Likely



Corpus Christi
WEATHER FORECAST OFFICE

Hurricane Harvey

- Widespread **Major** and **Record** flooding expected across San Antonio, Lavaca, Navidad and Guadalupe Rivers



7 Day Model River Forecast

- In Banks
- Action
- Minor
- Moderate
- Major

Initial River Flood Projections based on Forecast Rainfall



- Hurricane Harvey is heading toward the Texas coast. Maximum sustained winds currently 85 mph.
- We are expecting a major hurricane with max winds 125 mph at landfall somewhere between Port Aransas and Port O'Connor!
- Life-threatening Storm Surge inundation expected along mid coast of 6 to 12 feet above ground level.
- Rainfall Totals 15-25" with isolated 35" maximum. Life-threatening, devastating, record flooding Expected!
- Isolated tornadoes beginning Friday morning



- We strongly advise local citizens listen to your local elected officials and heed their recommendations!
- Preparations should be rushed to completion. Plan for devastating to catastrophic wind impacts.
- Structural damage to sturdy buildings, some with complete roof and wall failure are possible.
- If you are in a storm surge warning area, you need to Heed evacuation orders!



HURRICANE HARVEY BRIEFING

*The Next Full Briefing Update Will Be:
Tonight at 11PM CDT*

You can get the latest graphics and information on this storm at www.hurricanes.gov



NWSCorpus

www.weather.gov/CorpusChristi