



HURRICANE HARVEY BRIEFING

11 PM CDT
Thursday, August 24, 2017

Prepared by:
Lara Beal





- No changes to hurricane or storm surge warnings.
- Hurricane Harvey continues towards the Texas coast. Maximum sustained winds currently 85 mph.
- Hurricane Harvey is continued to be forecast to make landfall in under 36 hours along the middle Texas coast as a major hurricane (category 3)
- Earliest onset of tropical storm force winds to begin Friday morning, with hurricane force winds as early as Friday afternoon.



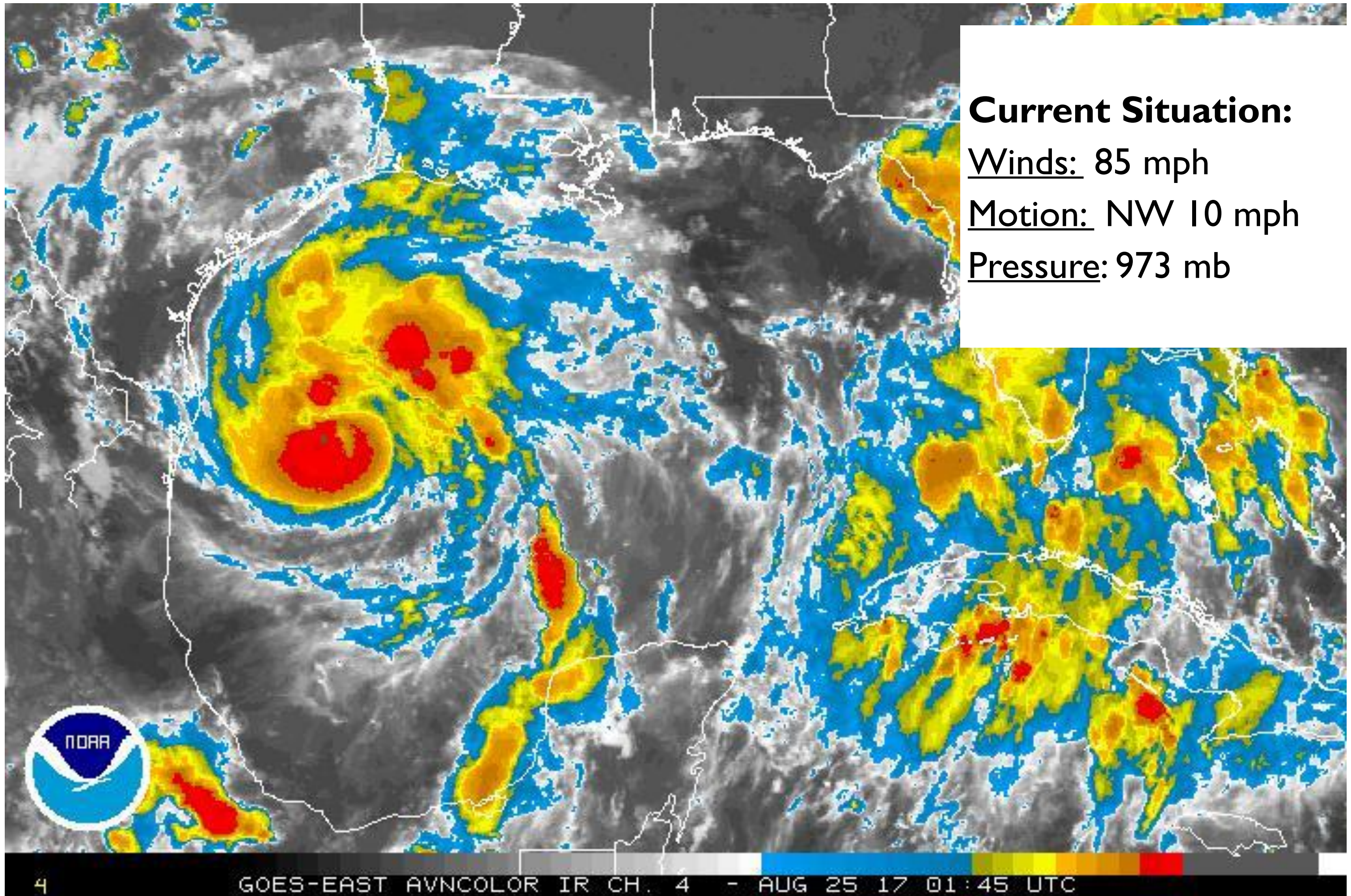
- Life-threatening storm surge inundation expected along mid coast of 6 to 12 feet above ground level.
- Rainfall totals 15-25” with isolated 35” maximum.
Life-threatening, devastating, record flooding expected!
- Isolated tornadoes beginning Friday morning.
- Hurricane Warning is in effect from Port Mansfield to Sargent
- Storm Surge Warning is in effect from Port Mansfield to High Island
- Flash Flood Watch is in effect for most of South TX

Current Satellite View



Corpus Christi
WEATHER FORECAST OFFICE

Hurricane Harvey



Current Situation:

Winds: 85 mph

Motion: NW 10 mph

Pressure: 973 mb

Current Radar View



Corpus Christi
WEATHER FORECAST OFFICE

Hurricane Harvey



Situation Overview



Corpus Christi
WEATHER FORECAST OFFICE

Hurricane Harvey



- Forecast to reach major hurricane strength with max sustained winds 125 mph near the storm center.
- Impacts felt across all the mid Texas coast and inland portions of South Texas.

NOTE: Do not focus on the exact track. Impacts can occur well outside the area enclosed by the cone.

Hurricane Winds



Corpus Christi
WEATHER FORECAST OFFICE

Hurricane Harvey



5 Day Cumulative probabilities

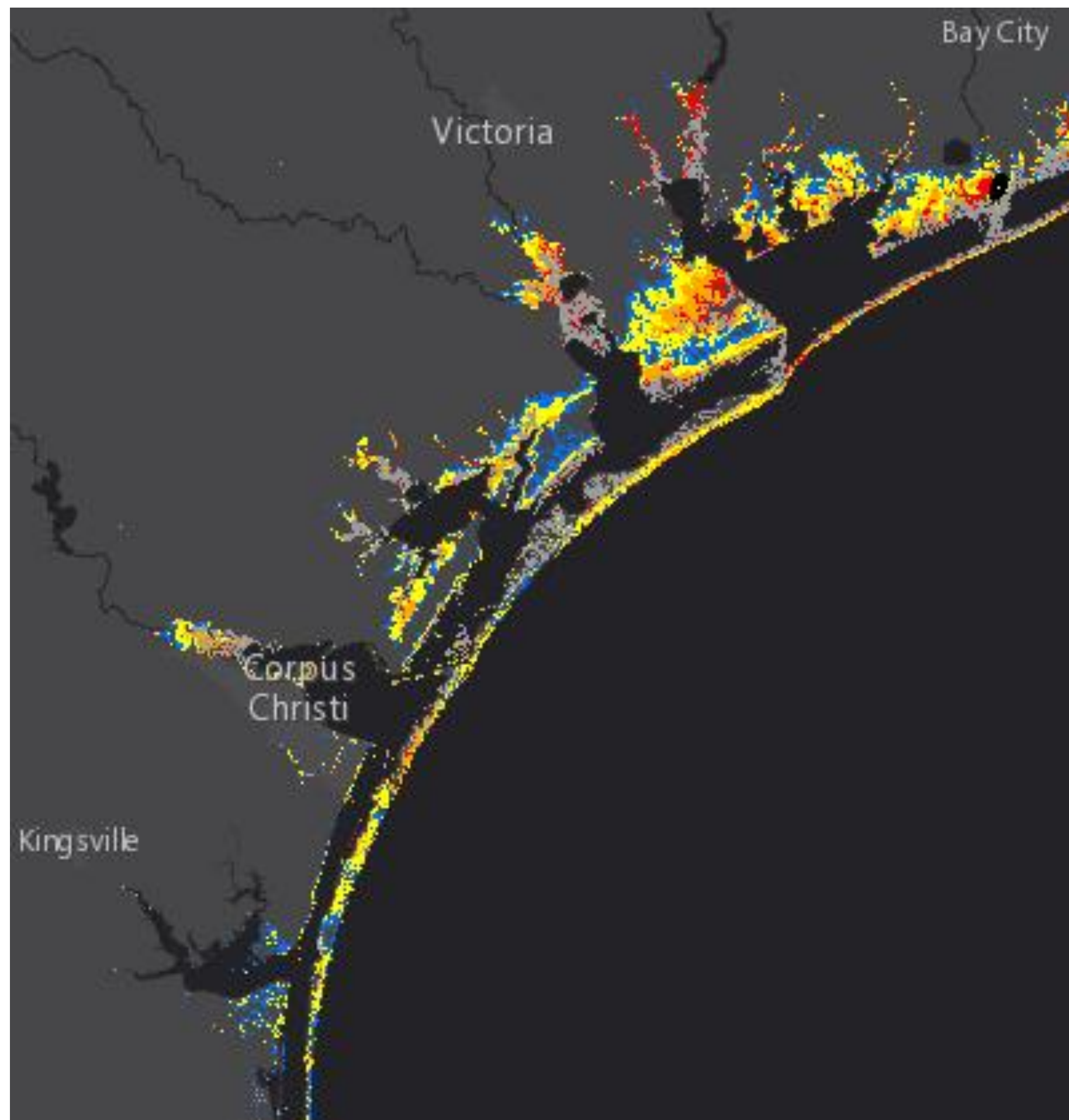
- Trends show increasing probabilities and a focus between Port Aransas and Port O'Connor.
- Onset of hurricane force winds forecast to occur as early as Friday afternoon.

Potential Storm Surge



Corpus Christi
WEATHER FORECAST OFFICE

Hurricane Harvey



Reasonable Worst Case Scenario Map

Areas of greatest risk:

- Plan for peak storm surge flooding of 6-12 feet above ground level from the PINS entrance northward
- Aransas, Calhoun, and coastal Refugio counties will have especially extreme impacts from storm surge

Timing

- Life threatening storm surge inundation will begin as early as Friday morning with peak Friday Night and Saturday.

Storm Surge By County



Corpus Christi
WEATHER FORECAST OFFICE

Potential Tropical Cyclone Harvey

	Onset of Storm Surge	Peak Surge Forecast:
Nueces	Friday Morning	4 to 7 feet AGL
San Patricio	Friday Morning	4 to 7 feet AGL
Aransas	Friday Morning	4 to 8 feet AGL
Refugio	Friday Evening	7 to 10 feet AGL
Calhoun	Friday Morning	8 to 12 feet AGL

Expected Storm Total Rainfall

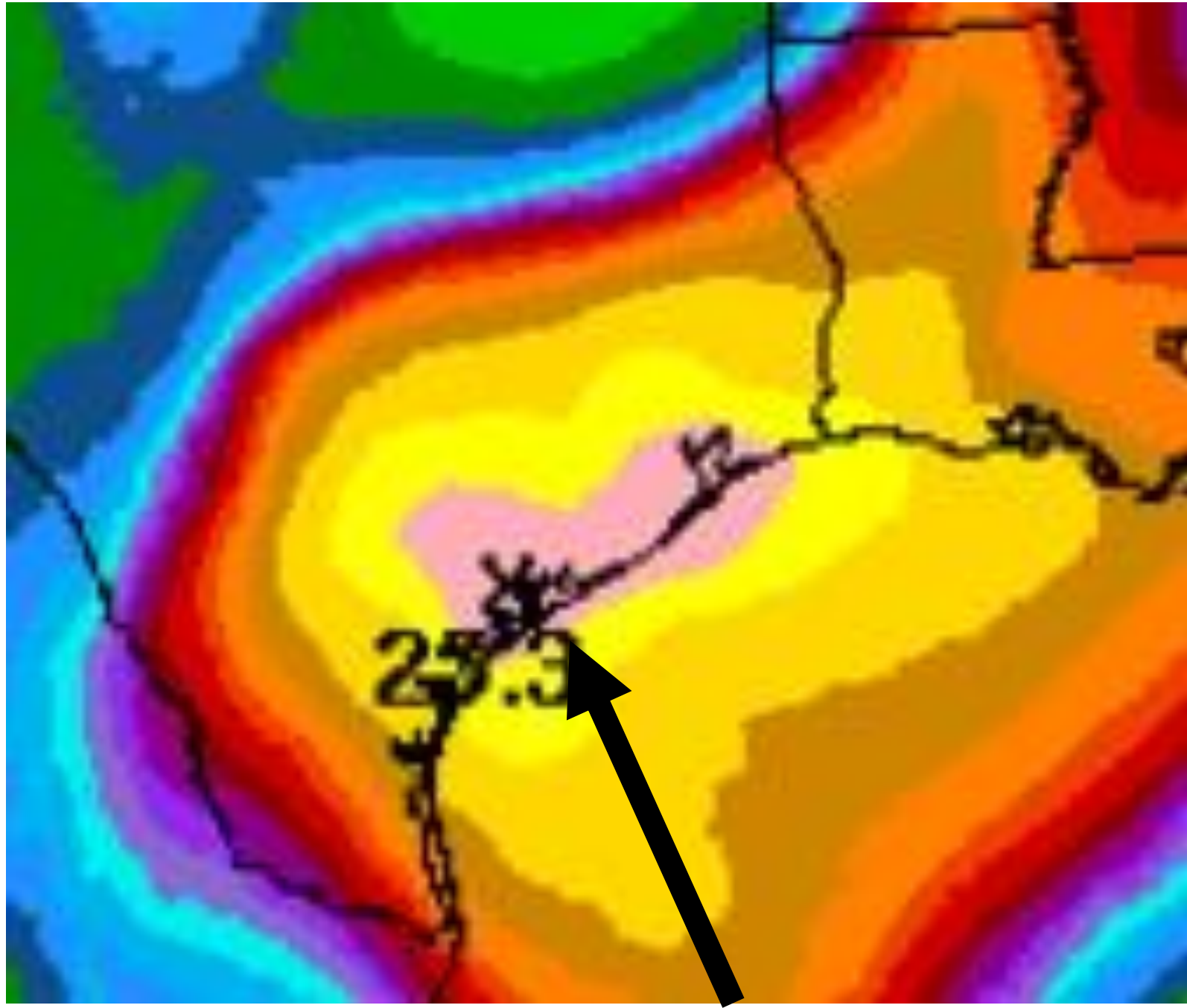


Corpus Christi
WEATHER FORECAST OFFICE

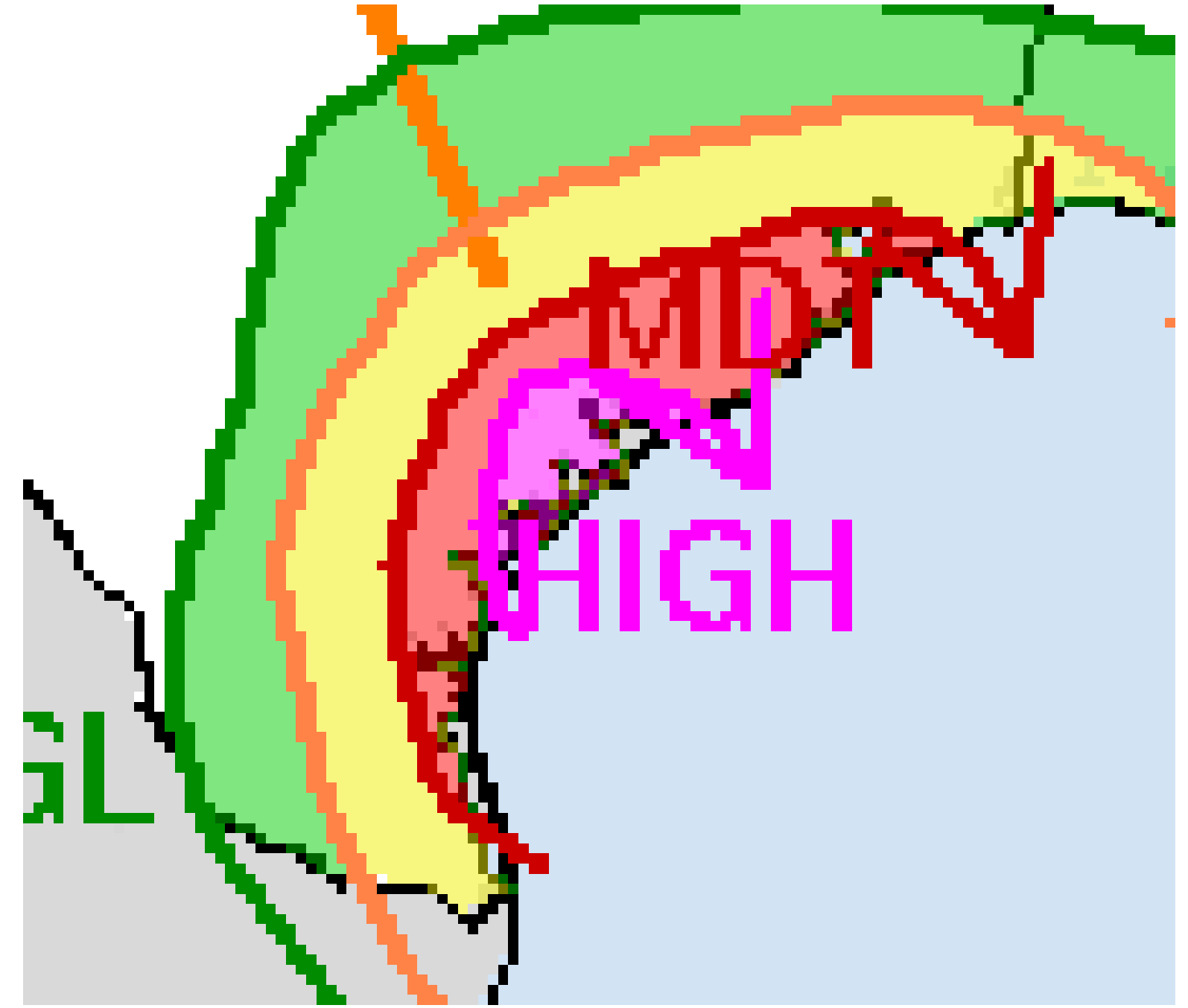
Hurricane Harvey

Life-threatening, devastating, record flooding expected!

Storm total rainfall



Excessive Rainfall Forecast



Maximum Storm Total Rainfall amounts of 15-25" isolated amounts of 35" or more expected along the Mid Texas Coast (lesser amounts west of I-37)

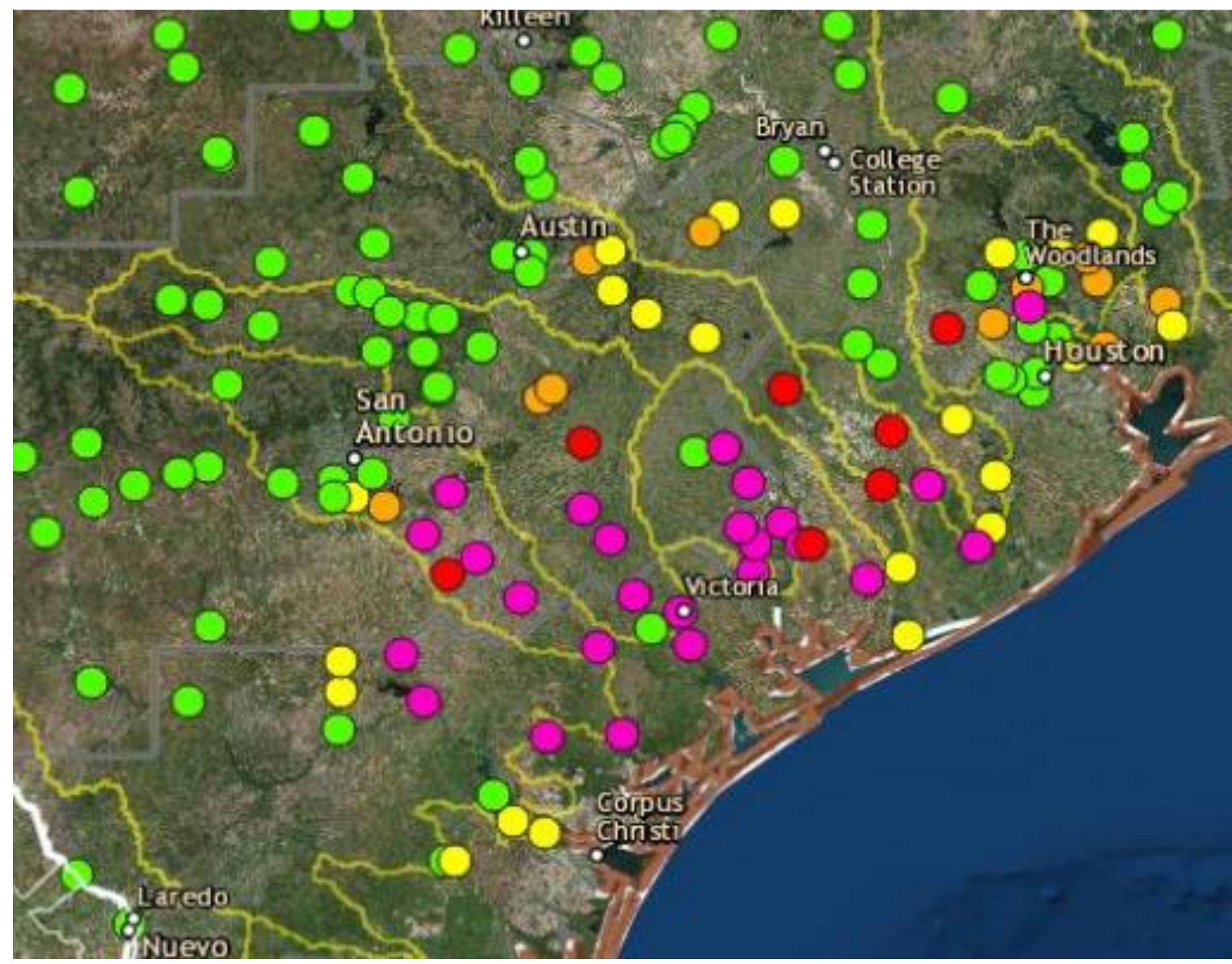
River Flooding Likely



Corpus Christi
WEATHER FORECAST OFFICE

Hurricane Harvey

- Widespread **Major** and **Record** flooding expected across San Antonio, Lavaca, Navidad and Guadalupe Rivers



Initial River Flood Projections based on Forecast Rainfall



- Hurricane Harvey is continued to be forecast to make landfall in under 36 hours along the middle Texas coast as a major hurricane (category 3)
- Earliest onset of tropical storm force winds to begin Friday morning, with hurricane force winds as early as Friday afternoon.



- Life-threatening storm surge inundation expected along mid coast of 6 to 12 feet above ground level.
- Rainfall totals 15-25” with isolated 35” maximum.
Life-threatening, devastating, record flooding expected!
- Isolated tornadoes beginning Friday morning.
- Hurricane Warning is in effect from Port Mansfield to Sargent
- Storm Surge Warning is in effect from Port Mansfield to High Island
- Flash Flood Watch is in effect for most of South TX



- We strongly advise local citizens to listen to your local elected officials and heed their recommendations!
- Preparations should be rushed to completion if they are not already done. Plan for devastating to catastrophic wind impacts.
- Structural damage to sturdy buildings, some with complete roof and wall failure are possible.
- If you are in a storm surge warning area, you need to heed evacuation orders!



HURRICANE HARVEY BRIEFING

Please contact NWS Corpus Christi at
361-289-0959 or 888-579-9731
or through the “CRPchat” NWSChatroom

*The Next Slide Briefing Update Will Be:
Friday at 4 AM CDT*

You can get the latest graphics and information on this storm at www.hurricanes.gov



NWSCorpus

www.weather.gov/CorpusChristi